



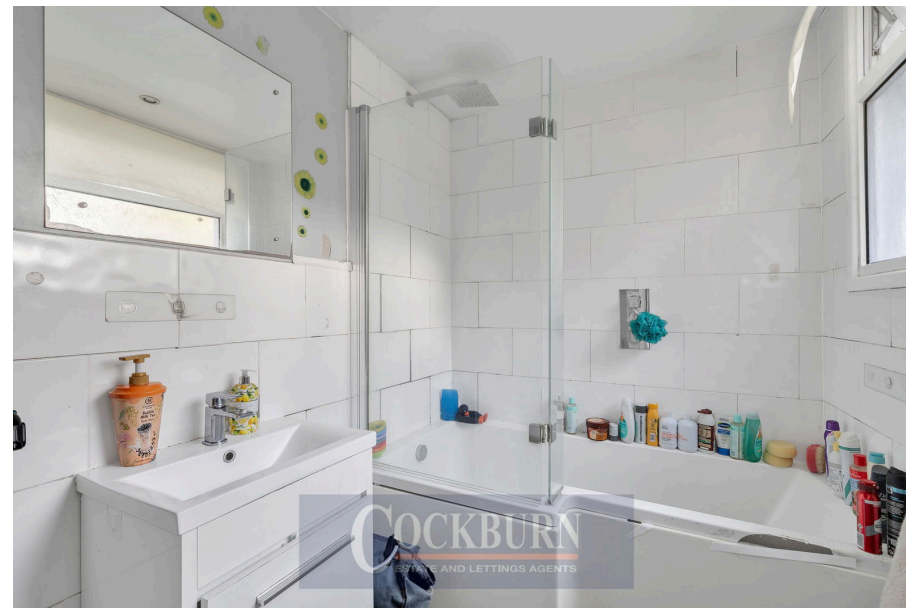
Framlingham Crescent, Mottingham, SE9

Guide Price £375,000

3 1 1



- Council Tax Band C - London Borough Of Bromley
- End Of Terrace
- Quiet Residential Area
- In Need Of Modernisation
- Freehold
- Three Bedrooms
- Off Road Parking
- Walking Distance To Good Schools
- Large Garden With Summerhouse
- EPC Grade D



**** GUIDE PRICE £375,000 - £400,000 ****

**** OPEN DAY 23RD NOVEMBER BY APPOINTMENT ONLY ****

Situated on a quiet residential street, close to good schools and amenities, this end of terrace family home, in need of modernisation, must be viewed to be fully appreciated.



Framingham Crescent, SE9
Approximate Gross Internal Area = 754 sq ft / 70.1 sq m



This plan is for layout guidance only and not drawn to scale unless stated. Window and door openings are approximate. Whilst every care is taken in the preparation of this plan, we would advise interested parties to check all dimensions, shapes and compass bearings prior to viewing any locations related to them. By Homeoutlook.co.uk / Copyright 2024

Energy Efficiency Rating		
	Current	Potential
Very energy efficient - lower running costs		
(92 plus) A		
(81-91) B		
(69-80) C		75
(55-68) D	59	
(39-54) E		
(21-38) F		
(1-20) G		
Not energy efficient - higher running costs		
England & Wales	EU Directive 2002/91/EC	

Cockburn EA
352 Footscray Road,
London, SE9 2EB
t: 020 8859 8590