



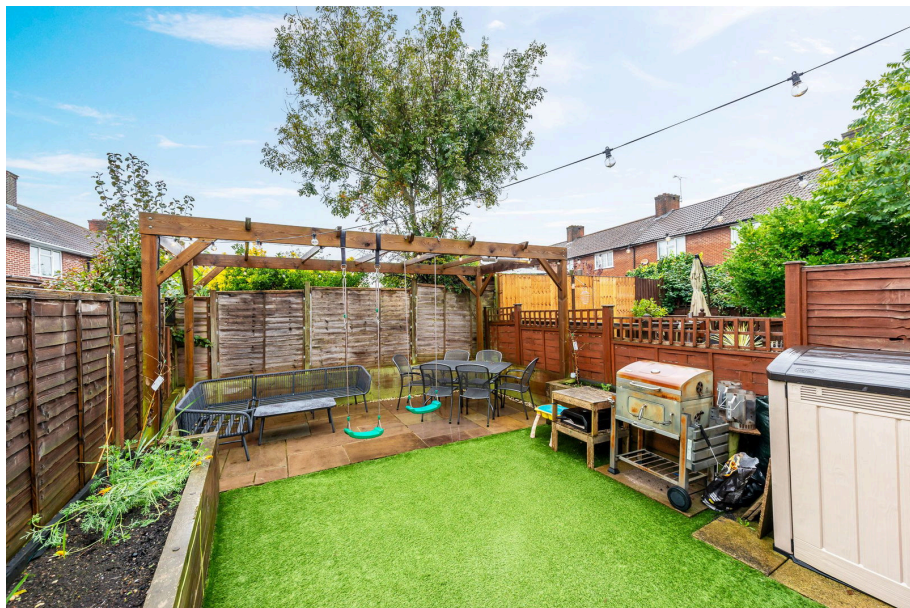
# Widcombe Road, Mottingham, SE9

Guide Price £400,000

🛏️ 3 🚗 1 🚲 1

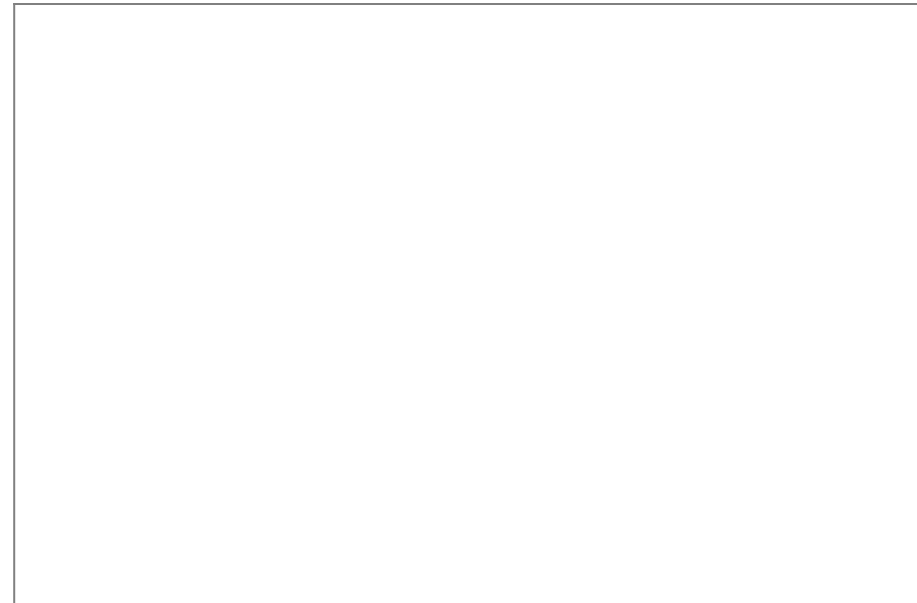


- Three Bedroom Terraced Home
- Well Kept Rear Garden
- Extended Conservatory
- Off Street Parking
- Close To Schools & Shops
- Ideal For Growing Families
- Excellent Transport Links Nearby
- Perfect For First Time Buyers
- Council Tax Band C - London Borough Of Bromley



**\*\*\* GUIDE PRICE £400,000 - £425,000 \*\*\***

*Cockburn are excited to present to the market this wonderful three bedroom terrace house in the heart of Mottingham*



**Cockburn EA**

352 Footscray Road,  
London, SE9 2EB

t: **020 8859 8590**