



Beaconsfield Road, London, SE9

£240,000

🛏️ 2 🍽️ 1 🚗 1



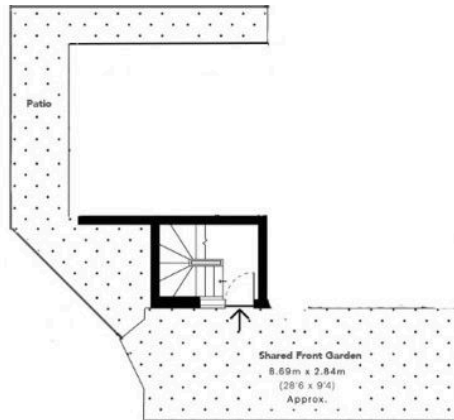
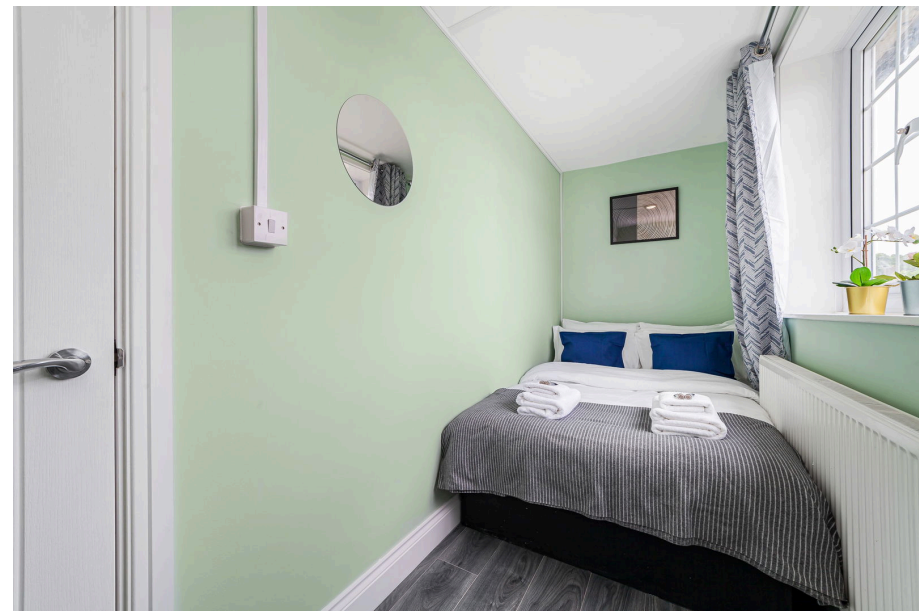
- Chain Free Sale
- Share Of Freehold
- Walking Distance Of Local Shops & Amenities
- Fitted Kitchen
- Council Tax Band B - London Borough Of Bromley
- Two Bedroom First Floor Flat
- Shared Garden
- Within Easy Reach Of Mottingham Railway Station
- Turn-Key Condition



***** SHARE OF FREEHOLD *****

Presented in turn-key condition is this wonderful two bedroom first floor flat located in the heart of Mottingham. Boasting two bedrooms, reception area, large kitchen and modern bathroom, the property would be ideal for first time buyers or buy to let investors alike. In terms of location, the property is ideally set within easy reach of local shops, amenities and leisure facilities, as well as being within easy reach of Mottingham railway station with its regular trains into the city & beyond, making the property ideal for those needing to commute.

***** Share of Freehold - 999 Years *****



Energy Efficiency Rating		Current	Potential
Very energy efficient - lower running costs			
(92 plus)	A		
(81-91)	B		
(69-80)	C	79	79
(55-68)	D		
(39-54)	E		
(21-38)	F		
(1-20)	G		
Not energy efficient - higher running costs			
England & Wales		EU Directive 2002/91/EC	