



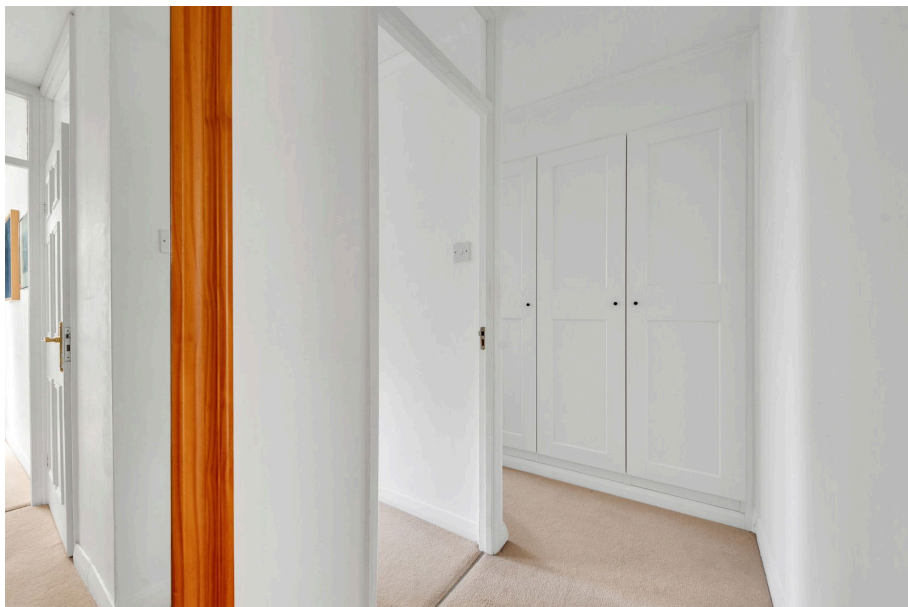
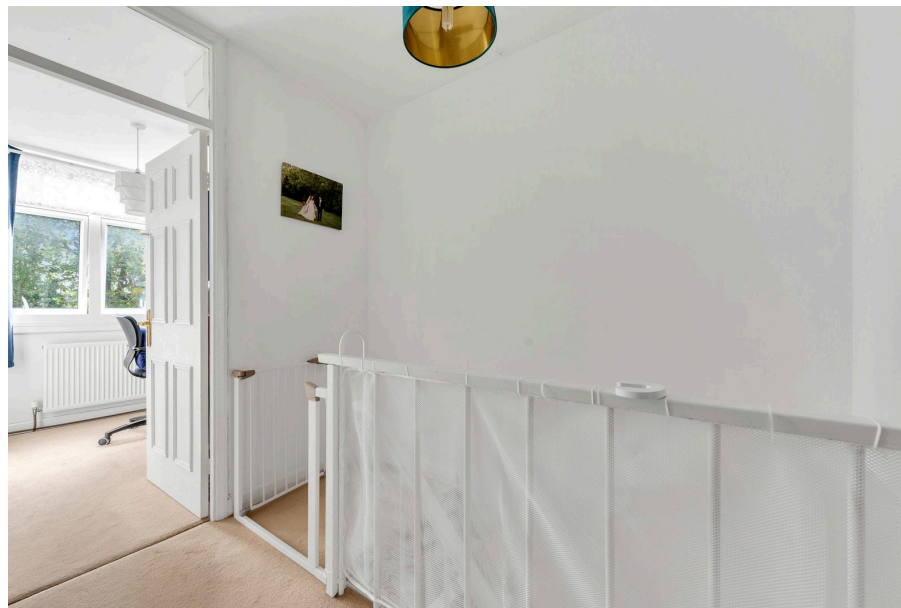
# Tarnwood Park, Eltham SE9 - 3 Beds - 900 Sq Ft!

Offers Over £400,000

🛏 3 🚿 1 🚗 1

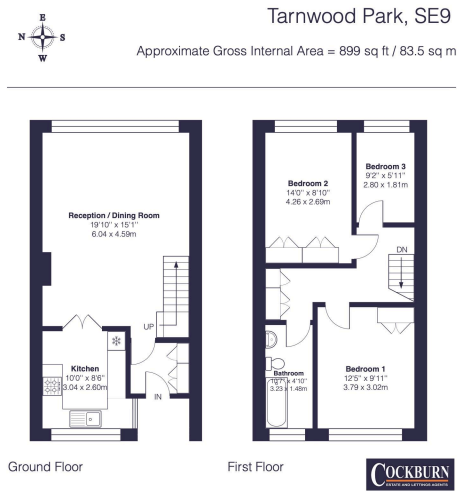


- Three Bedroom Maisonette
- Private Residential Estate
- Long Lease Length
- Backing Onto Prestigious Royal Blackheath Golf Course
- Walking Distance Of Eltham High Street Shops, Amenities & Leisure Facilities
- Within Easy Reach Of Both Mottingham & Eltham Railway Stations
- Excellent Bus Links Keeping You Connected With Eltham, Greenwich & Bromley
- Superb Schools & Nurseries In Local Catchment Area
- Council Tax Band C - Royal Borough Of Greenwich

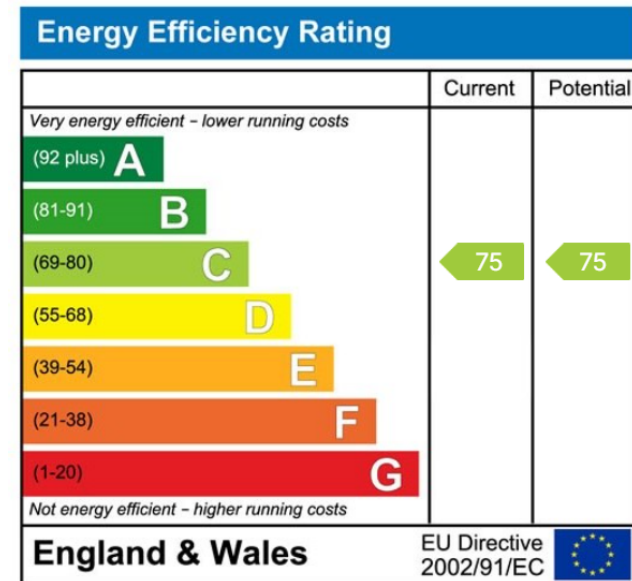


Stunning 3-bedroom property (900 Sq ft Approx.). Ground and First Floor with large reception room & views to the rear of the prestigious Blackheath Golf Club.

Lease Length 964 Years | Service Charge £1,600.00 Per Annum - Ground Rent Inclusive (approx.)



This plan is for layout guidance only and not drawn to scale unless stated. Window and door openings are approximate. Whilst every care is taken in the preparation of this plan, we would advise interested parties to check all dimensions, shapes and compass bearings prior to making any decisions reliant upon them.  
By Homeoutlook.co.uk / Copyright 2020



**Cockburn EA**

352 Footscray Road,  
London, SE9 2EB

t: 020 8859 8590