



COCKBURN
ESTATE AND LETTINGS AGENTS

cockburn-online.co.uk

Paxton Court, Marvels Lane, SE12

£200,000

🛏️ 2 🚿 1 🚗 1

- Chain Free Sale
- Two Bedrooms
- Allocated Parking
- 24 Hour Careline System
- Excellent Transport Links Nearby
- Ground Floor Retirement Flat - Over 60's Only
- Communal Gardens
- Quiet Residential Block
- Close To All Local Amenities
- Council Tax Band D - London Borough Of Lewisham



Chain Free!

Cockburn are excited to present to the market this two bedroom, ground floor retirement flat, available to those aged 60 years +. The property consists of large reception/dining room with direct access into the communal garden, kitchen, two well proportioned bedrooms and modern bathroom with walk-in shower. Please note although the property is located on the ground floor, it is in a slightly elevated position within the complex.

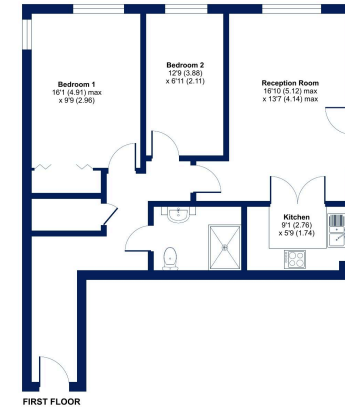
Lease Length 99 Years | Service Charge £1,908 Every 6 Months | Ground Rent £377 Every 6 Months (approx)



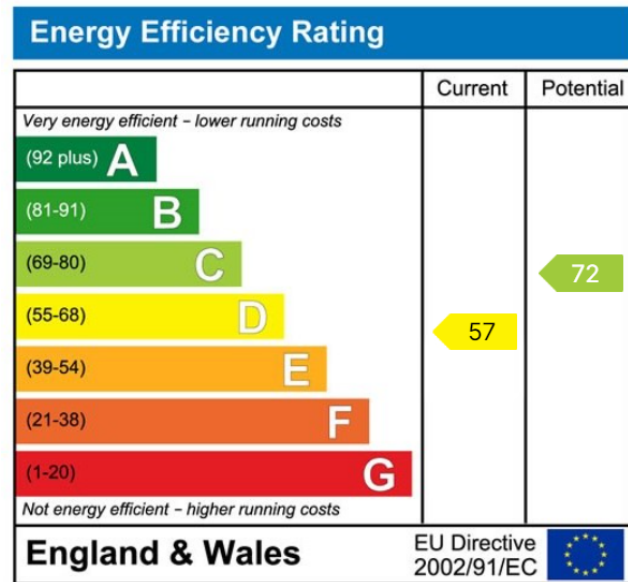


Paxton Court, Marvels Lane, London, SE12

Approximate Area = 691 sq ft / 64.1 sq m
For information only - Not to scale



Energy Performance Certificate (EPC) for Paxton Court, Marvels Lane, London, SE12. This plan is intended to be used in accordance with the RICS (Property Measurement Standards) incorporating International Property Measurement Standards (IPMS) (Residential). © 2024 Cockburn EA. Produced by Cockburn Estates Agents. 020 8859 8590



Cockburn EA

352 Footscray Road,
London, SE9 2EB

t: 020 8859 8590