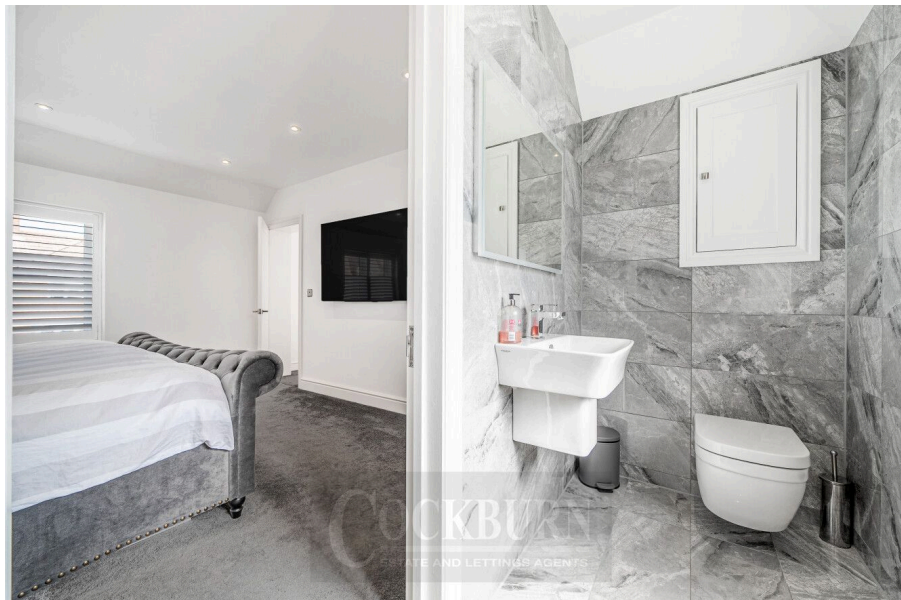




Widcombe Road, Mottingham, SE9

Guide Price £650,000

🛏️ 4 🚿 2 🚗 1



- Four Bedroom Family Home
- Finished To High Standard Throughout
- Generous Open-Plan Living/ Kitchen/Dining area
- Off Street Parking for Multiple Cars
- Private Rear Garden
- Within Easy Reach Of Local Amenities
- Ideal For Growing Families
- Excellent Transport Links Nearby
- Close to Highly Regarded Schools
- Council Tax Band C - London Borough Of Bromley



***** GUIDE PRICE £650,000 - £675,000 *****

Welcome to this extremely spacious and beautifully extended 4-bedroom, 2-bathroom property located in the desirable area of Mottingham, London SE9. Boasting 1,500 sq. ft. of living space, this stunning home has been refurbished to a very high standard throughout and offers a perfect blend of modern luxury and practical family living.

