

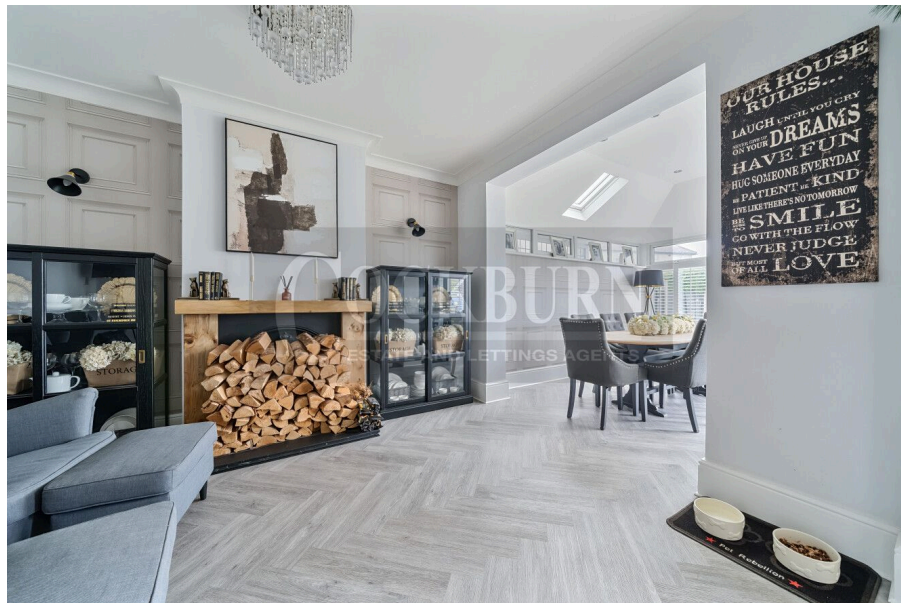


Castleford Avenue, New Eltham, SE9

Guide Price £700,000

🛏 3 🚗 2 🛋 4

- Stunning Three Bedroom House
- Generous Garden To Rear
- Summer House Perfect For Entertaining
- Within Easy Reach Of New Eltham Village Shops, Eateries & Amenities
- Excellent Bus Links Keeping You Connected With Eltham, Chislehurst & Sidcup
- Four Reception Rooms
- Off Street Parking For Numerous Vehicles
- Walking Distance To New Eltham Mainline Station
- Catchment Area For Highly Regarded Schools & Nurseries
- Council Tax Band E - Royal Borough Of Greenwich



***** GUIDE PRICE £700,000 - £750,000 *****

Stunning Family Home at Castleford Avenue, London, SE9

Welcome to Castleford Avenue, a truly stunning three-bedroom house located in the desirable area of New Eltham. This beautifully finished home offers ample space, modern amenities, and an ideal location for families looking to settle in a vibrant and convenient neighbourhood.

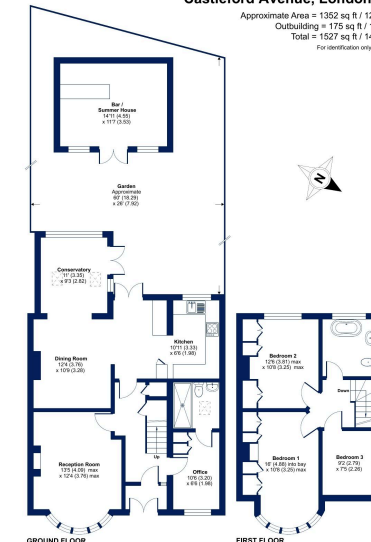
Enjoy versatile living with four separate reception rooms, including a spacious extended conservatory. With an increasing number of people working from home, the dedicated office space is a valuable addition, providing a quiet and productive environment.



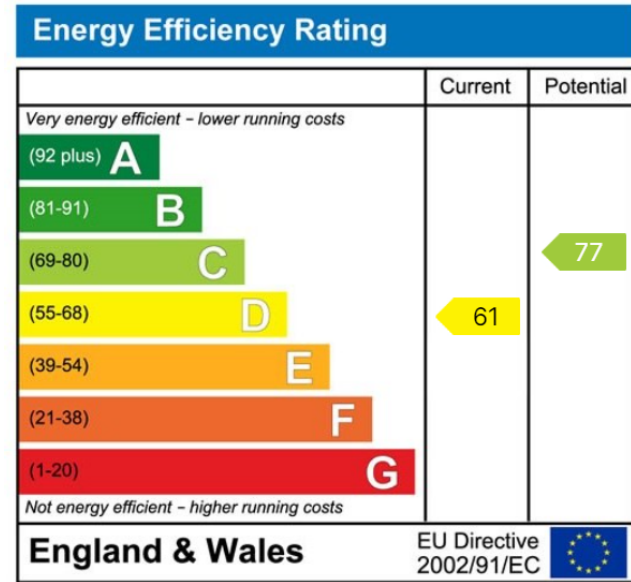
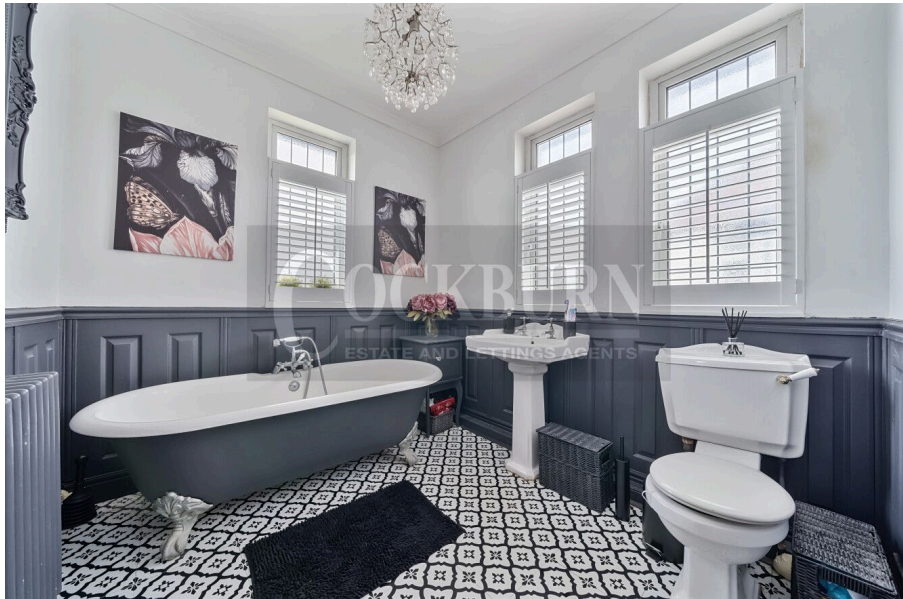


Castleford Avenue, London, SE9

Approximate Area = 1352 sq ft / 125.6 sq m
 Outbuilding = 175 sq ft / 16.2 sq m
 Total = 1527 sq ft / 141.8 sq m
 For identification only - Not to scale



GROUND FLOOR
FIRST FLOOR



Cockburn EA
 352 Footscray Road,
 London, SE9 2EB
 t: 020 8859 8590