



College View, Mottingham, SE9

Guide Price £600,000

🛏️ 4 🚿 2 🚻 1

- Four Bedrooms
- Potential To Extend STPP
- Off Street Parking
- Easy Reach Of Mottingham Railway Station & Bus Links
- Council Tax Band E - London Borough Of Bromley
- Large Through Reception Room
- Large Garden To Rear
- Walking Distance To Mottingham Village Shops & Amenities
- Perfect For Growing Families



***** GUIDE PRICE £600,000 - £625,000 *****

FOUR bedroom semi-detached house is situated in a sought after area in Mottingham village.

This house is offered in good condition, ready to move in.

Boasting ample living space, including extremely spacious through lounge with attractive French doors overlooking garden, FOUR good size bedrooms.

The house benefits from extended kitchen, which provides plenty of space for cooking, dining, relaxing and entertaining guests.

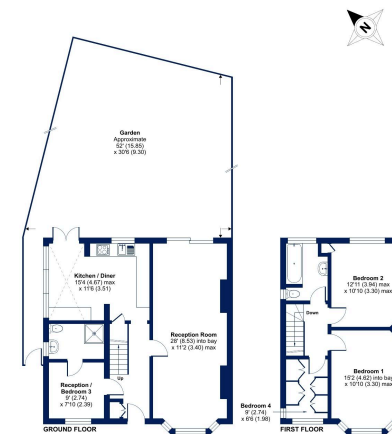
There are two bathrooms: bathroom with WC upstairs and shower room with WC downstairs.



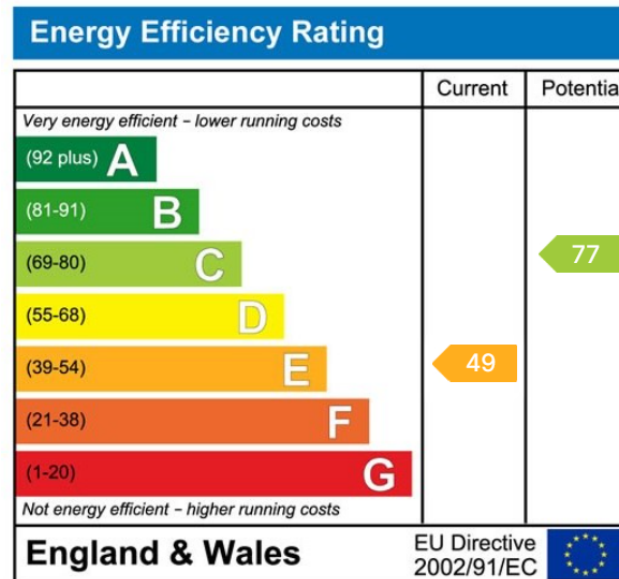


College View, London, SE9

Approximate Area = 1202 sq ft / 111.6 sq m
For information only - Not to scale



Energy Performance Certificate (EPC) for this property was issued on 11/03/2024. The EPC is valid for 10 years. The EPC is based on the information provided by the seller and is not a guarantee of the energy performance of the property. For more information, please contact the seller or the estate agent.



Cockburn EA
352 Footscray Road,
London, SE9 2EB
t: 020 8859 8590