



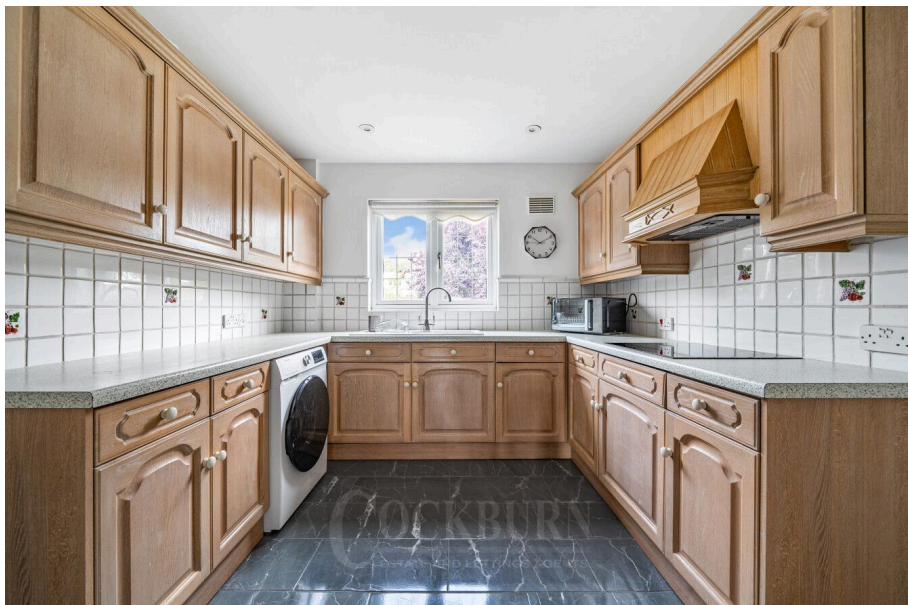
Margaret Gardner Drive, Mottingham, SE9

Guide Price £625,000

🛏️ 4 🚿 1 🚗 2



- Chain Free Sale
- Quiet Cul-De-Sac Location
- Generous Garden To Rear
- Highly Regarded Schools Within Easy Reach
- Walking Distance To Mottingham Railway Station
- Four Bedroom Detached House
- Two Reception Rooms
- Off Street Parking
- Close To Local Shops, Amenities & Green Spaces
- Council Tax Band E - Royal Borough Of Greenwich



Guide Price £625,000 to £650,000 Introducing Margaret Gardner Drive – A Wonderful Four-Bedroom Detached House - CHAIN FREE!

Tucked away in a peaceful cul-de-sac, Margaret Gardner Drive presents an exceptional opportunity to own a spacious and well-appointed four-bedroom detached house in the heart of London. This stunning property offers a perfect blend of comfort, style, and convenience, making it an ideal home for families seeking their forever home!

