



Margaret Gardner Drive, Mottingham, SE9

£700,000

 4  1  2

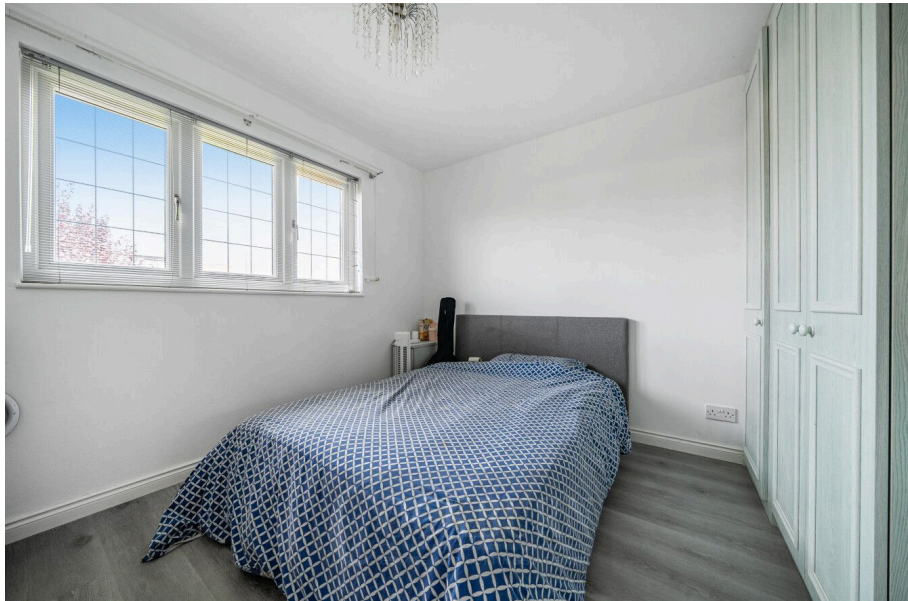
- Chain Free Sale
- Quiet Cul-De-Sac Location
- Generous Garden To Rear
- Highly Regarded Schools Within Easy Reach
- Walking Distance To Mottingham Railway Station
- Four Bedroom Detached House
- Two Reception Rooms
- Off Street Parking
- Close To Local Shops, Amenities & Green Spaces
- Council Tax Band E - Royal Borough Of Greenwich



Introducing Margaret Gardner Drive – A Wonderful Four-Bedroom Detached House - CHAIN FREE!

Tucked away in a peaceful cul-de-sac, Margaret Gardner Drive presents an exceptional opportunity to own a spacious and well-appointed four-bedroom detached house in the heart of London. This stunning property offers a perfect blend of comfort, style, and convenience, making it an ideal home for families seeking their forever home!

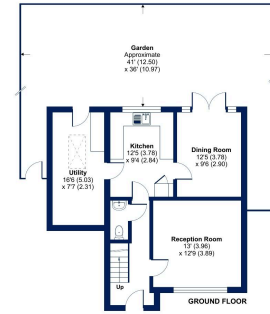
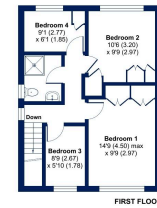
The property proudly boasts two reception rooms, a large kitchen, four well-proportioned bedrooms, family bathroom and downstairs W/C. Step outside to discover a beautifully landscaped garden that offers a serene retreat. The generously sized outdoor space provides opportunities for gardening, play, or simply enjoying the fresh air with family and friends.



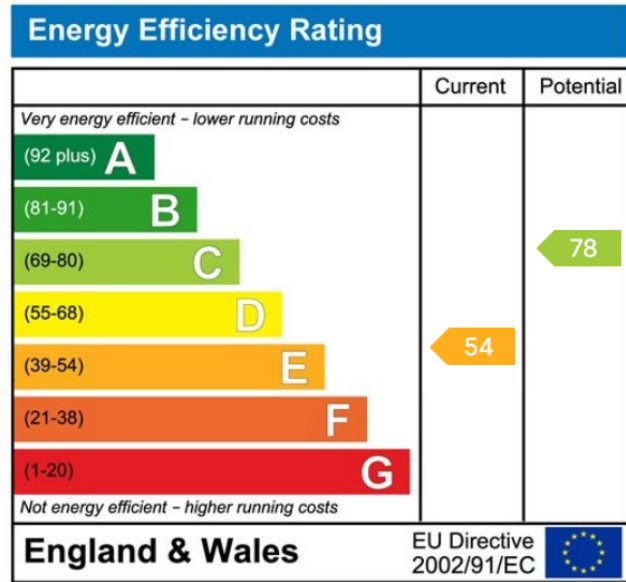


Margaret Gardner Drive, London, SE9

Approximate Area = 1157 sq ft / 107.4 sq m
For information only - Not to scale



These plans are intended for information only. They are not intended to be used for legal purposes. The information is provided for information only. It is not intended to be used for legal purposes. The information is provided for information only. It is not intended to be used for legal purposes.



Cockburn EA
 352 Footscray Road,
 London, SE9 2EB
 t: 020 8859 8590