



FOR SALE
COCKBURN
NOTTINGHAM
020 8857 8857
www.cockburn-online.co.uk

COCKBURN
ESTATE AND LETTINGS AGENTS

cockburn-online.co.uk

Hassop Walk, Mottingham, SE9

Guide Price £400,000

🛏️ 3 🚿 1 🛋️ 1

- Chain Free Sale
- Three Bedrooms
- Ideal For First Time Buyers Or Buy To Let Investors
- Easy Reach Of Grove Park, Mottingham and Elmstead Woods Railway Links
- Well Kept Rear Garden
- Ideally Located For Shops & Amenities
- Close To Parks & Green Spaces
- Perfect For Growing Families
- Catchment Area For Good Schools & Nurseries
- Council Tax Band C - London Borough Of Bromley

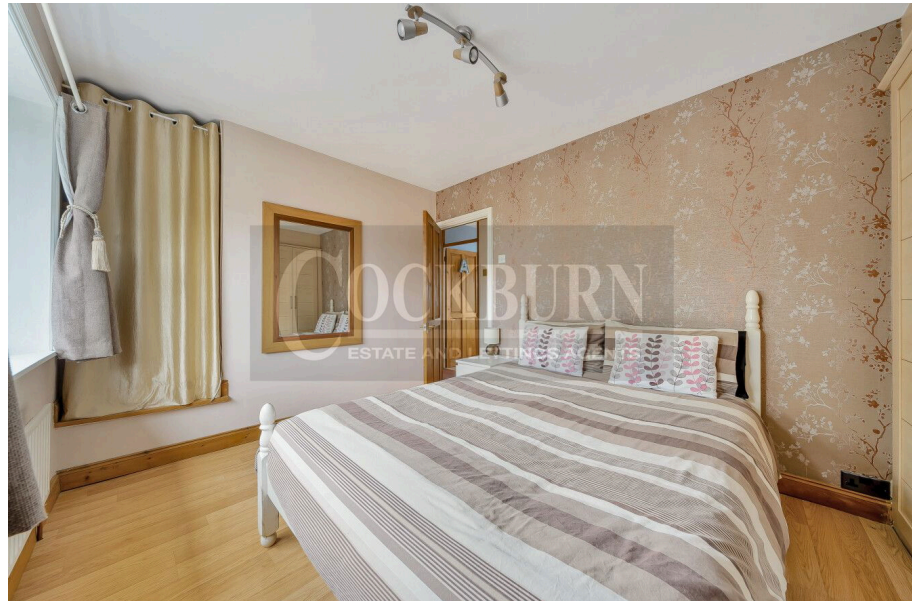


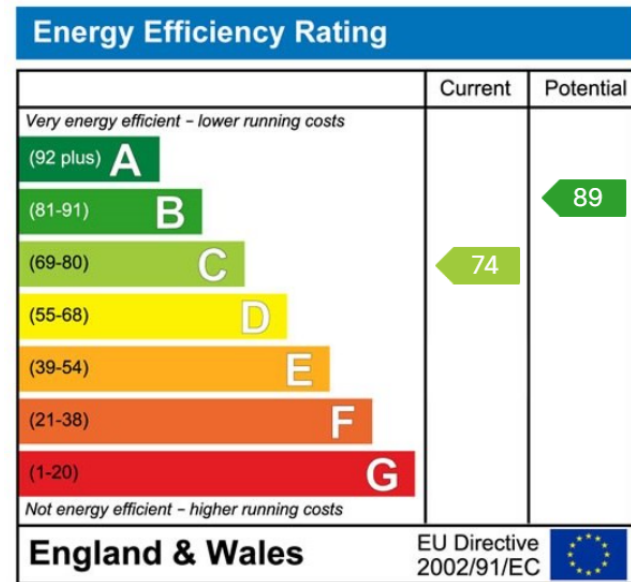
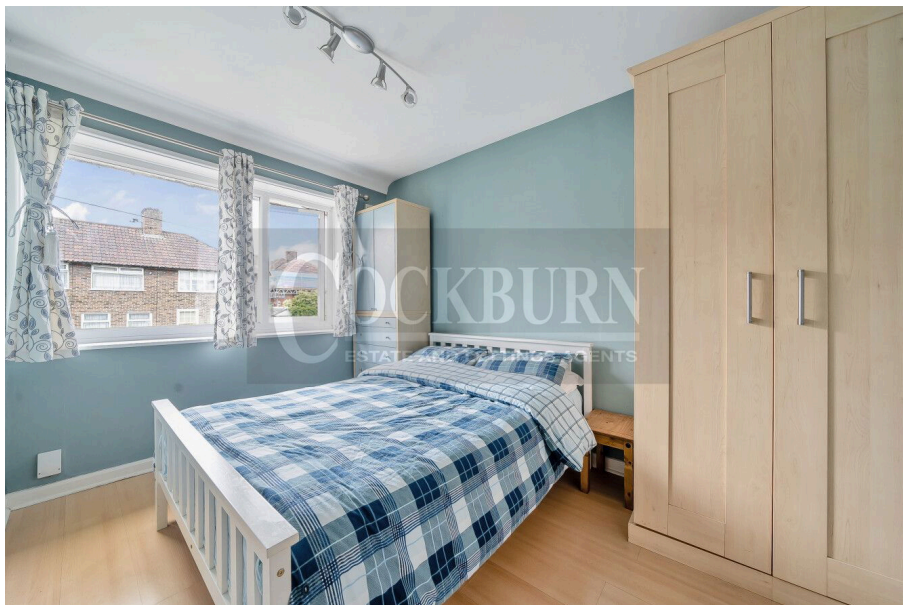
***** CHAIN FREE *** GUIDE PRICE £400,000 - £425,000 *****

Cockburn are excited to present to the market this wonderful example of a three-bed family home on the ever popular Hassop Walk, ideal for first time buyers and buy to let investors alike.

Offering ample space throughout, the property is presented in excellent condition throughout and briefly comprises from three well-proportioned bedrooms, large reception room, fully equipped kitchen, family bathroom and well kept garden to rear. There is also an added bonus of a generously sized loft, providing even more storage space for growing families.

In terms of location, the property is ideally situated within a short distance of green spaces, parks, local shops and amenities. Excellent bus links serve the property, as well as Elmstead Woods, Grove Park & Mottingham Railway Stations





Cockburn EA
 352 Footscray Road,
 London, SE9 2EB
 t: 020 8859 8590