



COCKBURN
ESTATE AND LETTINGS AGENTS

cockburn-online.co.uk

Clayhill Crescent, Mottingham, SE9

£500,000

🛏️ 3 🚿 1 🛋️ 2

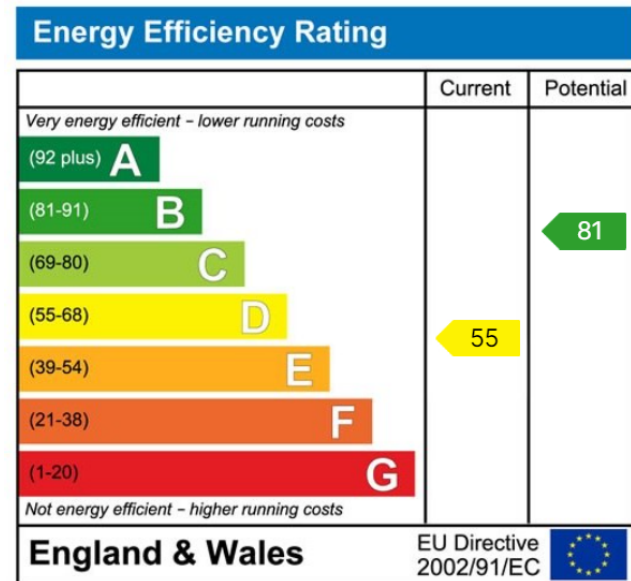
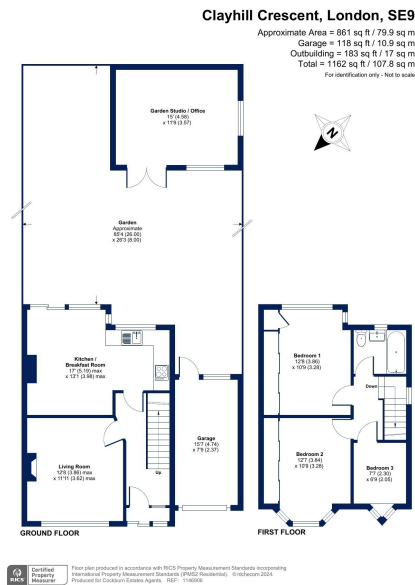


- Chain Free Sale
- Ample Space Throughout
- Off Street Parking & Garage
- Easy Reach Of Grove Park Rail Station
- EPC Rating D - Potential B
- Three Bedrooms
- Generous Garden To Rear With Summer House
- Potential To Extend STGRPC
- Ideal For Growing Families
- Council Tax Band C - London Borough Of Lewisham



*** CHAIN FREE ***

Cockburn are excited to present to the market this wonderful example of a three bed family home, on the ever popular Clayhill Crescent.



Cockburn EA
 352 Footscray Road,
 London, SE9 2EB
 t: 020 8859 8590