



COCKBURN
ESTATE AND LETTINGS AGENTS

FOR SALE
COCKBURN
WITTON CHAM
020 8857 8857
www.cockburn-online.co.uk

COCKBURN
ESTATE AND LETTINGS AGENTS

cockburn-online.co.uk

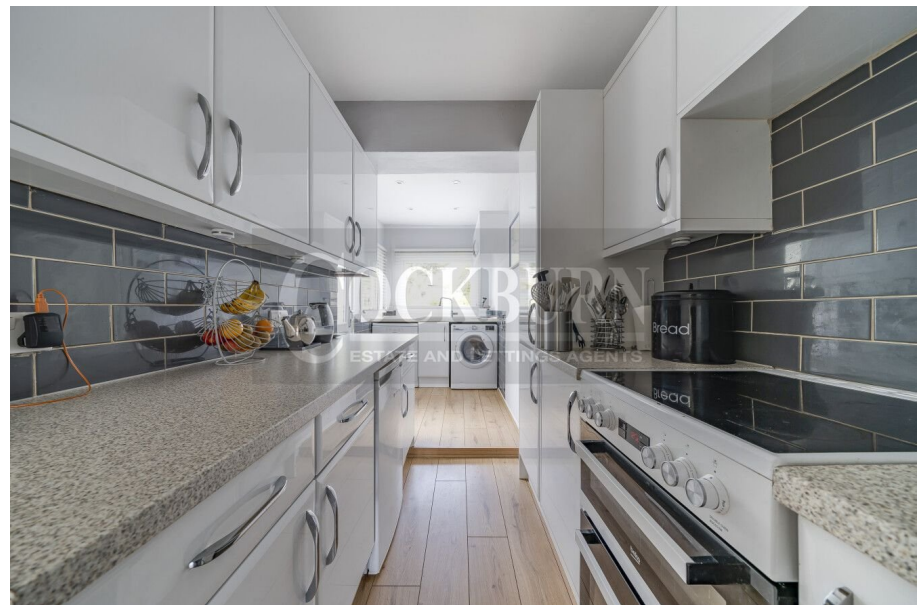
Elibank Road, Eltham, SE9

Offers Over £550,000

🛏️ 4 🍴 2 🛋️ 2

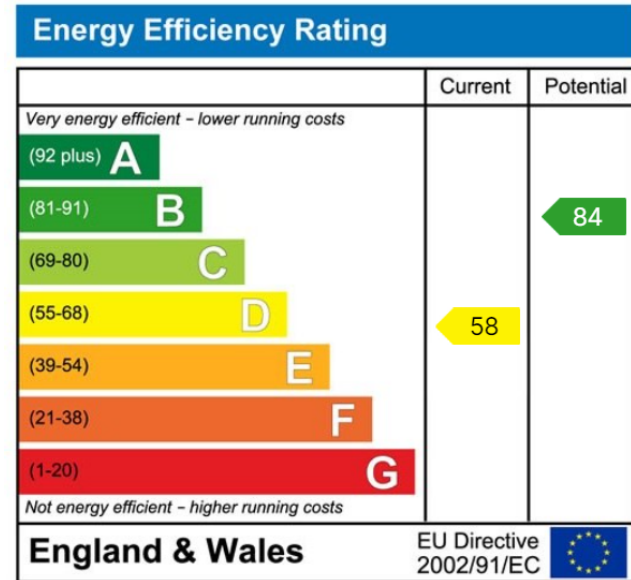
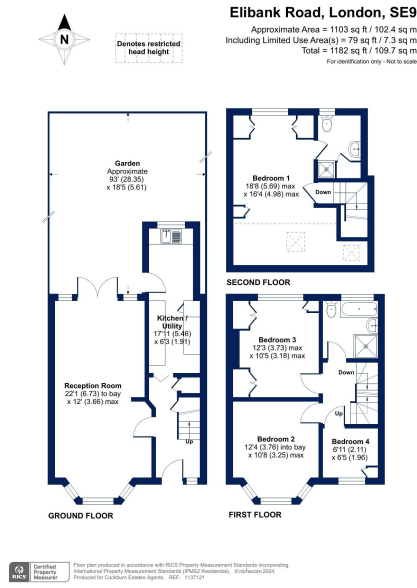


- Complete Onward Chain
- Four Bed Terraced House
- Fourth Bedroom Loft Conversion With En-Suite
- Generous Well Maintained Garden To Rear
- Off Street Parking
- Walking Distance Of Eltham Railway Station
- Within Easy Reach Of Eltham High Street Shops, Eateries & Leisure Facilities
- Ideal First Time Purchase
- Perfect For Growing Families
- Council Tax Band D - Royal Borough Of Greenwich



*** OFFERS OVER £550,000 ***

Located in the vibrant and sought after community of Eltham Park, this delightful four-bedroom terraced family home, with a COMPLETE ONWARD CHAIN offers the perfect blend of contemporary living and classic charm.



Cockburn EA

352 Footscray Road,
London, SE9 2EB

t: 020 8859 8590