



Jevington Way, Lee, SE12

£475,000

3 1 1

- Three Bed Terraced Home
- New Roof Fitted 2018
- Extended Kitchen/Dining Area
- Potential To Extend STPP
- Easy Reach Of Transport Links
- Vibrant Living Room
- Bathroom Refurbished 2019
- Large Garage For Storage, Workshop Or Vehicle Parking
- Ideal For Growing Families
- Council Tax Band D - London Borough Of Lewisham

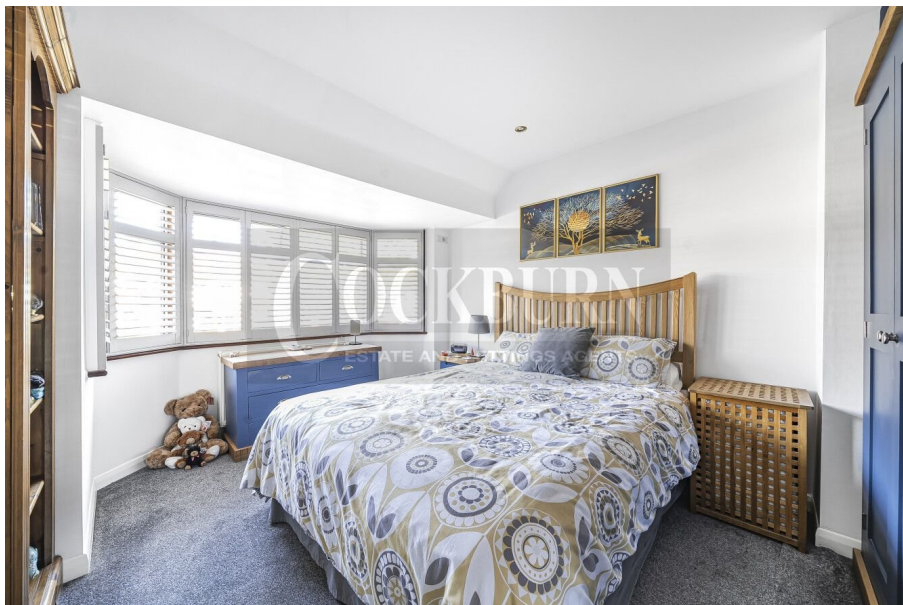


Cockburn present this wonderful 1930s three bedroom terraced house in Lee, ready for a new family to put their own mark on.

Featuring a light and spacious reception room, separate extended kitchen/dining area, three well proportioned bedrooms, family bathroom and a private 40ft mature rear garden. Parking woes are a thing of the past, with dedicated space in the large garage to the bottom of the garden, accessible through a side service road. The garage could also alternatively be used as a workshop space, or even further storage space.

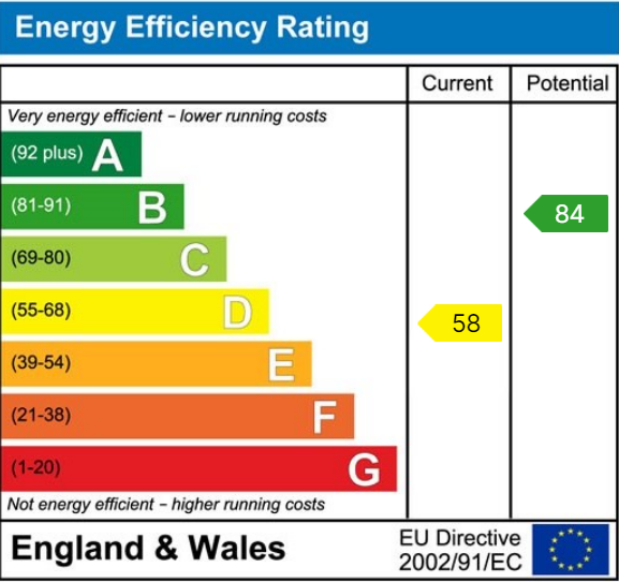
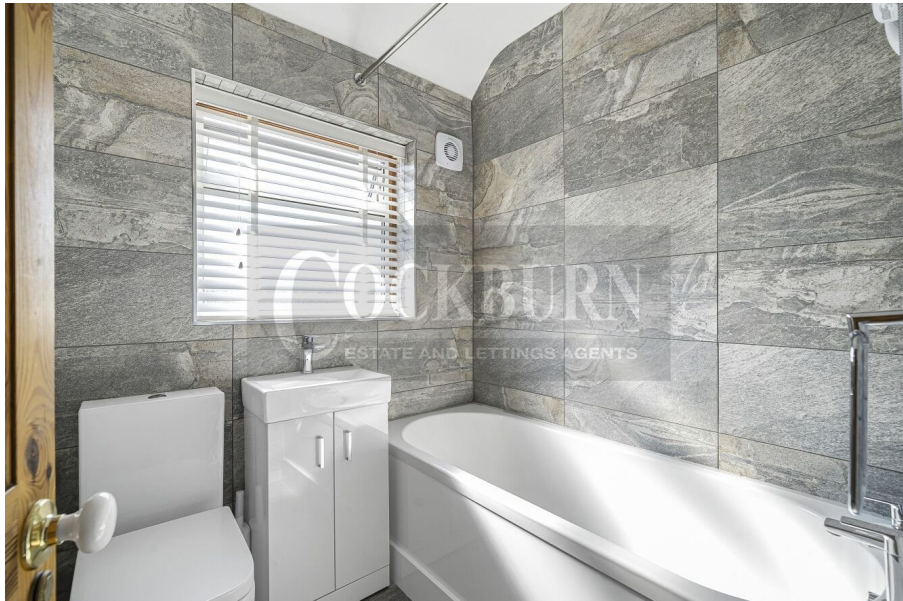
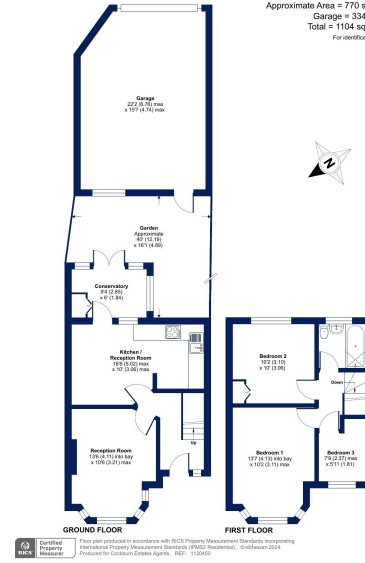
The property also benefits from a new roof fitted in 2018, a refurbished bathroom in 2019, and potential to extend STPP. Jevington Way is ideally located on a quiet residential road close to local amenities, schools, nurseries and transport links.





Jevington Way, London, SE12

Approximate Area = 770 sq ft / 71.5 sq m
 Garage = 334 sq ft / 31 sq m
 Total = 1104 sq ft / 102.5 sq m
 For identification only - Not to scale



Cockburn EA
 352 Footscray Road,
 London, SE9 2EB
 t: 020 8859 8590