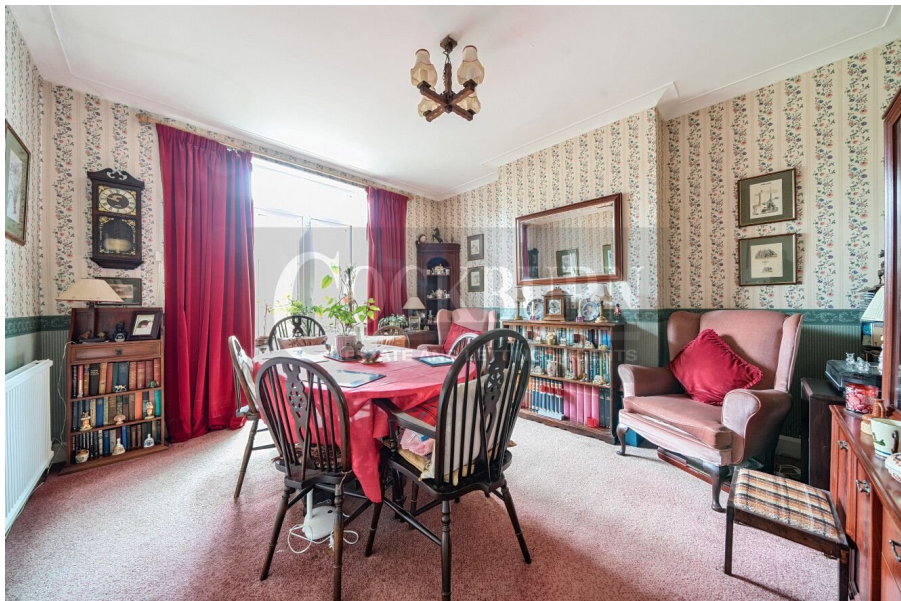




# Le May Avenue, Grove Park, SE12

Guide Price £575,000

3 1 2



- Three Bedroom Semi-Detached Family Home
- Two Reception Rooms
- Off Street Parking & Garage
- Potential To Extend STPP
- Well-Maintained Rear Garden
- Excellent Bus Links Keeping You Connected With Bromley, Eltham & Surrounding Areas
- Walking Distance To Grove Park Railway Station
- Catchment Area For Highly Regarded Schools
- EPC Rating D - Potential B
- Council Tax Band E - London Borough Of Lewisham



\*\*\* GUIDE PRICE £575,000 - £600,000 \*\*\*

Located on the extremely popular tree-lined Le May Avenue, this semi detached home is ideal for the growing family.

