



**COCKBURN**  
ESTATE AND LETTINGS AGENTS

[cockburn-online.co.uk](http://cockburn-online.co.uk)

## Thursley Road, Mottingham, SE9

£450,000

 3  1  1

- Three Bedroom End Terraced House
- Large Through Reception/ Dining Room
- Three Well Proportioned Bedrooms
- Large Garden To Rear
- Ideal For Growing Families
- Perfect For First Time Buyers
- Excellent Transport Links For Those Needing To Commute
- Close To All Local Amenities Including Shops & Schools
- Energy Rating C - Potential B
- Council Tax Band C - London Borough Of Bromley



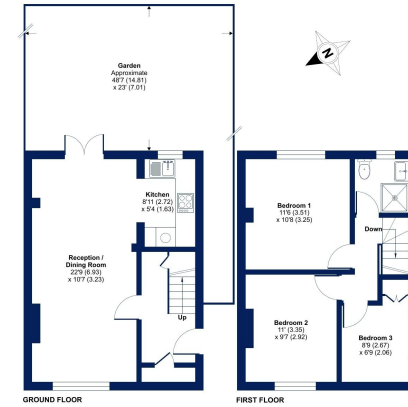
**Introducing Thursley Road – a wonderful family home in the ever popular area of SE9!**

*Thursley Road is an exceptional property, boasting ample space throughout for growing families. Briefly comprising a large through reception/dining room, kitchen, three well proportioned bedrooms and family bathroom, the property also boasts both off street parking to the front and a well maintained garden to the rear. Ideally located with excellent transport links for those needing to commute, new owners will also have the benefit of being within easy reach of local shops, amenities and leisure facilities.*

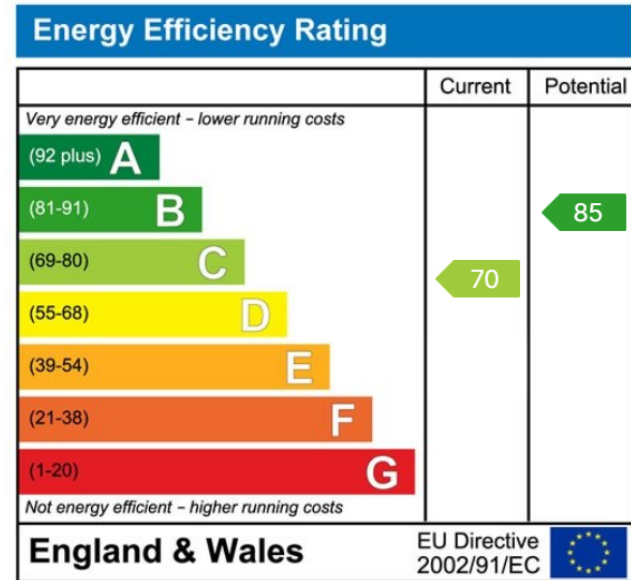




Thursley Road, London, SE9  
 Approximate Area = 762 sq ft / 70.7 sq m  
 For information only - Not to scale



Co-Certified Property Measurement  
 This plan complies in accordance with RICS Property Measurement Standards incorporating International Property Measurement Standards (IPMS) Assessment © 2024  
 Professional Council's Quality Rights. RPS - 11/2024



**Cockburn EA**  
 352 Footscray Road,  
 London, SE9 2EB  
 t: 020 8859 8590