



Charminster Road, Mottingham, SE9

Guide Price £375,000

3 1 1



- Complete Onward Chain
- Large Reception Room
- New Boiler Fitted Only 14 Months Ago
- Perfect For First Time Buyers
- Highly Regarded Schools Within Easy Reach
- Three Bedroom Terraced House
- Generous Garden To Rear
- Excellent Transport Links For Those Needing To Commute
- Ideal Buy To Let Investment
- Council Tax Band C - London Borough Of Bromley



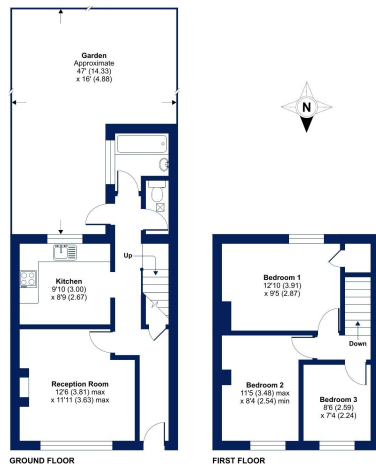
*** GUIDE PRICE £375,000 - £400,000 ***

Introducing Charminster Road – A Three Bedroom Terraced Home With A Complete Onward Chain!

Cockburn are proud to present this delightful three double bedroom terraced house situated in the heart of London. This property boasts a complete onward chain, and is an ideal first time purchase or buy to let investment.



Charminster Road, London, SE9
 Approximate Area = 764 sq ft / 70.9 sq m
 For information only - Not to scale



Created Property Information Floor plan produced in accordance with RICS Property Measurement Standards incorporating International Property Measurement Standards (IPMS) (London, 2018). © Cockburn 2024. Prepared for Cockburn Estate Agents. 1021 1102266

