



Charminster Road, Mottingham, SE9

£400,000

3 1 1



Introducing Charminster Road – A Three Bedroom Terraced Home With A Complete Onward Chain!

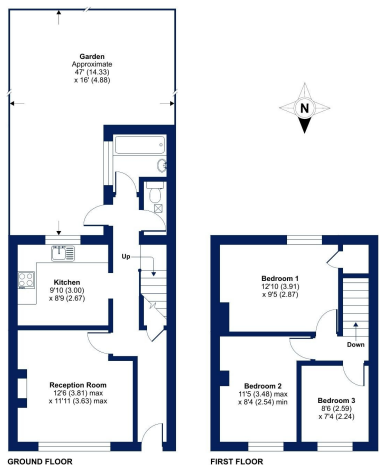
Cockburn are proud to present this delightful three double bedroom terraced house situated in the heart of London. This property boasts a complete onward chain, and is an ideal first time purchase or buy to let investment.

The property features a generously sized reception room, kitchen, downstairs bathroom, two double bedrooms and one single bedroom. Owners will enjoy the luxury of a spacious and well-maintained garden, with access to open woodlands at the back, whilst commuting is a breeze with excellent transport links in close proximity. Discover the convenience of having a range of local amenities right at your fingertips. From shopping centers and restaurants to recreational facilities, Charminster Road offers a vibrant and diverse neighborhood that caters to all your daily needs.



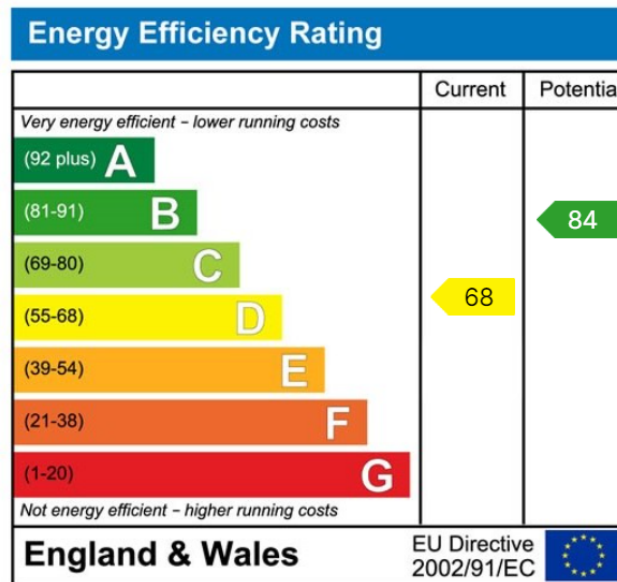
Charminster Road, London, SE9

Approximate Area = 764 sq ft / 70.9 sq m
For identification only - Not to scale



Copyright Cockburn EA
Floor plan produced in accordance with RICS Property Measurement Standards incorporating International Property Measurement Standards (IPMS) (London), © Cockburn 2024. Prepared for Cockburn Estate Agents. RSP: 11/2024

- Complete Onward Chain
- Large Reception Room
- New Boiler Fitted Only 14 Months Ago
- Perfect For First Time Buyers
- Highly Regarded Schools Within Easy Reach
- Three Bedroom Terraced House
- Generous Garden To Rear
- Excellent Transport Links For Those Needing To Commute
- Ideal Buy To Let Investment
- Council Tax Band C - London Borough Of Bromley



Cockburn EA

352 Footscray Road,
London, SE9 2EB

t: 020 8859 8590