

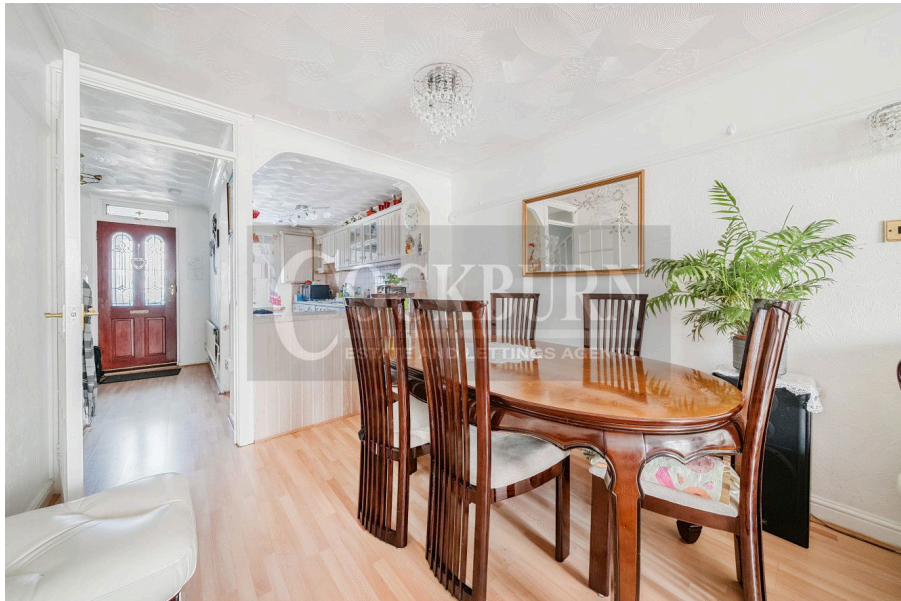


## Lonsdale Close, Mottingham, SE9

Offers Over £420,000

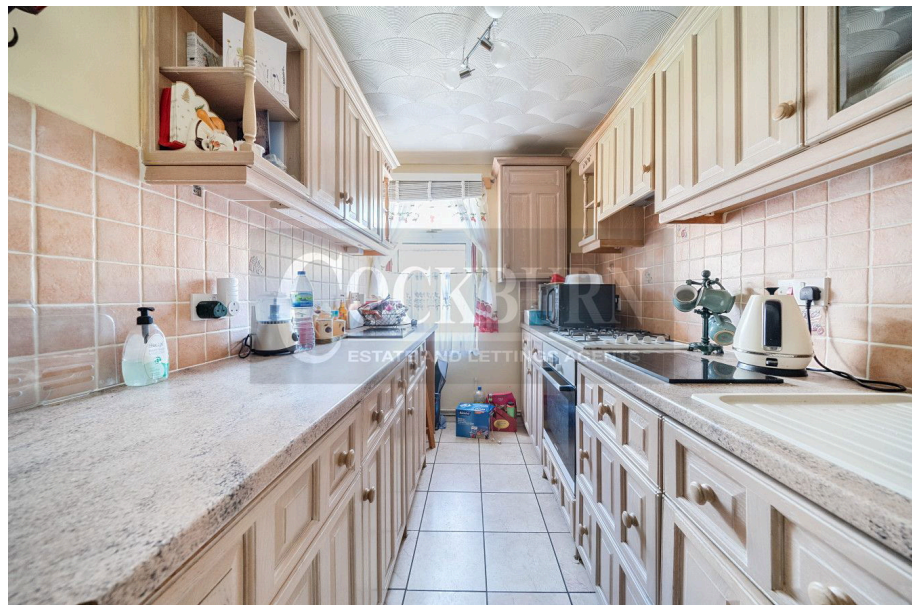
 2  1  2

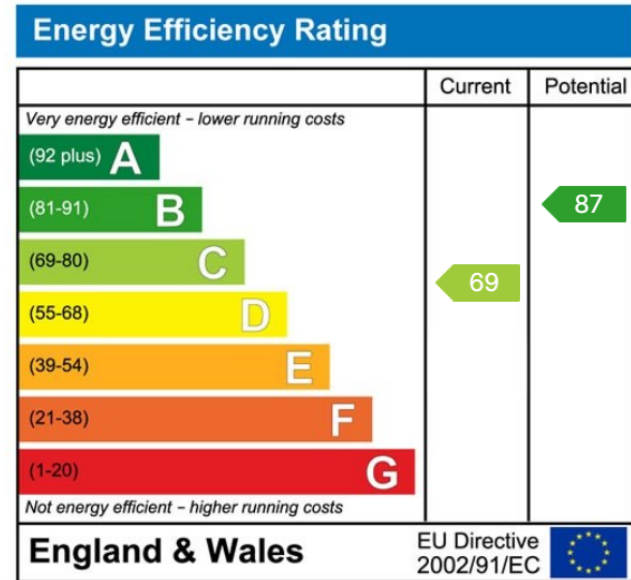
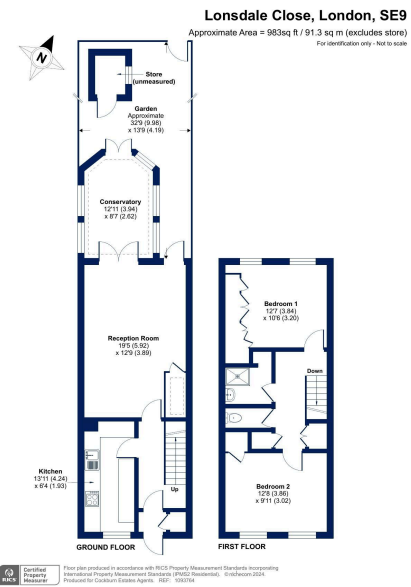
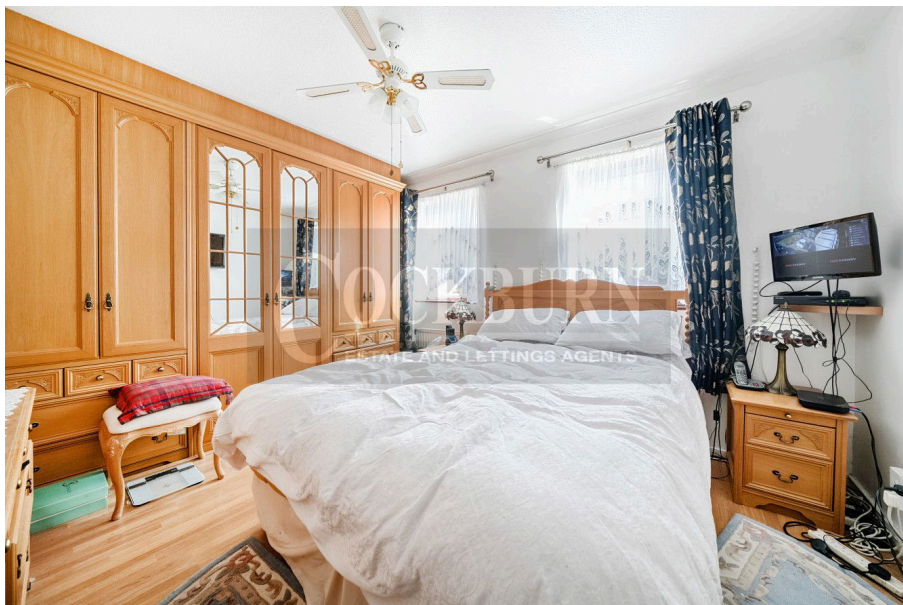
- Chain Free Sale
- Two Double Bedrooms
- Large Reception Room
- Extended Conservatory
- Ideal First Time Purchase Or Buy To Let Investment
- Quiet Cul-De-Sac Location
- Ideally Located Between Mottingham & Grove Park
- Excellent Transport Links Nearby
- EPC TO FOLLOW
- Council Tax Band C - London Borough Of Lewisham



**\*\*\* CHAIN FREE \*\*\***

*Cockburn are pleased to present this 1970's two bedroom terraced house situated, off Dunkery Road. This property is a perfect blank canvass for anyone looking to put their own stamp on a property. Set over two floors, the property benefits from a large reception room, kitchen, and extended conservatory floor, alongside a well presented garden to rear. To the upstairs of the property, you will find two bedrooms alongside a family bathroom Set in a quiet residential cul-de-sac, the property is ideally situated between Mottingham and Grove Park. This is an ideal opportunity for first time buyers, and is one not to be missed!*





**Cockburn EA**  
 352 Footscray Road,  
 London, SE9 2EB  
 t: 020 8859 8590