



Cedar Mount, Mottingham Lane, London, SE9 4RU

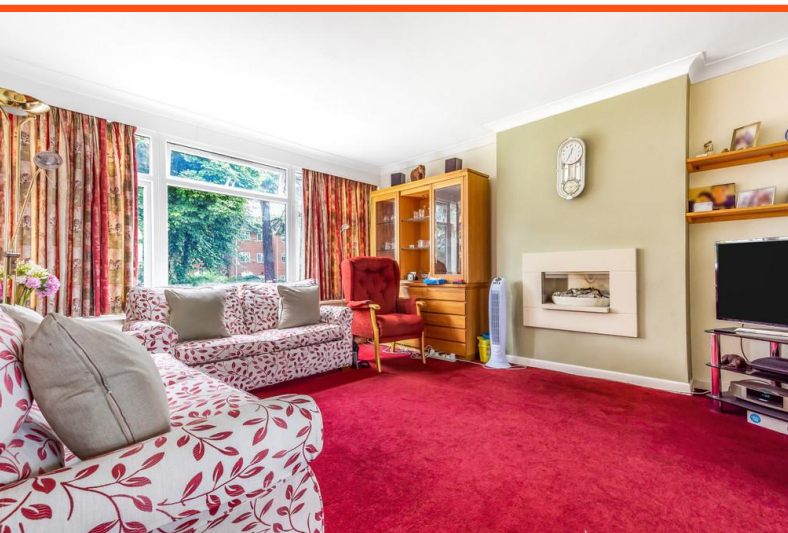
Asking Price £325,000

COCKBURN
ESTATE AND LETTINGS AGENTS

A rare opportunity to buy a larger than usual two bedroom apartment in a 1950's development set back from Mottingham Lane amongst the peaceful communal gardens.

This two bedroom apartment offers bright and spacious rooms and large windows. Upon entering, a coat / shoe area awaits, leading to a large living room that leads onto a kitchen with potential to go for open plan living (STPP). A door from the living room leads through to two double bedrooms, plenty of storage cupboards and a bathroom.

Additional benefits include a private internal storage cupboard (in the communal hall ways) and the property comes with the added bonus of having a garage en-bloc.



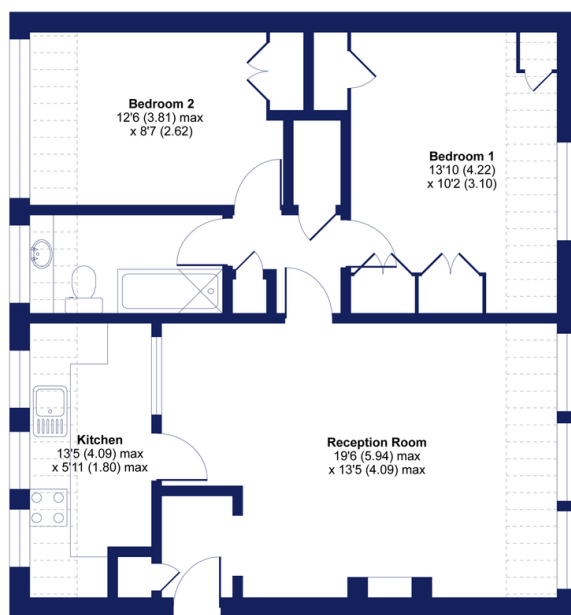
Cedar Mount, Mottingham Lane, London, SE9



Approximate Area = 589 sq ft / 54.7 sq m
Including Limited Use Area(s) = 134 sq ft / 12.4 sq m
Total = 723 sq ft / 67.2 sq m

For identification only - Not to scale

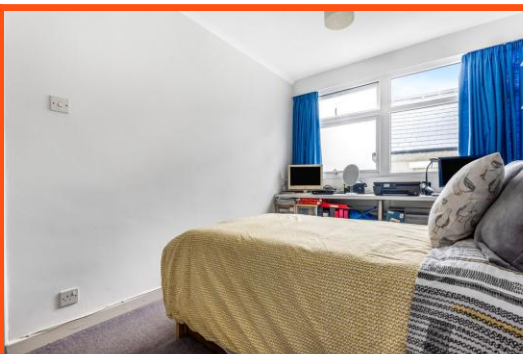
Denotes restricted
head height



FIRST FLOOR



Floor plan produced in accordance with RICS Property Measurement Standards incorporating International Property Measurement Standards (IPMS: Residential). © nitchcom 2021. Produced for Cockburn Estates Agents. REF: 749015



Cockburn EA
38 Mottingham Road, Mottingham,
London, SE9 4QR

t: **020 8857 8857**
cockburn-online.co.uk

IMPORTANT: we would like to inform prospective purchasers that these sales particulars have been prepared as a general guide only. A detailed survey has not been carried out, nor the services, appliances and fittings tested. Room sizes should not be relied upon for furnishing purposes and are approximate. If floor plans are included, they are for guidance only and illustration purposes only and may not be to scale. If there are any important matters likely to affect your decision to buy, please contact us before viewing the property.