



PUTTERILLS

— est. 1992 —

Lords Wood, Welwyn Garden City, AL7 2HG  
Offers Over £550,00



## PROPERTY SUMMARY

Discover this beautifully presented four-bedroom detached family home, perfectly situated in a tranquil cul-de-sac, offering both convenience and serenity. Located close to local amenities, renowned schools, and picturesque woodland walks right at your doorstep, this property is ideal for family living.

This well-presented home offers spacious living with a cosy lounge, separate dining room, bright conservatory, modern kitchen, four comfortable bedrooms, stylish bathroom, ample parking including garage and caravan space, and a well-kept rear garden ideal for family life.

One of the standout features of this home is its expansive external space, providing ample parking and a generous side garden with potential for extension subject to planning permission.

4



2



2





























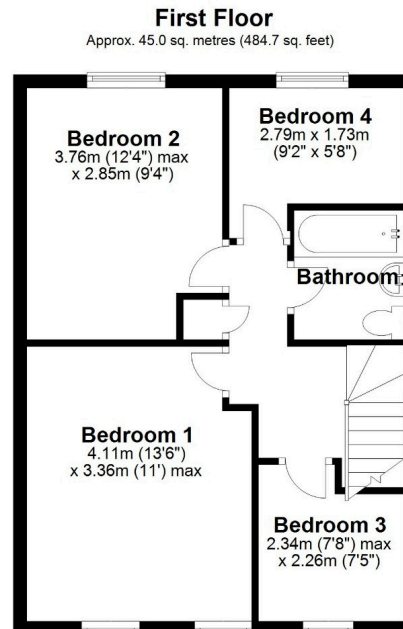
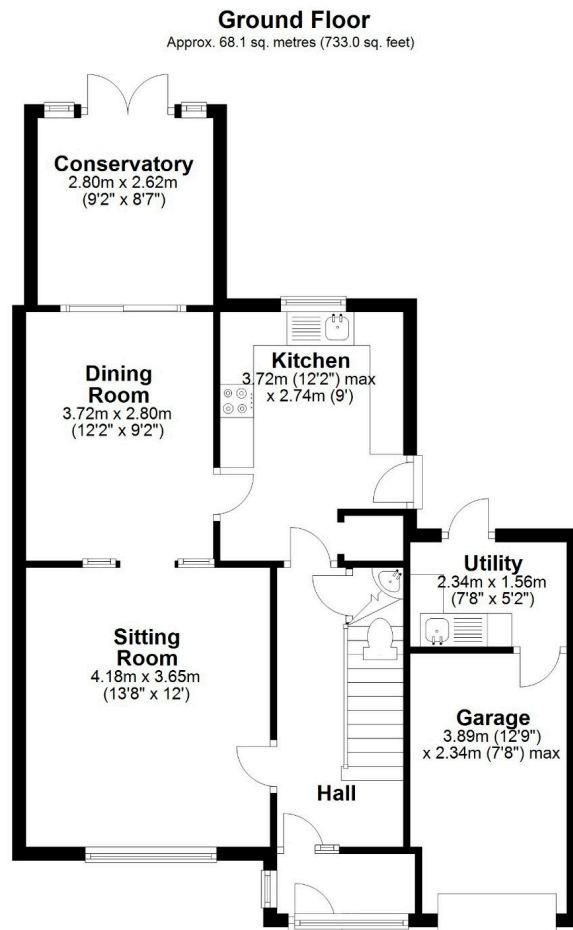
LOCAL AUTHORITY  
Welwyn Hatfield

TENURE Freehold

COUNCIL TAX BAND  
E

VIEWINGS

By prior appointment only



Total area: approx. 113.1 sq. metres (1217.8 sq. feet)

Score	Energy rating	Current	Potential
92+	A		
81-91	B		85 B
69-80	C		
55-68	D	66 D	
39-54	E		
21-38	F		
1-20	G		

Agents Note: Whilst every care has been taken to prepare these particulars, they are for guidance purposes only. All measurements are approximate and are for general guidance purposes only and whilst every care has been taken to ensure their accuracy, they should not be relied upon and potential buyers/tenants are advised to recheck the measurements



OFFICE ADDRESS  
34 Wigmores North  
Welwyn Garden  
City  
Hertfordshire  
AL8 6PH

CONTACT DETAILS  
01707 393333  
[lwgc@putterills.co.uk](mailto:lwgc@putterills.co.uk)  
[www.putterills.co.uk](http://www.putterills.co.uk)