



PUTTERILLS

est. 1992



**Oldfield Rise, Whitwell, SG4 8AP**  
**Freehold**  
**Guide Price £465,000**



# PROPERTY SUMMARY

Welcome to this three-bedroom semi-detached house situated in the peaceful and sought-after cul-de-sac of Oldfield Rise in Hitchin. This beautiful home offers a warm and inviting atmosphere, perfect for families, couples, or first-time buyers looking to settle in a tranquil village location.

Oldfield Rise offers a tranquil village setting, providing residents with a lovely sense of community. The property's proximity to the recreation ground ensures a healthy and active lifestyle. Spend your weekends exploring the park, playing sports, or enjoying a picnic with family and friends. For nature enthusiasts, there are also scenic walking and cycling routes nearby, allowing you to make the most of the beautiful surrounding countryside.

3



1



1











  
PUTTERILLS  
— est. 1992 —



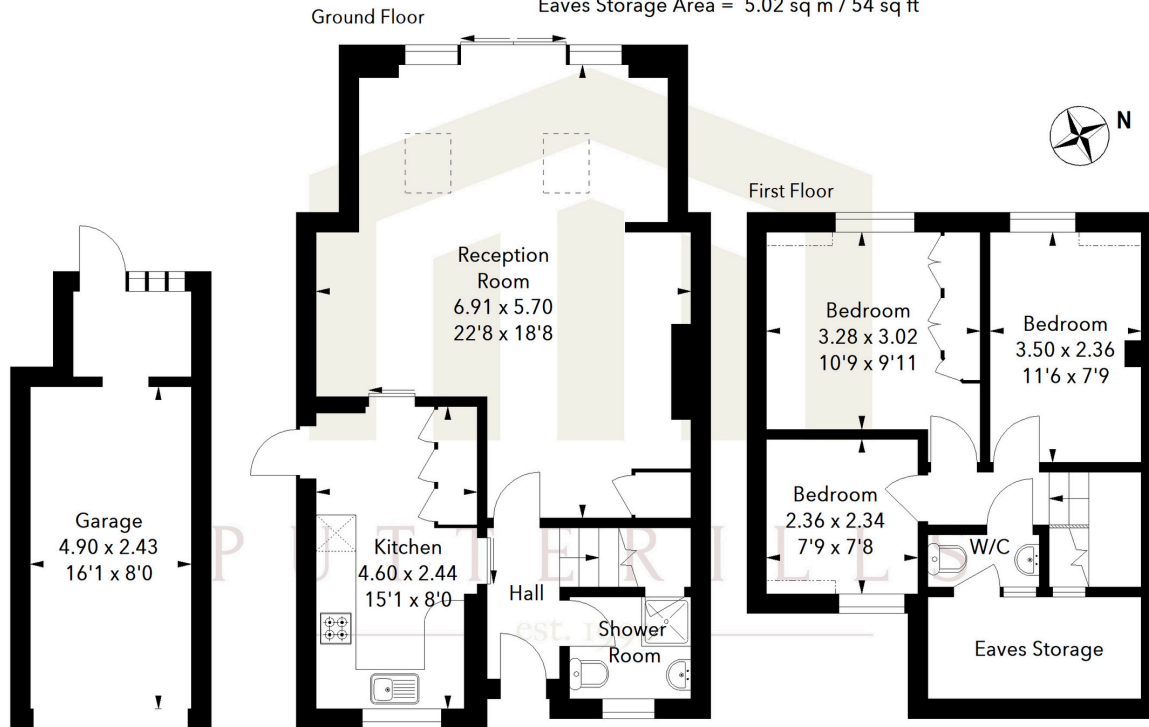






## Oldfield Rise, SG4

Approximate Area = 103.40 sq m / 1113 sq ft  
 (Including Garage & Eaves Storage)  
 Garage Area = 14.59 sq m / 157 sq ft  
 Eaves Storage Area = 5.02 sq m / 54 sq ft



(Not shown in actual location / orientation)

Illustration For Identification Purposes Only.  
 All measurements and areas are approximate, not to scale.  
 © Orange Tree Photography

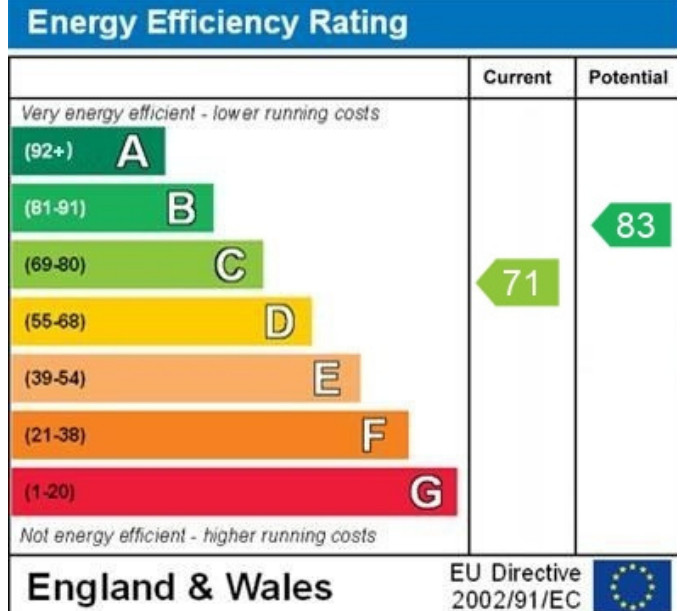
LOCAL AUTHORITY  
 North Herts

TENURE  
 Freehold

COUNCIL TAX BAND: D

VIEWINGS

By prior appointment only



Agents Note: Whilst every care has been taken to prepare these particulars, they are for guidance purposes only. All measurements are approximate and are for general guidance purposes only and whilst every care has been taken to ensure their accuracy, they should not be relied upon and potential buyers/tenants are advised to recheck the measurements



### OFFICE ADDRESS

Putterills Hitchin  
 60 Hermitage Road  
 Hitchin  
 SG5 1DB

### CONTACT DETAILS

01462 632222  
 hitchin@putterills.co.uk  
 www.putterills.co.uk