



PUTTERILLS

est. 1992



£575,000 Freehold
Sparrow Gardens
Lower Stondon, SG16

PROPERTY SUMMARY

Situated in a peaceful cul-de-sac is this superb family home benefiting from four spacious bedrooms, driveway, garage with rear workshop and a spacious and easily maintained garden.

4



2



2





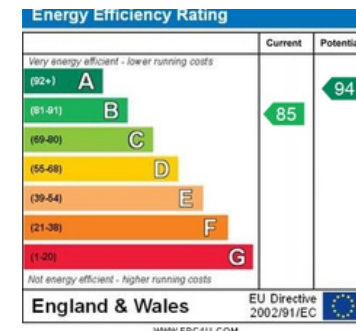


LOCAL AUTHORITY
Central Beds

TENURE
Freehold

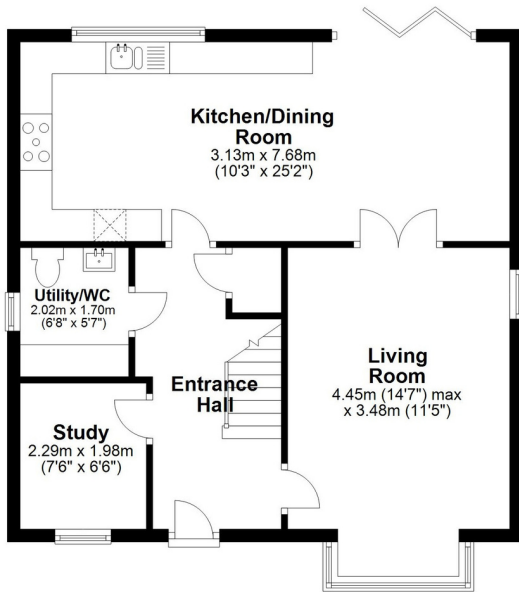
COUNCIL TAX BAND
F

VIEWINGS
By prior appointment only

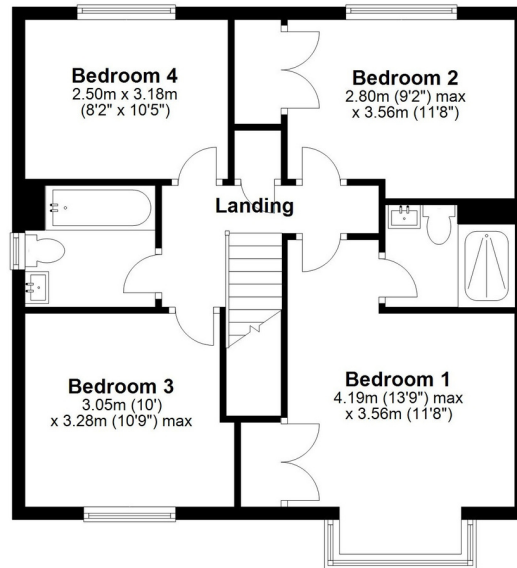


Agents Note: Whilst every care has been taken to prepare these particulars, they are for guidance purposes only. All measurements are approximate and are for general guidance purposes only and whilst every care has been taken to ensure their accuracy, they should not be relied upon and potential buyers/tenants are advised to recheck the measurements

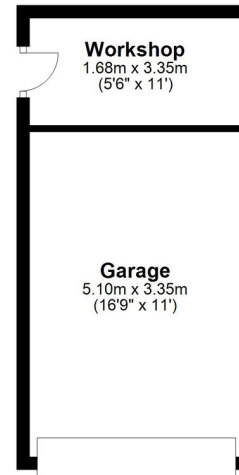
Ground Floor
Approx. 59.4 sq. metres (639.8 sq. feet)



First Floor
Approx. 59.4 sq. metres (639.0 sq. feet)



Outbuilding
Approx. 23.1 sq. metres (248.3 sq. feet)



Total area: approx. 141.9 sq. metres (1527.1 sq. feet)

Floor Plan measurements are approximate & for illustrative purposes only. While we do not doubt the floor plans accuracy, we make no guarantee, warranty or representation as to the accuracy and completeness of the floor plan.
Plan produced using PlanUp.



OFFICE ADDRESS

Putterills Hitchin
60 Hermitage Road
Hitchin
SG5 1DB

CONTACT DETAILS

01462 632222
hitchin@putterills.co.uk
www.putterills.co.uk