



KINGSLEY ROAD, PINNERS HA5 5RB



Presented beautifully, this three-bedroom Edwardian house is situated on a quiet no-through road. It's conveniently located within walking distance of St. John Fisher Catholic Primary and Nower Hill High Schools (both rated Outstanding by Ofsted). Additionally, it's just half a mile away from Pinner Town Centre, which offers an array of shops, restaurants, a supermarket, and the Pinner Metropolitan Line Tube Station.

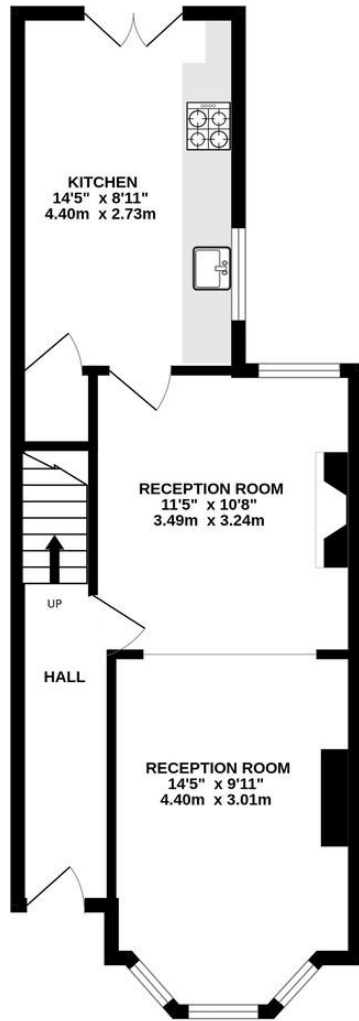
The accommodation comprises a 25-foot living room with wood flooring and a charming feature fireplace. The 14-foot contemporary kitchen includes a breakfast area

Upstairs, you'll find three double bedrooms and a bathroom.

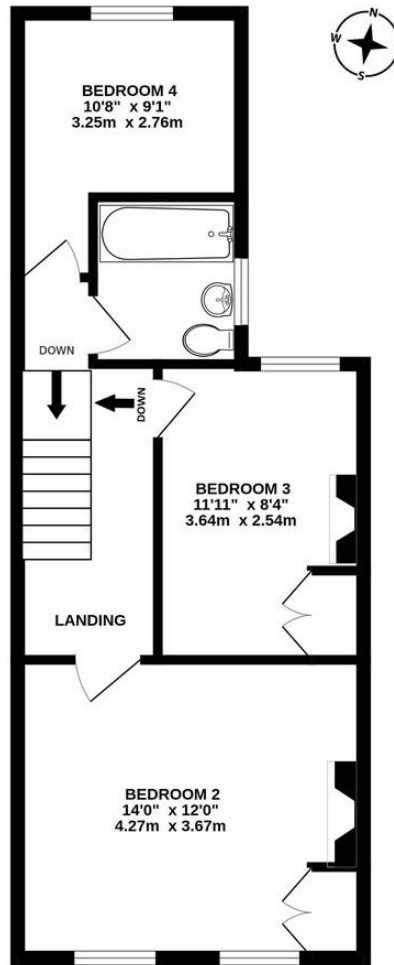
Outside, the property boasts a well-stocked 60-foot rear garden with a patio, a main lawn, and a storage shed. Notably, this property comes with the benefit of a complete upper chain.



GROUND FLOOR  
448 sq.ft. (41.6 sq.m.) approx.



1ST FLOOR  
455 sq.ft. (42.3 sq.m.) approx.



TOTAL FLOOR AREA : 903 sq.ft. (83.9 sq.m.) approx.

Whilst every attempt has been made to ensure the accuracy of the floorplan contained here, measurements of doors, windows, rooms and any other items are approximate and no responsibility is taken for any error, omission or mis-statement. This plan is for illustrative purposes only and should be used as such by any prospective purchaser. The services, systems and appliances shown have not been tested and no guarantee as to their operability or efficiency can be given.  
Made with Metropix ©2024.



