



**EASTCOTE ROAD, PINNER, MIDDLESEX, HA5 1DZ**





The “Oak House,” a remarkable dwelling that stands as a once-in-a-generation opportunity.

This bespoke home, crafted by renowned house builder Mr. Cutler for his own residence, is now available for sale with no onward chain. Situated just a stone’s throw away from Pinner Village, this substantial family home offers ample potential for extension (subject to the usual planning consent). It occupies a generous plot with a large frontage, detached garage, and plenty of off-street parking. The overall plot size is approximately 0.238 acres.

**Accommodation:**

Step inside, and you’re greeted by a grand staircase. Its balustrades, meticulously carved from centuries-old oak, seem to breathe with the wisdom of ages. The front aspect reception room features panelled walls and an exposed brick chimney breast. The rear reception room opens to the garden through its doors. Additional rooms include a breakfast room, a fitted kitchen, and a guest WC. Notably, there is a large ground floor room that was once a dental studio, complete with an adjoining waiting room. These rooms offer great potential for conversion into habitable space.

**Upstairs:** The magnificent stained glass window that graces the front façade has sunlight filters through its kaleidoscope of colors illuminating the galleried landing, which leads to five bedrooms, a family bathroom, and a separate WC. The large loft room presents an opportunity for conversion into an additional bedroom.

**Outdoor Space :**The rear garden is exceptionally private and boasts a swimming pool, raised terraces, and a patio area —perfect for entertaining.

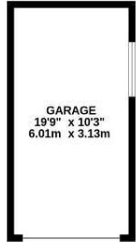
**Location:** Eastcote Road is less than 0.2 miles from Pinner Village. The property is within walking distance of outstanding state and private schools. Pinner’s Metropolitan line station is a short 5-minute walk away (via the rear entrance at Cecil Park), providing convenient access to London.

Chain Free

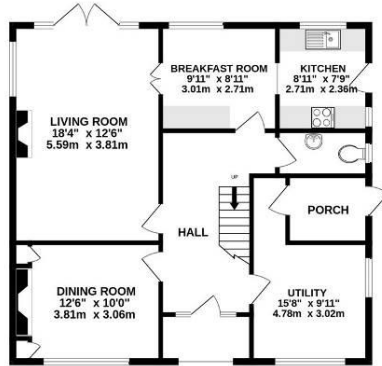




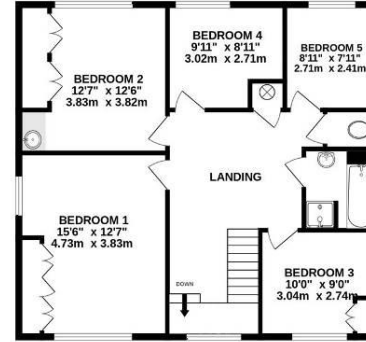
OUTBUILDING  
202 sq.ft. (18.8 sq.m.) approx.



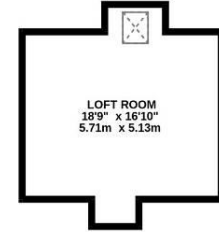
GROUND FLOOR  
842 sq.ft. (77.2 sq.m.) approx.



1ST FLOOR  
848 sq.ft. (78.0 sq.m.) approx.



2ND FLOOR  
259 sq.ft. (24.1 sq.m.) approx.



TOTAL FLOOR AREA : 2151 sq.ft. (199.8 sq.m.) approx.

Whilst every attempt has been made to ensure the accuracy of the floorplan contained here, measurements of doors, windows, rooms and any other items are approximate and no responsibility is taken for any error, omission or mis-statement. This plan is for illustrative purposes only and should be used as such by any prospective purchaser. The services, systems and appliances shown have not been tested and no guarantee as to their operability or efficiency can be given.  
Made with Metropix ©2024

