



  
**Andrew Pearce**  
PINNER

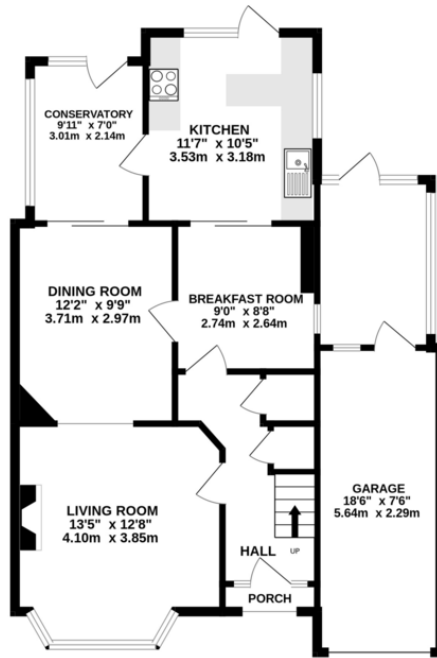
**RAYNERS LANE, PINNER, MIDDLESEX HA5 5HT**



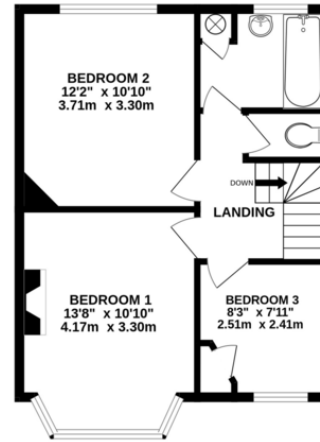
**A traditional 'Cutler' built three bedroom semi-detached family home in need of modernisation to unlock its full potential. Chain free.**



GROUND FLOOR  
838 sq.ft. (77.9 sq.m.) approx.



1ST FLOOR  
452 sq.ft. (42.0 sq.m.) approx.



TOTAL FLOOR AREA: 1290 sq.ft. (119.8 sq.m.) approx.

Whilst every attempt has been made to ensure the accuracy of the floorplan contained here, measurements of doors, windows, rooms and any other items are approximate and no responsibility is taken for any error, omission or mis-statement. This plan is for illustrative purposes only and should be used as such by any prospective purchaser. The services, systems and appliances shown have not been tested and no guarantee as to their operability or efficiency can be given.  
Made with Metropix ©2023



