



Andrew Pearce
PINNER

WESTBURY LODGE CLOSE, PINNER, HA5 3XL £335,000



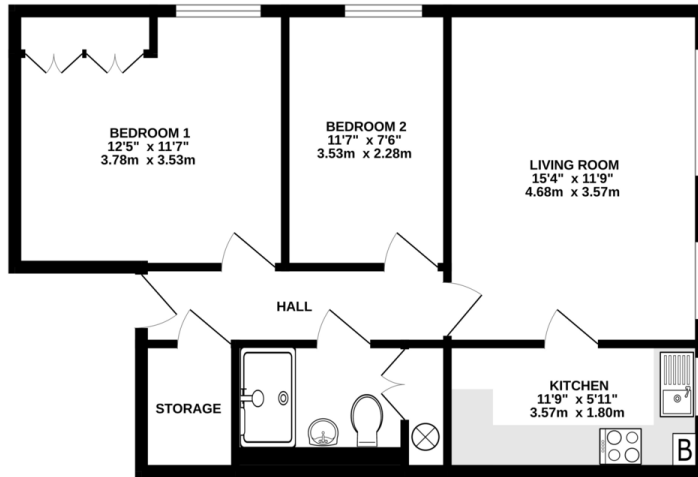
A two bedroom retirement apartment for the over 60's located within a short walk of Pinner Village.

Accommodation comprises; security entrance door leading to a communal hallway, own front door, spacious hallway, lounge with two windows to the side aspect with secondary glazing, door to a well-appointed and fully fitted kitchen, fitted shower room, master bedroom with fitted wardrobes and a good sized second bedroom. Communal Gardens to the front and rear with communal parking for visitors and residents.

Accessibility: Distances: bus stop 400 yards; shops 400 yards; post office 460 yards; town centre 400 yards; GP 460 yards.



3RD FLOOR
611 sq.ft. (56.7 sq.m.) approx.



TOTAL FLOOR AREA: 611 sq.ft. (56.7 sq.m.) approx.
While every attempt has been made to ensure the accuracy of the floorplan contained here, measurements of doors, windows, rooms and any other items are approximate and no responsibility is taken for any error, omission or misstatement. This plan is for illustrative purposes only and should be used as such by any prospective purchaser. The services, systems and appliances shown have not been tested and no guarantee as to their operability or efficiency can be given.
Made with Metropix ©2023

