



Andrew Pearce
PINNER

DINGLES COURT, UXBRIDGE ROAD, HA5 3RT

£147,000 Fixed Price



This one bedroom second floor flat with Juliet balcony, is ideally located on the sought after Dingles Court development in Pinner. Set in beautiful communal gardens with playing fields, allotments and ancient woodlands nearby.

Alongside its proximity to Harrow, Pinner and Watford you can enjoy a wide range of restaurants, shopping and recreational facilities. The Metropolitan Line is nearby and there are regular bus services for local travel.

The development features non allocated off road parking, security entry-phone system with CCTV, pull cord alarm system and a professional onsite scheme manager during office hours. As well a lift to all floors.

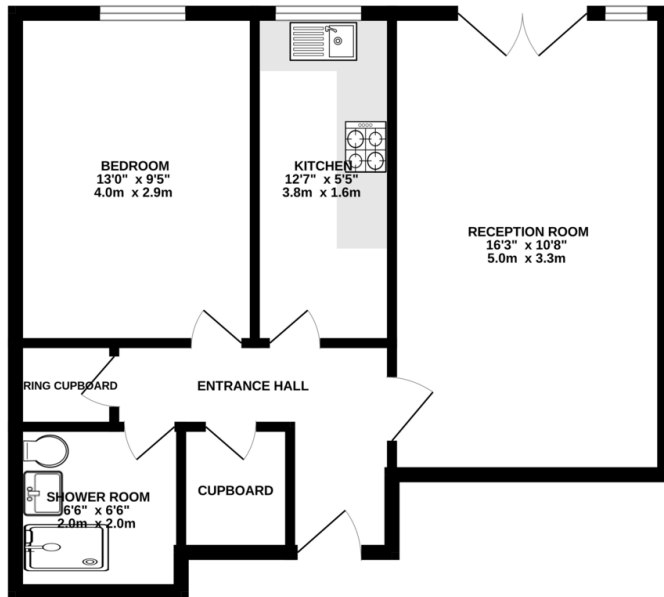
Purchasers will own 100% of the property but for which they pay only 70% of the full market value, as 30% is discounted by the housing association.

For the over 55's.

Service Charge: £2,314 pa
New Lease on completion reset to 100 years



GROUND FLOOR
515 sq.ft. (47.9 sq.m.) approx.



TOTAL FLOOR AREA: 515 sq.ft. (47.9 sq.m.) approx.
Whilst every attempt has been made to ensure the accuracy of the floorplan contained here, measurements of doors, windows, rooms and any other items are approximate and no responsibility is taken for any error, omission or mis-statement. This plan is for illustrative purposes only and should be used as such by any prospective purchaser. The services, systems and appliances shown have not been tested and no guarantee as to their operability or efficiency can be given.
Made with Metropac ©2023



