



Andrew Pearce
PINNER

ELM PARK COURT, ELM PARK ROAD, HA5 3LL £475,000



Andrew Pearce Property Consultants are delighted to present this stunning ground floor three bedroom art deco apartment located moments from the heart of Pinner Village.

This apartment has been fully refurbished to a very high standard and is ready to move into immediately. Accommodation comprises of; a welcoming entrance hallway, high gloss finish kitchen with mood lighting and integrated appliances, high quality bathroom suite, spacious lounge with views onto the communal gardens and three double bedrooms. The Master bedroom benefits from an array of fitted wardrobes and is generous sized (15,0" – 11,11").

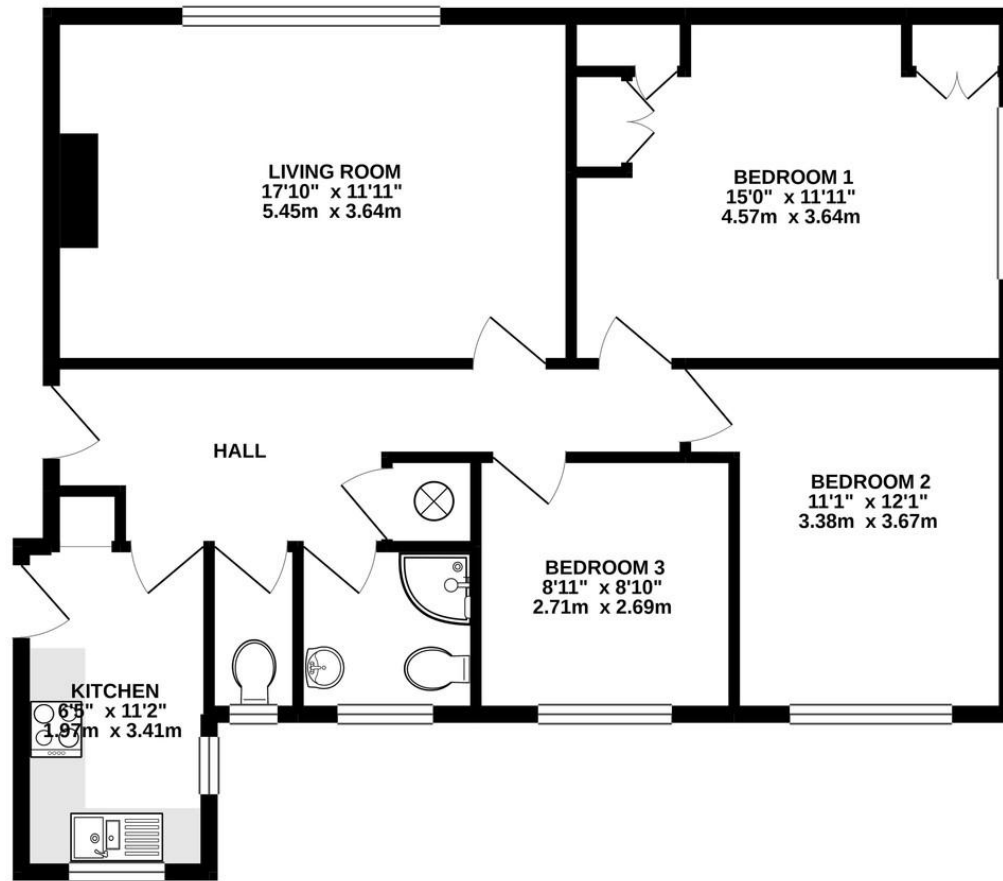
The apartment has been re-wired throughout and redecorated to an extremely high standard.

This Grade II listed Building boasts stunning communal grounds of which are private and maintained to the highest order as well as ample parking for residents and visitors. Located a short stroll from Pinner High Street with its delightful selection of shops, eateries, coffee houses and supermarkets. Close by are several bus routes and the Metropolitan Line station provides quick and direct access into Central London and beyond. The area is also well served with a range of recreational facilities, children's playgrounds and outstanding schools, including West Lodge and Pinner Wood.



Property also comes with the opportunity to rent a garage on site for a low fee (£30 pcm)

GROUND FLOOR
824 sq.ft. (76.6 sq.m.) approx.



TOTAL FLOOR AREA : 824 sq.ft. (76.6 sq.m.) approx.
 Whilst every attempt has been made to ensure the accuracy of the floorplan contained here, measurements of doors, windows, rooms and any other items are approximate and no responsibility is taken for any error, omission or mis-statement. This plan is for illustrative purposes only and should be used as such by any prospective purchaser. The services, systems and appliances shown have not been tested and no guarantee as to their operability or efficiency can be given.
 Made with Metrepx ©2020



