



Flat 4 1-3 New Street, Worcester, WR8 0HP **£650 Per Month**

A well presented one bedroom unfurnished top floor apartment in the heart of Upton upon Severn. The accommodation comprises; spacious lounge/dining room, kitchen with electric oven, space for fridge, space & plumbing for washing machine, double bedroom & bathroom with shower over bath. Electric heating. EPC D. Council tax band A. Available November 2024. Holding deposit £150. Deposit £750.



Flat 4, 1-3 New Street, Upton-Upon-Severn, Worcester, Worcestershire, WR8 0HP

Information

TENANT FEES:

HOLDING DEPOSIT: A refundable* holding fee equivalent to one week's rent (£150) is payable in advance in order to reserve the property. The holding fee will be deducted from the first month's rent payment. *Conditions apply

DEPOSIT: A deposit of £750 will be required as security against damage or arrears of rent.

RENT: £650 per calendar month.

FURNISHINGS: The property is offered to let unfurnished.

RESTRICTIONS: Non-smokers only, No pets

TERM: Six months minimum. A longer term may be available by negotiation.

APPLICATION: You must complete an application form and online referencing form. This must be completed and returned promptly. Photographic ID (passport) and a current proof of address will be required by all applicants.

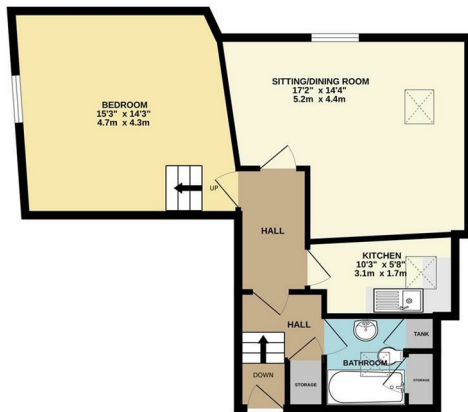
The property will remain on the market until satisfactory referencing has been received from our referencing company.

Directions

From the Upton Office proceed towards the river and the Flat will be found on the left hand side above Haywards



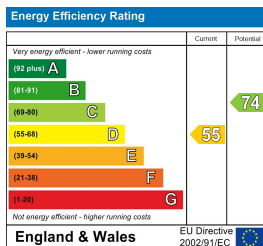
GROUND FLOOR
635 sq.ft. (59.0 sq.m.) approx.



TOTAL FLOOR AREA: 635 SQ.FT. (59.0 SQ.M.) APPROX.

While every attempt has been made to ensure the accuracy of the floor plan, measurements of areas shown should be taken from a professional surveyor's report and not used as a basis for any legal proceedings. The accuracy, content and application of this information has been verified as far as possible by the agent. The agent does not accept any liability for any loss or damage arising from the use of this information.

EPC



Material Information Report

