



Harold Road, SE19 | £475,000

020 8702 9333

crystalpalace@pedderproperty.com

pedder
We live local



In General

- Contemporary two bedroom apartment
- Large covered terrace
- Lift
- Residents parking
- Communal courtyard
- En suite shower room
- 21ft 9 kitchen / reception room
- 831 sq ft / 77.3 sq m
- First floor

In Detail

A light-filled, beautifully presented two bedroom first-floor apartment, perfectly positioned on a sought-after road in Crystal Palace.

Completed approximately five years ago, this premium home offers two spacious double bedrooms, a bright open-plan kitchen and living area, two contemporary bathrooms, and two convenient hallway storage cupboards. A private recessed covered balcony provides outside space to enjoy all year around.

Designed by Common Ground Architecture, the interiors feature elegant Silestone worktops, timber parquet flooring in the living areas, and porcelain tiles in the bathrooms. High-spec finishes throughout include Bosch appliances (washing machine, fridge/freezer, dishwasher, oven, and induction hob) and a Vent-Axia ventilation system.

The development also offers shared off-street parking, secure cycle storage, and a communal courtyard. Ideally located, the apartment is within easy walking distance of the vibrant Crystal Palace Triangle, home to a fantastic selection of independent cafes, restaurants, shops, and a cinema. Beautiful green spaces — including Upper Norwood Recreation Ground, Westow Park, and Spa Woods — are just moments away. Excellent transport links are nearby, with Gipsy Hill and Crystal Palace stations providing train and Overground services, plus local bus routes to Brixton Tube.

EPC: B | Council Tax Band: C | Lease: 120 Years remaining | SC: £264 pcm | GR: £350 pa | BI: Incl. in sc

1

2

3

4

5

6

7

8

9

10

11

12

13

14

15

16

17

18

19

20

21

22

23

24

25

26

27

28

29

30

31

32

33

34

35

36

37

38

39

40

41

42

43

44

45

46

47

48

49

50

51

52

53

54

55

56

57

58

59

60

61

62

63

64

65

66

67

68

69

70

71

72

73

74

75

76

77

78

79

80

81

82

83

84

85

86

87

88

89

90

91

92

93

94

95

96

97

98

99

100

101

102

103

104

105

106

107

108

109

110

111

112

113

114

115

116

117

118

119

120

121

122

123

124

125

126

127

128

129

130

131

132

133

134

135

136

137

138

139

140

141

142

143

144

145

146

147

148

149

150

151

152

153

154

155

156

157

158

159

160

161

162

163

164

165

166

167

168

169

170

171

172

173

174

175

176

177

178

179

180

181

182

183

184

185

186

187

188

189

190

191

192

193

194

195

196

197

198

199

200

201

202

203

204

205

206

207

208

209

210

211

212

213

214

215

216

217

218

219

220

221

222

223

224

225

226

227

228

229

230

231

232

233

234

235

236

237

238

239

240

241

242

243

244

245

246

247

248

249

250

251

252

253

254

255

256

257

258

259

260

261

262

263

264

265

266

267

268

269

270

271

272

273

274

275

276

277

278

279

280

281

282

283

284

285

286

287

288

289

290

291

292

293

294

295

296

297

298

299

300

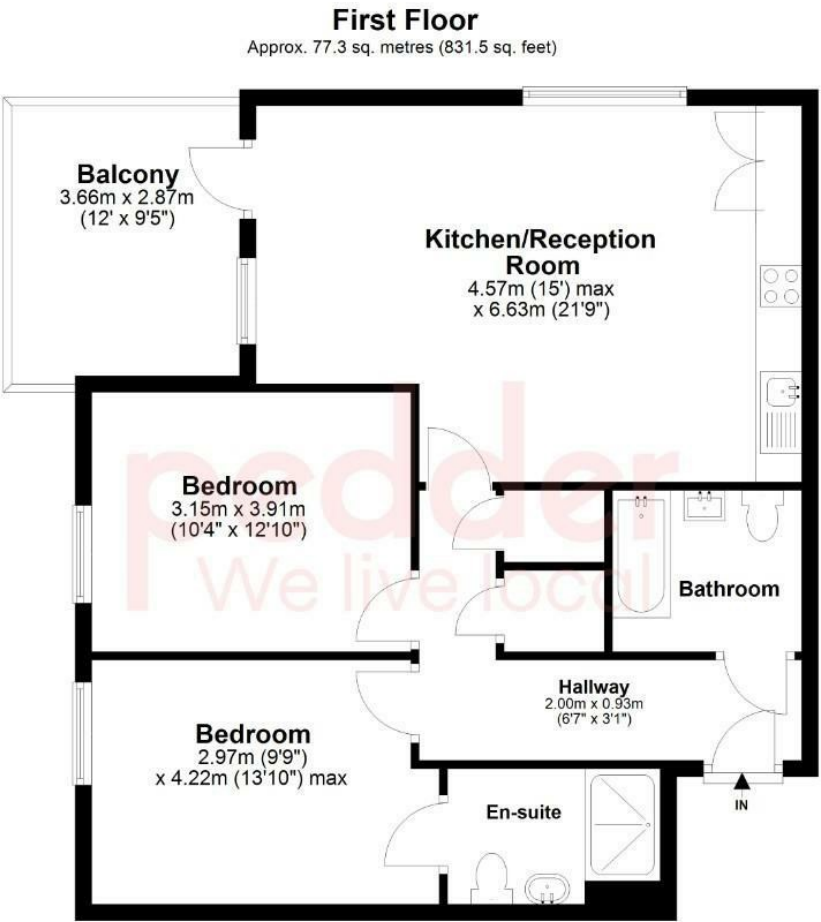
301

302

303

304

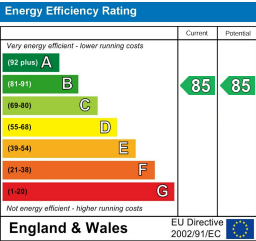
Floorplan



Total area: approx. 77.3 sq. metres (831.5 sq. feet)

Copyright www.pedderproperty.com 2024. These plans are for representation purposes only as Defined by RICS - Code of Measuring Practice. Not drawn to scale. windows and door measurements are approximate. please check dimensions, shapes and compass bearings before making any decisions reliant upon them.

Plan produced using PlanUp.



Pedder Property Ltd trading as Pedder for themselves and for the vendor/landlord of this property whose agents they are, give notice that (1) these particulars do not constitute any part of an offer or contract, (2) all statements contained within these particulars are made without responsibility on the part of Pedder or the vendor/landlord, (3) whilst made in good faith, none of the statements contained within these particulars are to be relied upon as a statement of representation or fact, (4) any intending purchaser/tenant must satisfy him/herself by inspection or otherwise as to the correctness of each of the statements contained within these particulars, (5) the vendor/landlord does not make or give either Pedder or any person in their employment any authority to make or give representation or warranty whatsoever in relation to this property.