



Gipsy Road, SE27 | £339,995

020 8702 9333
crystalpalace@pedderproperty.com





In General

- One bedroom hall floor conversion
- Light and bright accommodation
- No onward chain
- A modern separate kitchen
- A share of the freehold
- Nearby transport links

In Detail

A light-filled and very well presented one-bedroom hall floor period conversion, set on a sought-after residential road close to Gipsy Hill station.

This charming property boasts elegant high ceilings and period features, including large sash windows and a pretty feature fireplace that creates a warm and welcoming atmosphere. The separate modern kitchen offers generous work and storage space, complemented by solid wood countertops. The bedroom, positioned at the rear, provides a serene and uncluttered retreat. Additional benefits include a share of the freehold and no onward chain.

The location is equally impressive. Gipsy Hill station is just a short stroll away, ensuring excellent transport links. For leisure, you'll find an array of independent cafés, restaurants, and boutiques in Gipsy Parade, West Dulwich, and the vibrant Crystal Palace Triangle—all offering a fantastic mix of culture, dining, and shopping.

EPC: C | Council Tax Band: C | Lease: 96 Years remaining | SC: As and when on ad hoc basis | GR: £0 | BI: TBC




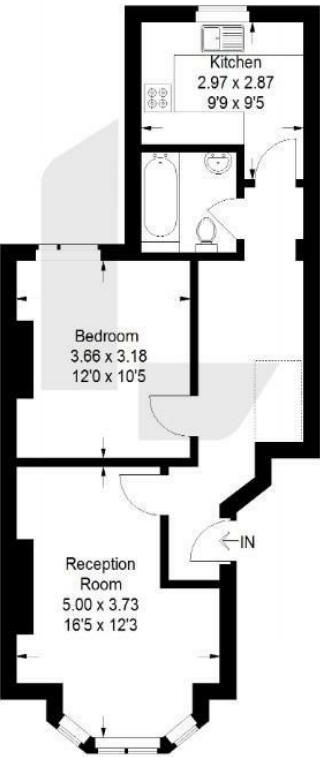
Floorplan

Gipsy Road, SE27

Approximate Gross Internal Area
50.6 sq m / 545 sq ft

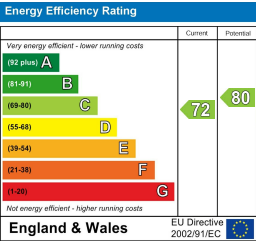


 = Reduced headroom below 1.5 m / 5'0"



Raised Ground Floor

This plan is for layout guidance only. Not drawn to scale unless stated. Windows and door openings are approximate. Whilst every care is taken in the preparation of this plan, please check all dimensions, shapes and compass bearings before making any decisions reliant upon them. (ID1263137)



Pedder Property Ltd trading as Pedder for themselves and for the vendor/landlord of this property whose agents they are, give notice that (1) these particulars do not constitute any part of an offer or contract, (2) all statements contained within these particulars are made without responsibility on the part of Pedder or the vendor/landlord, (3) whilst made in good faith, none of the statements contained within these particulars are to be relied upon as a statement of representation or fact, (4) any intending purchaser/tenant must satisfy him/herself by inspection or otherwise as to the correctness of each of the statements contained within these particulars, (5) the vendor/landlord does not make or give either Pedder or any person in their employment any authority to make or give representation or warranty whatsoever in relation to this property.