



Seymour Villas, SE20 | Guide Price £375,000

020 8702 9333

crystalpalace@pedderproperty.com

pedder
We live local



In General

- Three bedroom second floor period conversion
- No onward chain
- A share of the freehold
- Quiet location
- Ease of access to transport links
- Blank canvas

In Detail

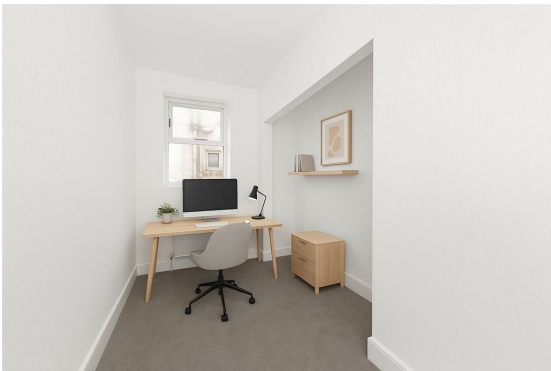
Guide £375,000 - £400,000

An impressively proportioned light and bright three bedroom second floor conversion forming part of an imposing detached Edwardian building, quietly positioned nearby multiple transport links.

This fresh blank canvas has been neutrally decorated to offer an immediately enjoyable new home that can be personalised to suit. All of the room proportions are excellent and a generous entrance hall adds to a sense of space. The accommodation totals 814 sq ft / 75.6 sq m and boasts a sunny reception room with a southerly aspect which overlook

This location enables ease of access to Anerley, Penge West, and Birkbeck rail links, whilst Crystal Palace Park is also moments away.

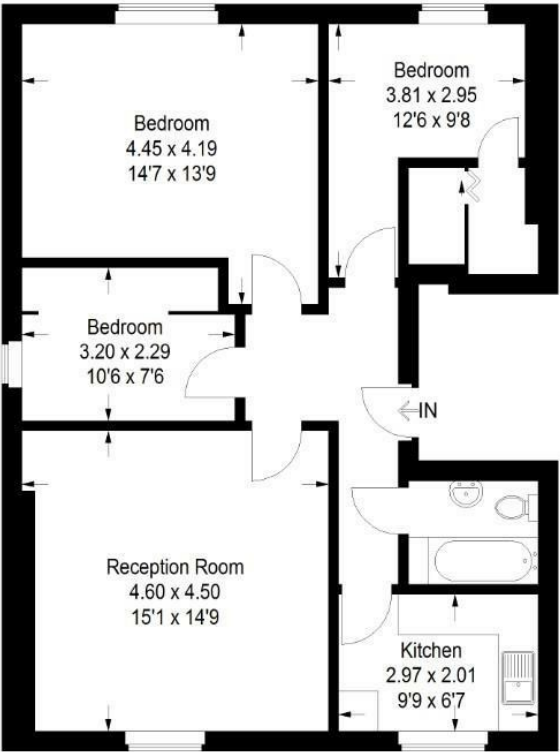
EPC: D | Council Tax Band: C | Lease: 941 Years remaining | SC: £1478.40 | GR: £0 | BI: Inc in SC



Floorplan

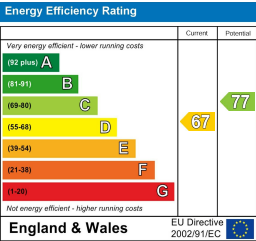
Ellesmere Court, SE20

Approximate Gross Internal Area
75.6 sq m / 814 sq ft



Second Floor

Copyright www.pedderproperty.com © 2025
These plans are for representation purposes only as defined by RICS - Code of Measuring Practice. Not drawn to Scale. Windows and door openings are approximate. Please check all dimensions, shapes and compass bearings before making any decisions reliant upon them.



Pedder Property Ltd trading as Pedder for themselves and for the vendor/landlord of this property whose agents they are, give notice that (1) these particulars do not constitute any part of an offer or contract, (2) all statements contained within these particulars are made without responsibility on the part of Pedder or the vendor/landlord, (3) whilst made in good faith, none of the statements contained within these particulars are to be relied upon as a statement of representation or fact, (4) any intending purchaser/tenant must satisfy him/herself by inspection or otherwise as to the correctness of each of the statements contained within these particulars, (5) the vendor/landlord does not make or give either Pedder or any person in their employment any authority to make or give representation or warranty whatsoever in relation to this property.