



Gipsy Road, SE27 | £600,000

020 8702 9333

[crystalpalace@pedderproperty.com](mailto:crystalpalace@pedderproperty.com)

**pedder**  
We live local





# In General

- Edwardian terrace house
- Popular location
- No onward chain
- Sunny rear garden
- Period features
- Two bathrooms

# In Detail

A characterful two / three bedroom Edwardian terrace house conveniently placed for Gipsy Hill and West Norwood rail links, available for sale with no onward chain.

The property has been in family ownership since it was built in the early 1900's and offers the opportunity to remodel (STP) and personalise as desired. This blank canvas is arranged over two floors and comprises of a generous sized reception room, kitchen and bathroom downstairs with two double bedrooms, a smaller study room, and additional bathroom above. Externally there is a low maintenance rear garden with a sunny southerly aspect. Set in an unspoilt terrace, notable points include natural slate roof and wooden sash windows, with feature fireplaces internally.

Gipsy Road is positioned between West Norwood, Crystal Palace, and Dulwich, and is convenient for nearby local shops together with others in nearby West Norwood & West Dulwich. Also, the vibrant Crystal Palace Triangle and Norwood Park.

EPC: D | Council Tax Band: D

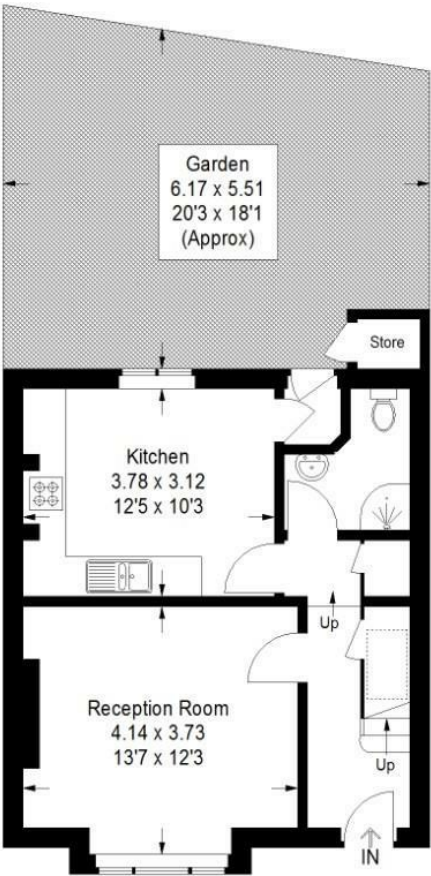




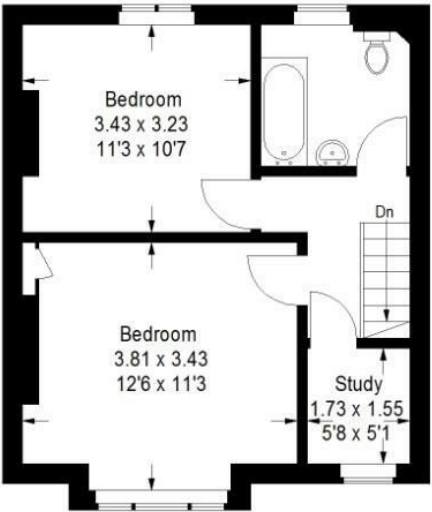
# Floorplan

## Gipsy Road, SE27

Approximate Gross Internal Area  
(Excluding Store)  
79.9 sq m / 860 sq ft



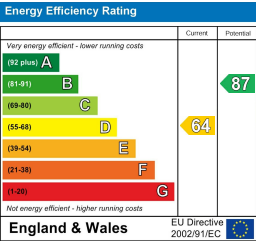
Reduced headroom  
below 1.5 m / 5'0



Ground Floor

First Floor

Copyright www.pedderproperty.com © 2025  
These plans are for representation purposes only as defined by RICS - Code of Measuring Practice.  
Not drawn to Scale. Windows and door openings are approximate. Please check all dimensions,  
shapes and compass bearings before making any decisions reliant upon them.



Pedder Property Ltd trading as Pedder for themselves and for the vendor/landlord of this property whose agents they are, give notice that (1) these particulars do not constitute any part of an offer or contract, (2) all statements contained within these particulars are made without responsibility on the part of Pedder or the vendor/landlord, (3) whilst made in good faith, none of the statements contained within these particulars are to be relied upon as a statement of representation or fact, (4) any intending purchaser/tenant must satisfy him/herself by inspection or otherwise as to the correctness of each of the statements contained within these particulars, (5) the vendor/landlord does not make or give either Pedder or any person in their employment any authority to make or give representation or warranty whatsoever in relation to this property.