



Dulwich Wood Avenue, SE19 | £3,000 Per Calendar  
Month

020 8702 9333  
[crystalpalace@pedderproperty.com](mailto:crystalpalace@pedderproperty.com)

**pedder**  
We live local



# In General

- Four bedroom family house
- Open plan kitchen
- Drive with garage
- Separate W/C
- Close to transport links
- Close to amenities of central Crystal Palace
- Offered unfurnished
- Available immediately

# In Detail

A splendid four bedroom family house forming part of a quiet cul de sac nearby central Crystal Palace to rent.

This light and bright mid-century property is arranged over two levels and offers an immediately enjoyable accommodation for those seeking a comfortable long-term rental. Highlights include a downstairs W/C, open plan kitchen with dining area, bright reception room with direct access to the rear garden and ample understairs storage. The first floor houses three good sized double bedrooms and a smaller bedroom making it an ideal office or nursery, plus family bathroom with shower above bath.

Externally, there is off street parking to the front and garage (ideal for additional storage).

Bell Meadow, SE19 is a family-orientated location which works well for access to multiple shopping and leisure options at the Triangle, also primarily served by Gipsy Hill, Sydenham Hill and Crystal Palace rail links.

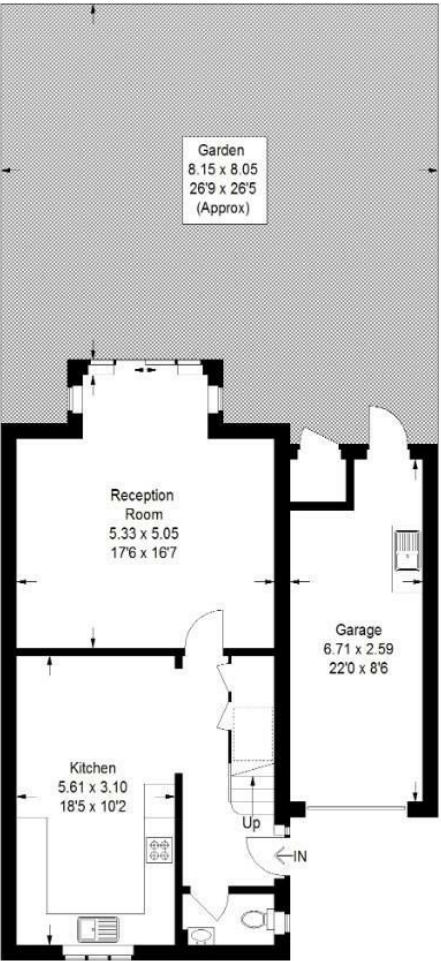
EPC: D | Council Tax: Southwark, F | HD: £692.30 | SD: £3,461.53 | Available immediately | Unfurnished



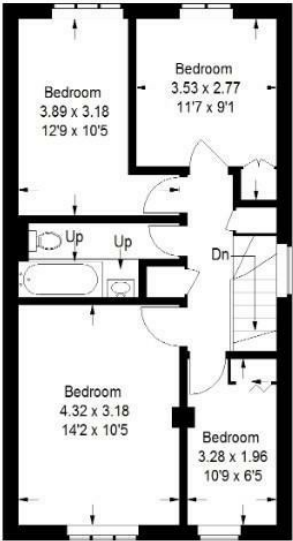
# Floorplan

## Bell Meadow, SE19

Approximate Gross Internal Area  
103.5 sq m / 1114 sq ft  
Garage = 18.0 sq m / 194 sq ft  
Total = 121.5 sq m / 1308 sq ft

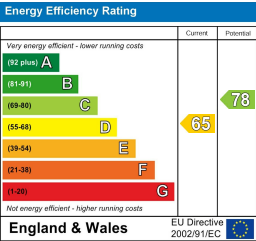


Ground Floor



First Floor

Copyright www.pedderproperty.com © 2025  
These plans are for representation purposes only as defined by RICS - Code of Measuring Practice.  
Not drawn to Scale. Windows and door openings are approximate. Please check all dimensions, shapes and compass bearings before making any decisions reliant upon them.



Pedder Property Ltd trading as Pedder for themselves and for the vendor/landlord of this property whose agents they are, give notice that (1) these particulars do not constitute any part of an offer or contract, (2) all statements contained within these particulars are made without responsibility on the part of Pedder or the vendor/landlord, (3) whilst made in good faith, none of the statements contained within these particulars are to be relied upon as a statement of representation or fact, (4) any intending purchaser/tenant must satisfy him/herself by inspection or otherwise as to the correctness of each of the statements contained within these particulars, (5) the vendor/landlord does not make or give either Pedder or any person in their employment any authority to make or give representation or warranty whatsoever in relation to this property.