



Cypress Road, SE25 | Guide Price £225,000

020 8702 9333

crystalpalace@pedderproperty.com

pedder
We live local



In General

- One bedroom
- Long lease
- No onward chain
- Purpose built
- Juliette balcony
- Allocated parking
- Popular location

In Detail

**** Guide Price £225,000 - £250,000 **** A light, bright and neutrally decorated one bedroom purpose built apartment available for sale with no onward chain, moments from the park and Norwood Lakes.

Located on the first floor, this property has been well maintained by the current owners to offer an ideal first time or investment purchase. Highlights include a light and bright reception room, ample storage, Juliette balcony and long lease.

Externally the property benefits from allocated parking and pleasant communal grounds.

This popular location works well for access to the Triangle at central Crystal Palace and is well served by both Norwood Junction (fast to London Bridge) and Crystal Palace (ELL) rail links.

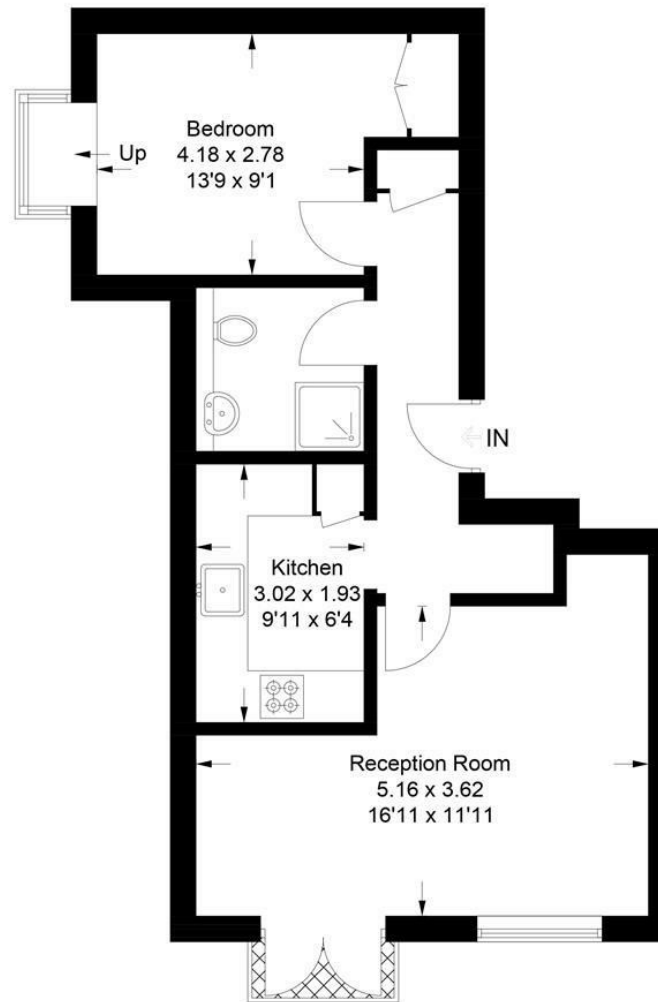
EPC: C | Council Tax Band: B | Lease: 151 years remaining | SC: £2760pa | GR: £60pa | BI: Inc in SC



Floorplan

Cypress Road, SE25

Approximate Gross Internal Area = 44.4 sq m / 478 sq ft



First Floor

Copyright www.pedderproperty.com © 2021

These plans are for representation purposes only as defined by RICS - Code of Measuring Practice. Not drawn to Scale. Windows and door openings are approximate. Please check all dimensions, shapes and compass bearings before making any decisions reliant upon them.

Energy Efficiency Rating		
Very energy efficient - lower running costs	Current	Potential
102 plus) A		
81-101) B		
69-80) C	74	76
55-68) D		
39-54) E		
21-38) F		
1-20) G		
Not energy efficient - higher running costs		
England & Wales	EU Directive 2002/91/EC	

Pedder Property Ltd trading as Pedder for themselves and for the vendor/landlord of this property whose agents they are, give notice that (1) these particulars do not constitute any part of an offer or contract, (2) all statements contained within these particulars are made without responsibility on the part of Pedder or the vendor/landlord, (3) whilst made in good faith, none of the statements contained within these particulars are to be relied upon as a statement of representation or fact, (4) any intending purchaser/tenant must satisfy him/herself by inspection or otherwise as to the correctness of each of the statements contained within these particulars, (5) the vendor/landlord does not make or give either Pedder or any person in their employment any authority to make or give representation or warranty whatsoever in relation to this property.