



Anerley Road, SE20 | £475,000

020 8702 9333

crystalpalace@pedderproperty.com

pedder
We live local



In General

- Two bedroom ground floor maisonette
- Beautifully finished private garden
- Private entrance
- Nearby Crystal Palace park
- Neatly finished throughout
- Modern kitchen and bathroom

In Detail

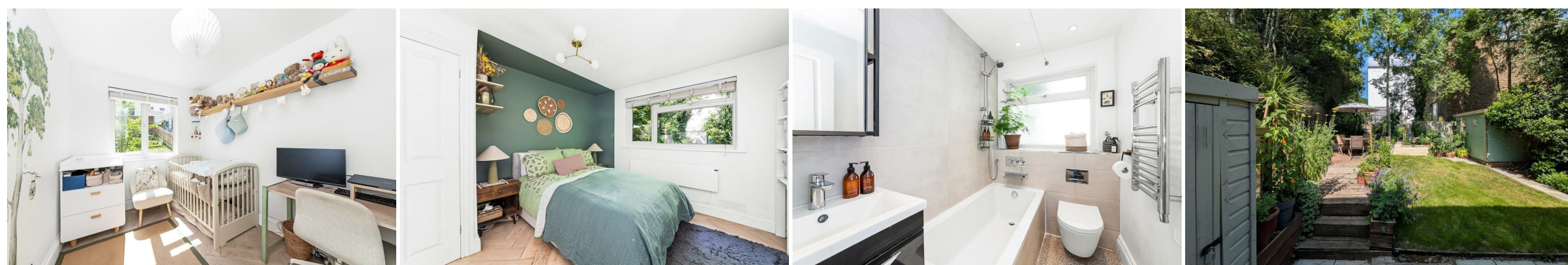
A neatly presented two bedroom ground floor garden flat conveniently positioned nearby Crystal Palace Park and multiple transport links.

This beautifully finished property is accessed via a private entrance and has been upgraded to offer fresh and inviting accommodation, and an immediately enjoyable space. The kitchen has contemporary grey cabinetry with brushed brass fittings, whilst the reception room is brightly decorated and boasts solid wood chevron flooring and a sunny southerly aspect. The larger bedroom is at the rear of the building overlooking the garden, and the bathroom has been fully tiled with a heated towel rail and stainless fixtures.

Much time and effort has been spent in the garden to create a wonderful entertaining and relaxing oasis. There is a separate storage shed / potential home office and a decked seating area - the perfect backdrop for summer barbeques or chilling out with a good book.

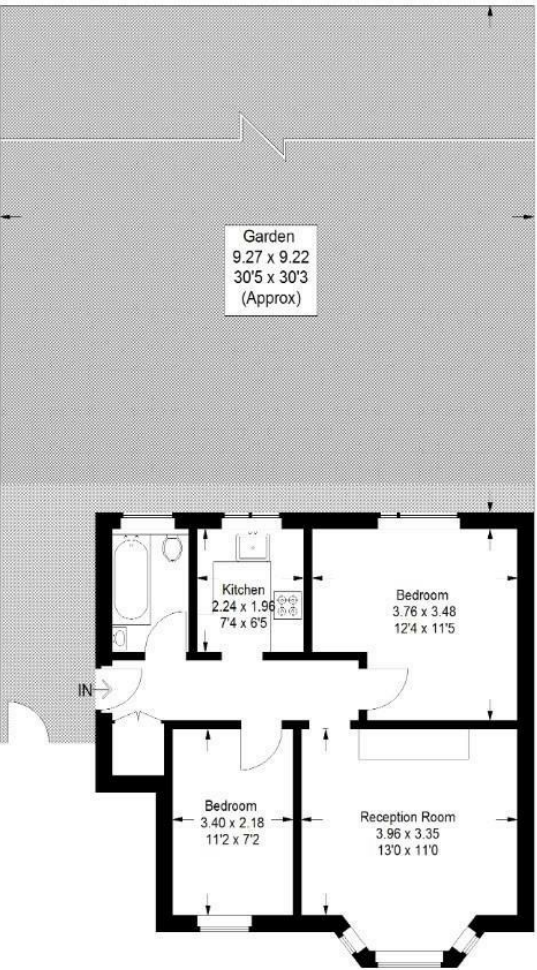
Thicket Terrace is well placed for Crystal Palace, Anerley, and Penge East / West rail links. The amenities of Anerley Parade are moments for away, also central Crystal Palace and parkland.

EPC: | Council Tax Band: | Lease: 144 years remaining | SC: As & When | GR: Peppercorn | BI: £450pa

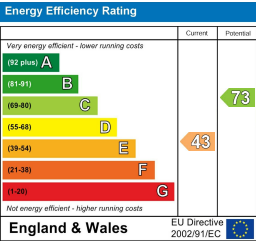


Floorplan

Thicket Terrace, SE20
Approximate Gross Internal Area
50.8 sq m / 547 sq ft



Copyright www.pedderproperty.com © 2025
These plans are for representation purposes only as defined by RICS - Code of Measuring Practice.
Not drawn to Scale. Windows and door openings are approximate. Please check all dimensions, shapes and compass bearings before making any decisions reliant upon them.



Pedder Property Ltd trading as Pedder for themselves and for the vendor/landlord of this property whose agents they are, give notice that (1) these particulars do not constitute any part of an offer or contract, (2) all statements contained within these particulars are made without responsibility on the part of Pedder or the vendor/landlord, (3) whilst made in good faith, none of the statements contained within these particulars are to be relied upon as a statement of representation or fact, (4) any intending purchaser/tenant must satisfy him/herself by inspection or otherwise as to the correctness of each of the statements contained within these particulars, (5) the vendor/landlord does not make or give either Pedder or any person in their employment any authority to make or give representation or warranty whatsoever in relation to this property.