



South Norwood Hill, SE25 | £795,000

020 8702 9333

crystalpalace@pedderproperty.com

pedder
We live local



In General

- Four bedroom detached house
- Secluded private location
- Guest suite with private bathroom
- Outside store room / work shop
- Pleasant elevated views
- Low maintenance garden
- Parking

In Detail

A distinctive and characterful four bedroom detached cottage tucked away on a quiet private lane nearby Norwood Lakes.

This property is one of just three secluded residencies that make up a street scene surrounded by lush greenery. The accommodation is deceptively spacious from the outside and is actually arranged over three floors, which includes a large guest suite with a walk-in wardrobe / dressing room and a recently modernised private bathroom. The entrance level comprises of a separate kitchen with white cabinetry, solid wood surfaces, and a range cooker. Also, a WC and a generous reception room which leads to a sunny conservatory boasting pleasant elevated views. Upstairs there are three bedrooms and a bathroom.

Externally there is a low maintenance rear garden with a pizza oven, side access, and a store room / workshop, whilst there is also parking at the front of the house.

This location is served by Crystal Palace and Norwood Junction rail stations, with Norwood Junction providing an 11 minute fast service to London Bridge and easy travel to Gatwick airport. Parkland is moments away for joggers, dog walkers, and relaxed walks on summer days. If schools are important then the highly regarded Cypress Primary is within proximity, whilst there's an eclectic mix of trendy cafe's, bars, restaurants and leisure options at the Crystal Palace Triangle such as Spinach, Westow House, and the Sparrowhawk to name a few. Also, an Everyman cinema.

EPC: D | Council Tax: D

1

2

3

4

5

6

7

8

9

10

11

12

13

14

15

16

17

18

19

20

21

22

23

24

25

26

27

28

29

30

31

32

33

34

35

36

37

38

39

40

41

42

43

44

45

46

47

48

49

50

51

52

53

54

55

56

57

58

59

60

61

62

63

64

65

66

67

68

69

70

71

72

73

74

75

76

77

78

79

80

81

82

83

84

85

86

87

88

89

90

91

92

93

94

95

96

97

98

99

100

101

102

103

104

105

106

107

108

109

110

111

112

113

114

115

116

117

118

119

120

121

122

123

124

125

126

127

128

129

130

131

132

133

134

135

136

137

138

139

140

141

142

143

144

145

146

147

148

149

150

151

152

153

154

155

156

157

158

159

160

161

162

163

164

165

166

167

168

169

170

171

172

173

174

175

176

177

178

179

180

181

182

183

184

185

186

187

188

189

190

191

192

193

194

195

196

197

198

199

200

201

202

203

204

205

206

207

208

209

210

211

212

213

214

215

216

217

218

219

220

221

222

223

224

225

226

227

228

229

230

231

232

233

234

235

236

237

238

239

240

241

242

243

244

245

246

247

248

249

250

251

252

253

254

255

256

257

258

259

260

261

262

263

264

265

266

267

268

269

270

271

272

273

274

275

276

277

278

279

280

281

282

283

284

285

286

287

288

289

290

291

292

293

294

295

296

297

298

299

300

301

302

303


304

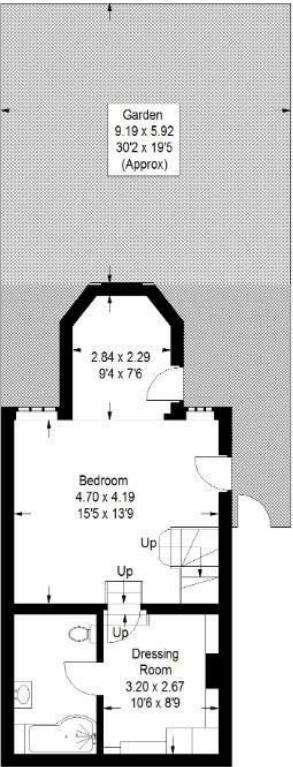
305</

Floorplan

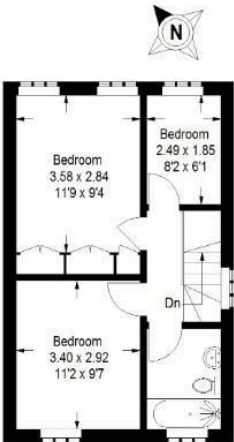
South Norwood Hill, SE25

Approximate Gross Internal Area
120.6 sq m / 1298 sq ft

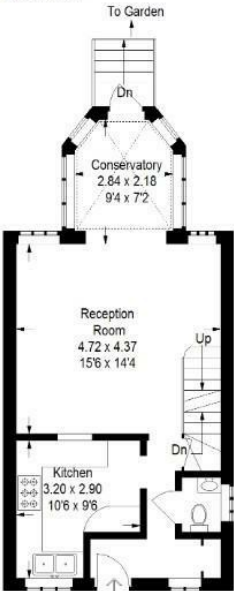
 = Reduced headroom below 1.5 m / 5'0"



Lower Ground Floor

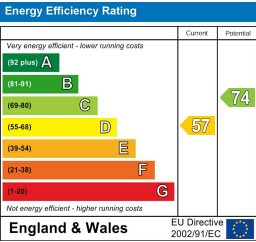


First Floor



Ground Floor

Copyright www.pedderproperty.com © 2025
These plans are for representation purposes only as defined by RICS - Code of Measuring Practice. Not drawn to Scale. Windows and door openings are approximate. Please check all dimensions, shapes and compass bearings before making any decisions reliant upon them.



Pedder Property Ltd trading as Pedder for themselves and for the vendor/landlord of this property whose agents they are, give notice that (1) these particulars do not constitute any part of an offer or contract, (2) all statements contained within these particulars are made without responsibility on the part of Pedder or the vendor/landlord, (3) whilst made in good faith, none of the statements contained within these particulars are to be relied upon as a statement of representation or fact, (4) any intending purchaser/tenant must satisfy him/herself by inspection or otherwise as to the correctness of each of the statements contained within these particulars, (5) the vendor/landlord does not make or give either Pedder or any person in their employment any authority to make or give representation or warranty whatsoever in relation to this property.