



Anerley Park, SE20 | £2,000,000

020 8702 9333

crystalpalace@pedderproperty.com

pedder
We live local



In General

- 4187 sq ft / 389 sq m
- Substantial detached house
- No onward chain
- Plenty of period features
- Highly regarded location
- Garage
- Huge potential
- Convenient location

In Detail

A substantial eight bedroom detached Victorian house forming part of a sought after leafy road and available for sale with no onward chain.

This rarely available property totals a very generous 4187 sq ft / 389 sq m and has been in family ownership for many years, offering flexible accommodation over four floors.

Whilst modernisation and remodelling is required, there are a myriad of options for either a long-term family home or an investment opportunity.

Anerley Park is well placed for rail links at Penge West, Crystal Palace, Penge East & Anerley and which provide connectivity to London Bridge, Victoria (18 minutes from Penge East), Shoreditch, the Jubilee Line (Canada Water), Victoria Line (Brixton) and the Northern Line (Balham).

Just moments from Crystal Palace Park and convenient for access to amenities at Anerley Parade, Penge High Street and central Crystal Palace with its buzzy new bars and restaurants.

EPC: D | Council Tax Band: D



Floorplan

Anerley Park, SE20

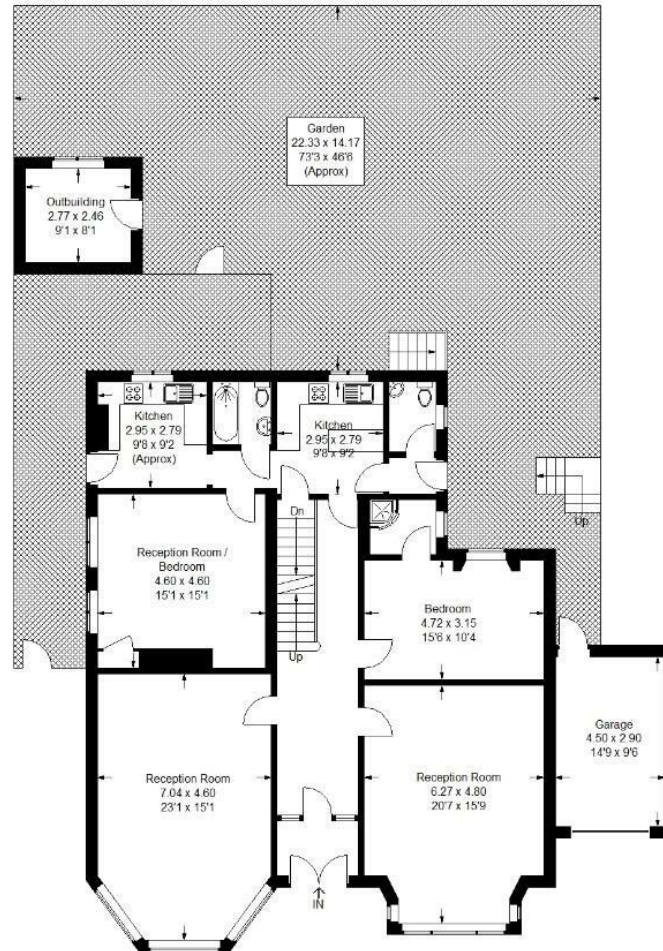
Approximate Gross Internal Area (Excluding Eaves)

368.4 sq m / 3965 sq ft

Garage = 13.4 sq m / 144 sq ft

Outbuilding = 7.2 sq m / 78 sq ft

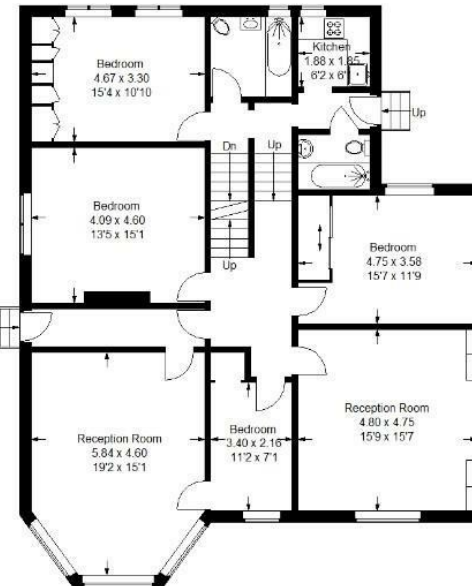
Total = 389.0 sq m / 4187 sq ft



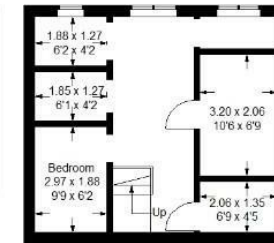
Ground Floor



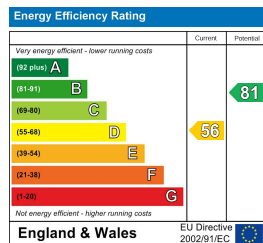
Second Floor



First Floor



Lower Ground Floor



Copyright www.pedderproperty.com © 2025

These plans are for representation purposes only as defined by RICS - Code of Measuring Practice. Not drawn to Scale. Windows and door openings are approximate. Please check all dimensions, shapes and compass bearings before making any decisions reliant upon them.

Pedder Property Ltd trading as Pedder for themselves and for the vendor/landlord of this property whose agents they are, give notice that (1) these particulars do not constitute any part of an offer or contract, (2) all statements contained within these particulars are made without responsibility on the part of Pedder or the vendor/landlord, (3) whilst made in good faith, none of the statements contained within these particulars are to be relied upon as a statement of representation or fact, (4) any intending purchaser/tenant must satisfy him/herself by inspection or otherwise as to the correctness of each of the statements contained within these particulars, (5) the vendor/landlord does not make or give either Pedder or any person in their employment any authority to make or give representation or warranty whatsoever in relation to this property.