



Ridgemount Close, SE20 | £1,800 Per Calendar
Month

020 8702 9333
crystalpalace@pedderproperty.com





In General

- Split-level maisonette
- Three bedrooms
- Separate kitchen
- Private garden
- Unfurnished
- Available Now
- First floor

In Detail

A split-level three bedroom first floor maisonette with private garden in Anerley to rent.

Finished to a good standard throughout and comprising cosy reception room, separate kitchen and two bedrooms on the first floor, whilst the third bedroom is on the second floor (Top). Complete with small utility cupboard, wood flooring, double glazed windows, gas central heating, ample storage throughout and a private garden to the rear via side access downstairs.

Ridgemount Close, SE20 is ideally positioned just off Anerley Park offering easy access to the transport links of Penge West, Penge East and Crystal Palace train stations, as are the local bus routes into the surrounding area and beyond.

The local amenities and shops of Penge High Street and the ever-popular Triangle are close by also, as is the iconic Crystal Palace Park.

The ideal rental for a couple or small family.

EPC: D | Council Tax: Band C | Offered Unfurnished | Available Now | HD: £415.38 | SD: £2,076.92



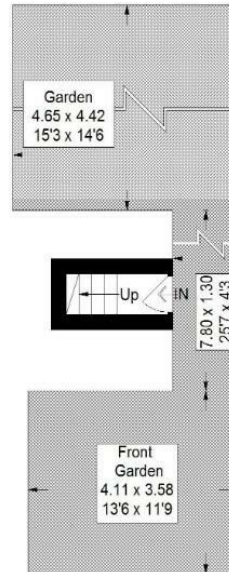
Floorplan

Ridgemoor Close, SE20

Approximate Gross Internal Area
 Ground Floor = 1.6 sq m / 17 sq ft
 First Floor = 53.7 sq m / 578 sq ft
 Second Floor (Excluding Eaves)
 18.0 sq m / 194 sq ft
 Total = 73.3 sq m / 789 sq ft



Second Floor



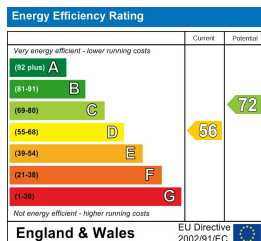
First Floor

Ground Floor

= Reduced headroom below 1.5 m / 5'0"

Copyright www.pedderproperty.com © 2018

These plans are for representation purposes only as defined by RICS - Code of Measuring Practice. Not drawn to Scale. Windows and door openings are approximate. Please check all dimensions, shapes and compass bearings before making any decisions reliant upon them.



Pedder Property Ltd trading as Pedder for themselves and for the vendor/landlord of this property whose agents they are, give notice that (1) these particulars do not constitute any part of an offer or contract, (2) all statements contained within these particulars are made without responsibility on the part of Pedder or the vendor/landlord, (3) whilst made in good faith, none of the statements contained within these particulars are to be relied upon as a statement of representation or fact, (4) any intending purchaser/tenant must satisfy him/herself by inspection or otherwise as to the correctness of each of the statements contained within these particulars, (5) the vendor/landlord does not make or give either Pedder or any person in their employment any authority to make or give representation or warranty whatsoever in relation to this property.