



Harold Road, SE19 | Offers In Excess Of £385,000

020 8702 9333

crystalpalace@pedderproperty.com

pedder
We live local



In General

- 875 sq ft / 81.3 sq m ground floor
- Large private cellar
- High ceilings and period charm
- Bright bay-fronted reception room
- Modern kitchen with appliances
- Freshly painted, refurbished windows
- Mature front garden space
- Walk to the Triangle, station and parks

In Detail

This generously proportioned one-bedroom ground floor flat is set within a charming Victorian building of just four properties, on a leafy and highly sought-after residential road moments from central Crystal Palace.

Offering 875 sq ft of space that is packed with character, the flat features high ceilings, stained glass, decorative coving, and stripped wood floors. The bright and airy 19'5" reception room boasts large shuttered windows with lovely views of the mature communal garden - perfect for soaking up the sun or unwinding outdoors.

Recently repainted and with refurbished windows (Feb 2024), the flat is move-in ready. The modern, separate kitchen is equipped with integrated appliances and an induction hob. A large private cellar offers excellent additional space for storage, a home gym, or creative use. A new boiler was also installed in October 2023.

Just a short stroll from Gipsy Hill Station, two lovely parks, and the vibrant Crystal Palace Triangle, this share-of-freehold home offers a rare blend of period charm, space, and lifestyle convenience.

Offered with no onward chain.

Additional Info:

EPC Rating: D | Council Tax Band: C | Service Charge: £80 pcm | Lease: 989 years remaining | Building Insurance: £900



Floorplan

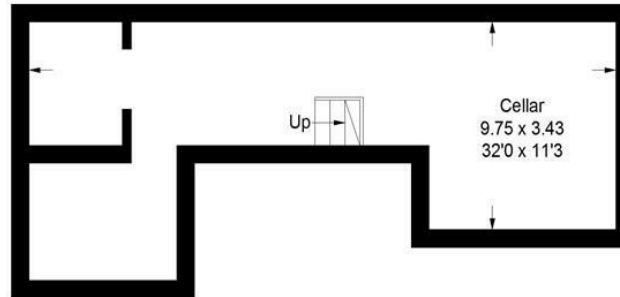
Harold Road, SE19

Approximate Gross Internal Area

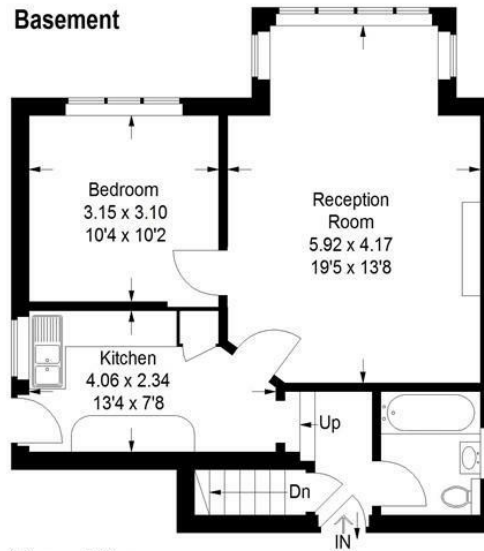
Basement = 29.8 sq m / 321 sq ft

Ground Floor = 51.5 sq m / 554 sq ft

Total = 81.3 sq m / 875 sq ft



Basement

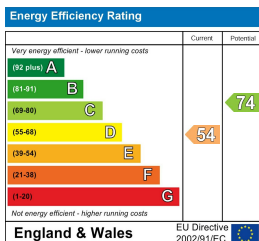


Ground Floor

Copyright www.pedderproperty.com © 2020

These plans are for representation purposes only as defined by RICS - Code of Measuring Practice. Not drawn to Scale. Windows and door openings are approximate.

Please check all dimensions, shapes and compass bearings before making any decisions reliant upon them.



Pedder Property Ltd trading as Pedder for themselves and for the vendor/landlord of this property whose agents they are, give notice that (1) these particulars do not constitute any part of an offer or contract, (2) all statements contained within these particulars are made without responsibility on the part of Pedder or the vendor/landlord, (3) whilst made in good faith, none of the statements contained within these particulars are to be relied upon as a statement of representation or fact, (4) any intending purchaser/tenant must satisfy him/herself by inspection or otherwise as to the correctness of each of the statements contained within these particulars, (5) the vendor/landlord does not make or give either Pedder or any person in their employment any authority to make or give representation or warranty whatsoever in relation to this property.