



Rama Lane, SE19 | £950,000

02087029333

[crystalpalace@pedderproperty.com](mailto:crystalpalace@pedderproperty.com)

**pedder**  
We live local







# In General

- Four bedroom semi-detached house
- Off street parking and a garage
- 1589 sq ft / 147.6 sq m
- En suite shower room
- Quiet private road
- Central location
- Low maintenance rear garden
- 19ft kitchen / diner with a breakfast bar

# In Detail

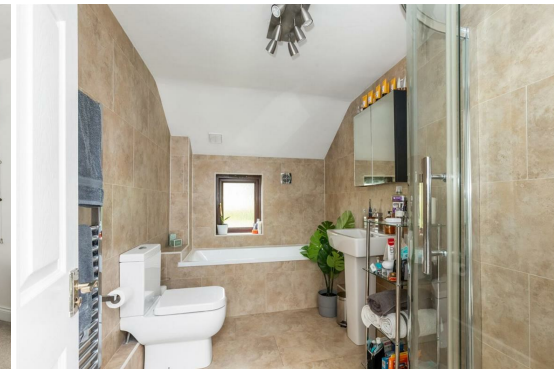
A very neatly presented four bedroom semi-detached house tucked away on a small private road in the heart of Crystal Palace.

This elegantly finished accommodation is arranged over four levels and totals 1589 sq ft / 147.6 sq m of flexible living space which would work well for a young or growing family, or those who enjoy room to entertain. The entrance level provides access to a 17ft integrated garage which offers ample storage space, leading upstairs to a light and bright dual aspect reception room and the fourth bedroom / study (with a WC). Above is an en suite bedroom and a contemporary 19ft kitchen / diner which is the heart of the property with integrated appliances, a sit-up breakfast bar, quartz surfaces, and a door to outside. The top floor houses two further double bedrooms (one with fitted wardrobes) and a four piece bathroom with a separate walk-in shower.

Externally there is a low maintenance leafy 37ft rear garden with a sunny southerly aspect and a decked seating area with pleasant elevated views. Also, off street parking at the front of the building.

Rama Lane is accessed via Cintra Park and is just moments from an array of shopping and leisure options at the vibrant Crystal Palace Triangle, including an Everyman cinema and a variety of independent boutiques and cafes. The weekly food market on Haynes Lane is nearby and is a great place to check out quality offerings from farmers and locals alike. If transport links are important, there is ease of access to both Gipsy Hill and Crystal Palace stations, also the historic Crystal Palace park.

EPC: C | Council tax band: F



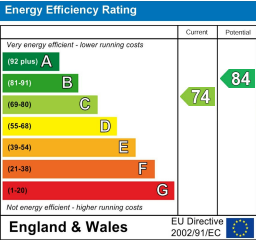
# Floorplan

Rama Lane, SE19

Approximate Gross Internal Area  
(Including Garage)  
147.6 sq m / 1589 sq ft



Copyright www.pedderproperty.com © 2025  
These plans are for representation purposes only as defined by RICS - Code of Measuring Practice.  
Not drawn to Scale. Windows and door openings are approximate. Please check all dimensions,  
shapes and compass bearings before making any decisions reliant upon them.



Pedder Property Ltd trading as Pedder for themselves and for the vendor/landlord of this property whose agents they are, give notice that (1) these particulars do not constitute any part of an offer or contract, (2) all statements contained within these particulars are made without responsibility on the part of Pedder or the vendor/landlord, (3) whilst made in good faith, none of the statements contained within these particulars are to be relied upon as a statement of representation or fact, (4) any intending purchaser/tenant must satisfy him/herself by inspection or otherwise as to the correctness of each of the statements contained within these particulars, (5) the vendor/landlord does not make or give either Pedder or any person in their employment any authority to make or give representation or warranty whatsoever in relation to this property.