



Hamlet Road, SE19 | £1,650 Per Calendar Month

02087029333

[crystalpalace@pedderproperty.com](mailto:crystalpalace@pedderproperty.com)

**pedder**  
We live local

# In General

- Top floor conversion
- Double bedroom plus study room
- Great condition
- Close to Crystal Palace train station
- Close to local amenities
- Offered furnished
- Available July
- Ideal for single or professional couple

# In Detail

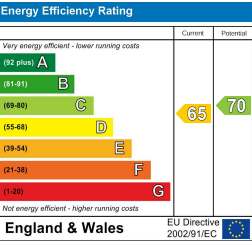
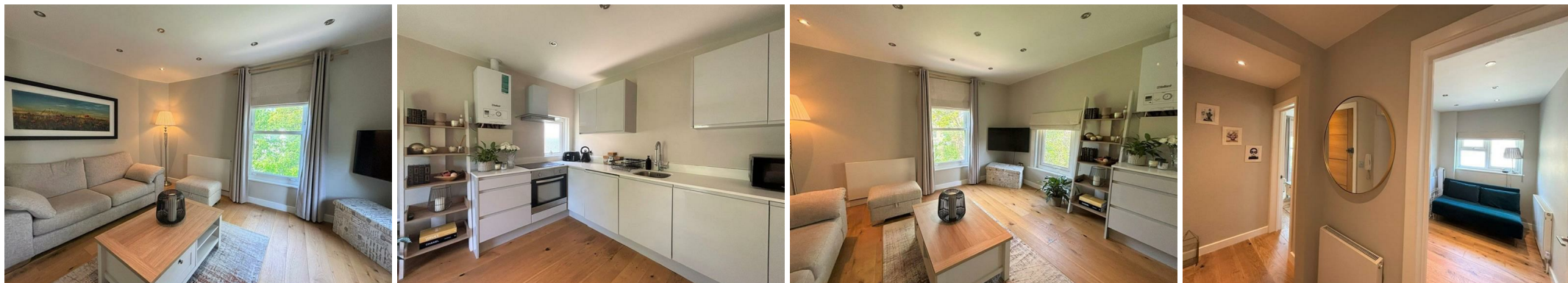
A well presented top floor two bedroom apartment positioned on a much sought after road moments from Crystal Palace station.

Finished to a high standard throughout and offering ample natural light throughout with highlights including open plan kitchen / living area, double bedroom, plus office/study room which is ideal for those working from home and a modern bathroom with shower above bath.

Hamlet Road, SE19 is a popular residential street enabling easy access to the vibrant Triangle, transport links of Crystal Palace train station, leisure facilities of the park, plus the local amenities of Anerley Road including coffee shops, cafes and bakery.

This property is ideal for a single professional or couple seeking a modern, conveniently located home.

EPC: D | Council Tax Band: B | Furnished | Available July | HD: £380.76 | SD: £1,903.84



Pedder Property Ltd trading as Pedder for themselves and for the vendor/landlord of this property whose agents they are, give notice that (1) these particulars do not constitute any part of an offer or contract, (2) all statements contained within these particulars are made without responsibility on the part of Pedder or the vendor/landlord, (3) whilst made in good faith, none of the statements contained within these particulars are to be relied upon as a statement of representation or fact, (4) any intending purchaser/tenant must satisfy him/herself by inspection or otherwise as to the correctness of each of the statements contained within these particulars, (5) the vendor/landlord does not make or give either Pedder or any person in their employment any authority to make or give representation or warranty whatsoever in relation to this property.