



Auckland Rise, SE19 | Guide Price £350,000

020 8702 9333

crystalpalace@pedderproperty.com

pedder
We live local



In General

- Two bedroom purpose built apartment
- Fully upgraded throughout
- An exceptionally long lease
- Contemporary kitchen with bar
- Two double bedrooms
- Wooden flooring throughout

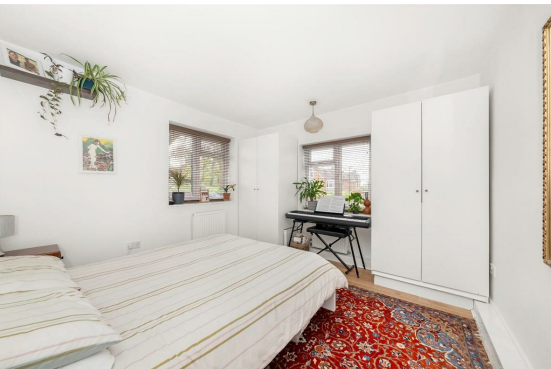
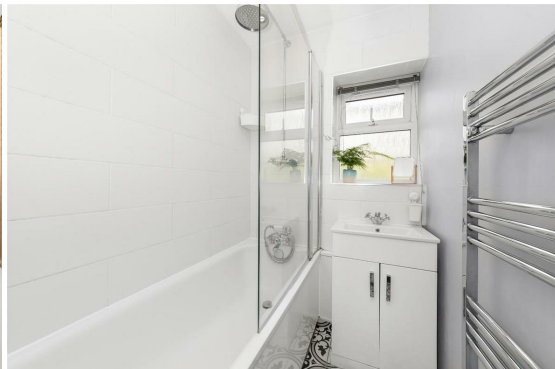
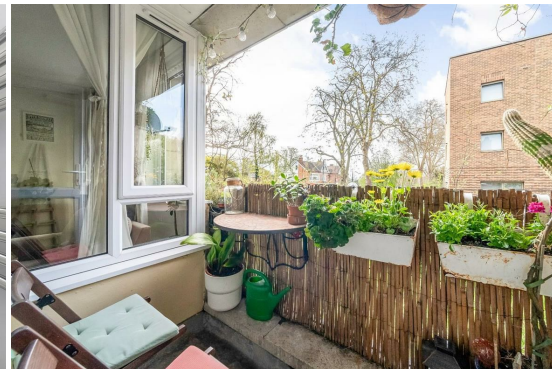
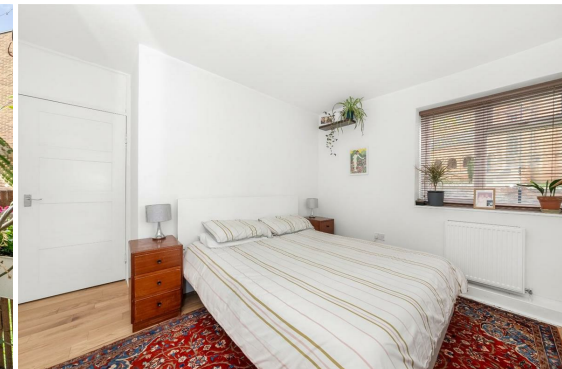
In Detail

Guide Price £350,000 - £375,000 A light, bright, and smartly presented two double bedroom purpose built apartment in Crystal Palace.

This generously proportioned property has been completely upgraded to offer a comfortable and enjoyable new home. The reception room extended to 26ft and is socially open to a contemporary white high-gloss kitchen with solid wood countertops and a seating area. There is also direct access to a covered balcony with a sunny southerly aspect. Both bedrooms are doubles, with the larger enjoying a dual aspect and fitted wardrobe storage. Other notable features include a recently upgraded bathroom with a rainfall shower and heated towel rail, a separate WC, tasteful wooden flooring throughout, communal grounds, and an exceptionally long lease.

This location works well for access the shopping and leisure amenities at the Triangle as well nearby parkland, and the option of both Crystal Palace and Norwood Junction rail links.

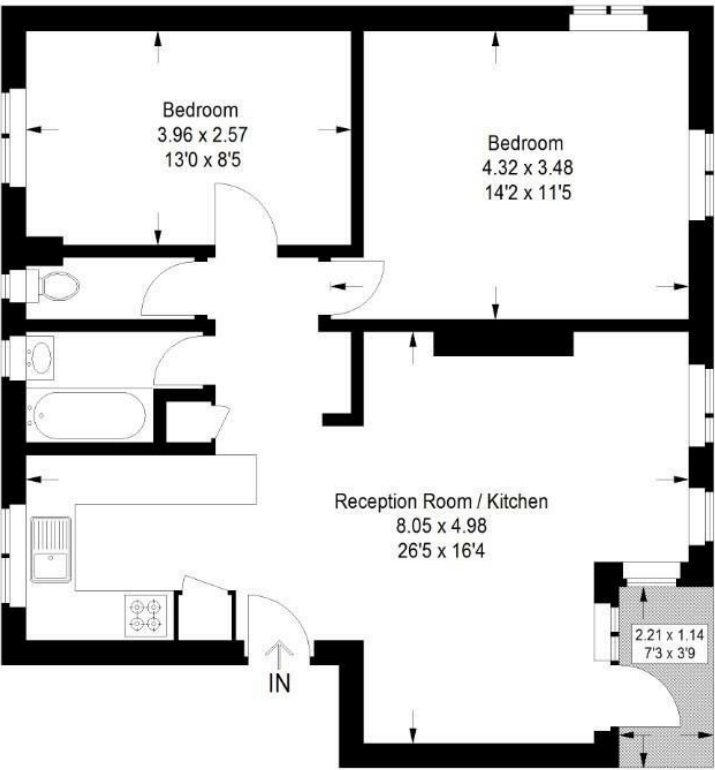
EPC: C | Council Tax Band: C | Lease: 173 years remaining | SC: £678.89pa | GR: £10 pa | BI: £314.14



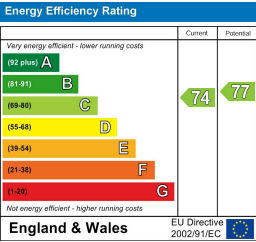
Floorplan

Auckland Rise, SE19

Approximate Gross Internal Area
62.3 sq m / 671 sq ft



Copyright www.pedderproperty.com © 2025
These plans are for representation purposes only as defined by RICS - Code of Measuring Practice. Not drawn to Scale. Windows and door openings are approximate. Please check all dimensions, shapes and compass bearings before making any decisions reliant upon them.



Pedder Property Ltd trading as Pedder for themselves and for the vendor/landlord of this property whose agents they are, give notice that (1) these particulars do not constitute any part of an offer or contract, (2) all statements contained within these particulars are made without responsibility on the part of Pedder or the vendor/landlord, (3) whilst made in good faith, none of the statements contained within these particulars are to be relied upon as a statement of representation or fact, (4) any intending purchaser/tenant must satisfy him/herself by inspection or otherwise as to the correctness of each of the statements contained within these particulars, (5) the vendor/landlord does not make or give either Pedder or any person in their employment any authority to make or give representation or warranty whatsoever in relation to this property.