



Farquhar Road, SE19 | £470,000

020 8702 9333

crystalpalace@pedderproperty.com

pedder
We live local



In General

- First floor mid-century build
- Prestigious Dulwich Estate
- Well placed for transport links
- Garage
- Original features
- Lift

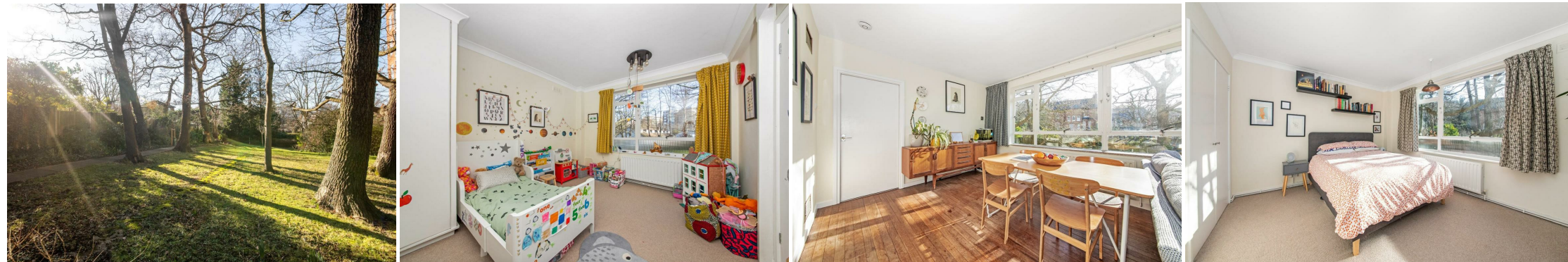
In Detail

A light, bright and spacious two double bedroom first floor apartment forming a mid-century build on the prestigious Dulwich Estate.

The L-shaped reception room extends to 21ft and benefits from a sunny south-westerly aspect, and includes original solid wood flooring and fireplace. Both bedrooms have fitted wardrobes, whilst the kitchen is separate with ample storage and work space. Further points to note include a long lease, a lift, a garage, and immaculately maintained communal grounds.

This location enables ease of access to Gipsy Hill, Crystal Palace or Sydenham Hill rail links, whilst leisure and shopping options are also nearby at the Crystal Palace Triangle, Gipsy Parade or Dulwich Village.

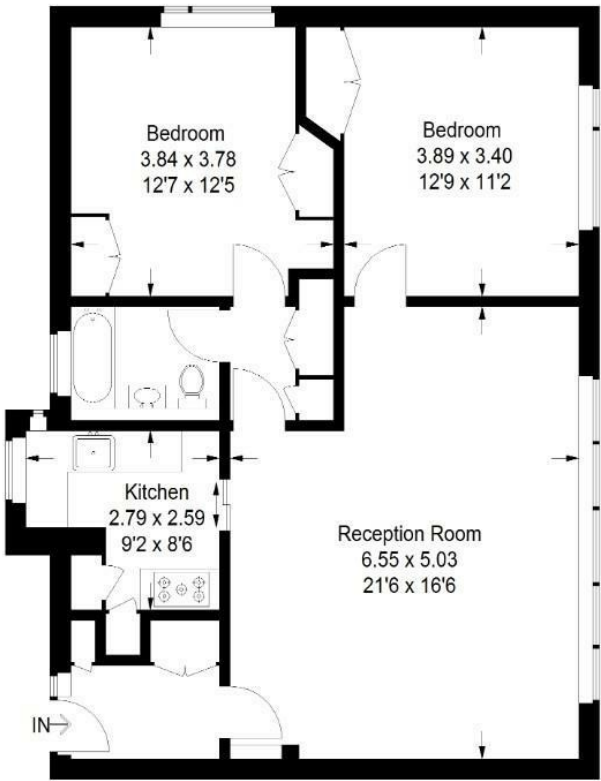
EPC: D | Council Tax Band: C | Lease: 121 years remaining | SC: £1,800.00 | GR: £0 | BI: £710



Floorplan

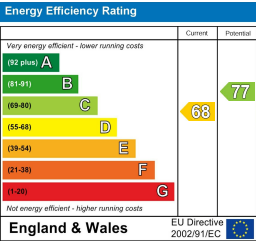
Lowood Court, SE19

Approximate Gross Internal Area
79.0 sq m / 850 sq ft



First Floor

Copyright www.pedderproperty.com © 2025
These plans are for representation purposes only as defined by RICS - Code of Measuring Practice. Not drawn to Scale.
Windows and door openings are approximate. Please check all dimensions, shapes and compass bearings before making any decisions reliant upon them.



Pedder Property Ltd trading as Pedder for themselves and for the vendor/landlord of this property whose agents they are, give notice that (1) these particulars do not constitute any part of an offer or contract, (2) all statements contained within these particulars are made without responsibility on the part of Pedder or the vendor/landlord, (3) whilst made in good faith, none of the statements contained within these particulars are to be relied upon as a statement of representation or fact, (4) any intending purchaser/tenant must satisfy him/herself by inspection or otherwise as to the correctness of each of the statements contained within these particulars, (5) the vendor/landlord does not make or give either Pedder or any person in their employment any authority to make or give representation or warranty whatsoever in relation to this property.