

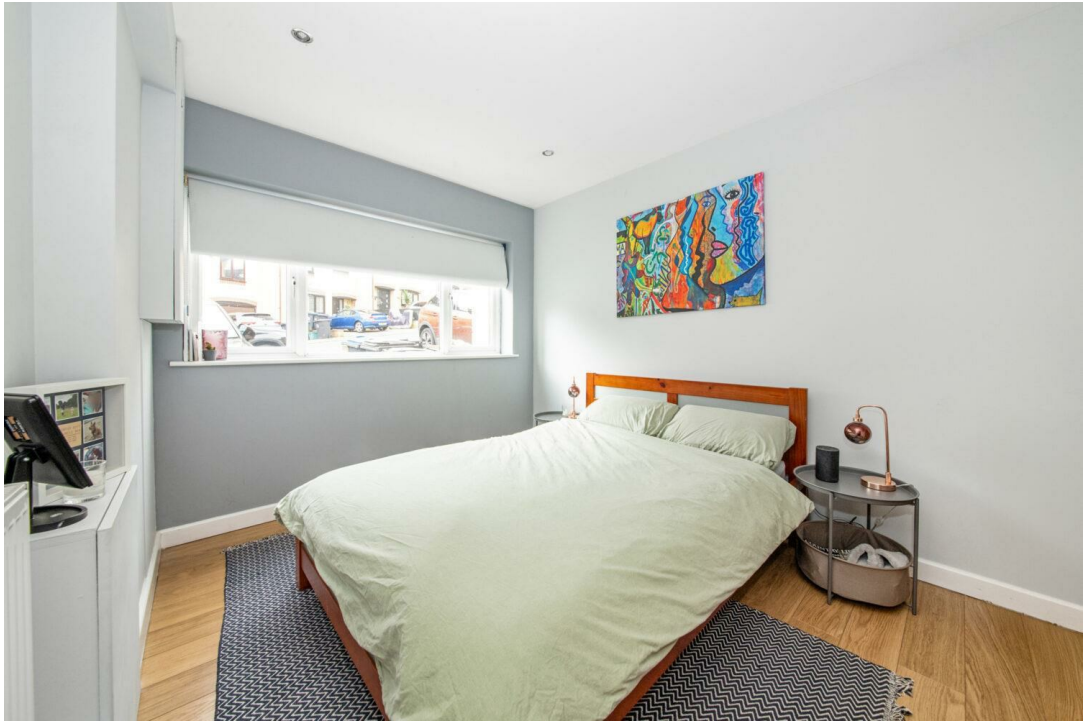


Tree View Close, SE19 | Offers Over £725,000

02087029333

crystalpalace@pedderproperty.com

pedder
We live local



In General

- Four bedroom townhouse
- Additional shower room
- Quiet cul de sac
- Low maintenance garden
- Utility room
- Kitchen / diner
- No onward chain
- Off street parking

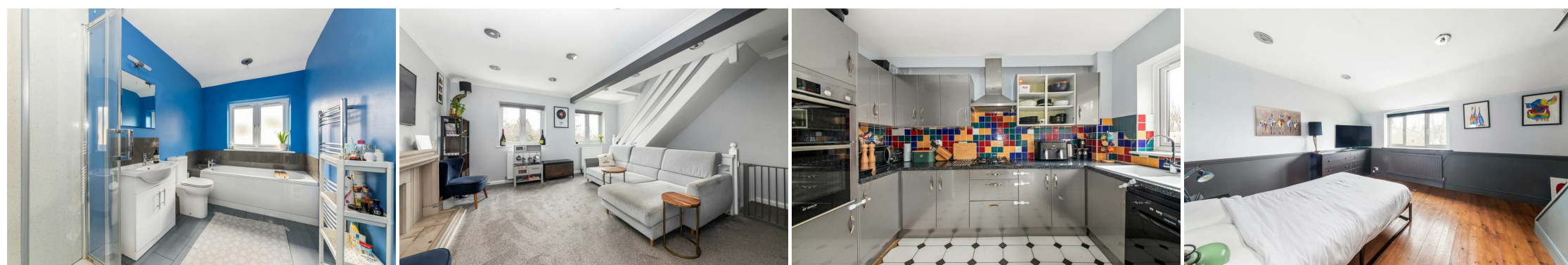
In Detail

A spacious four bedroom, two bathroom mid-terrace townhouse forming a quiet cul de sac in Crystal Palace, available for sale with no onward chain.

The accommodation is arranged over three floors, plus a bonus room which is currently used as a walk-in wardrobe. The entrance level comprises of two double bedrooms, a WC, a shower room, and a utility room. This floor is ideal for guests and a home working study, separated from the main living area. The first floor is light and bright with a 15ft reception room leading to a kitchen / diner with a Juliette balcony. The top floor houses two further double bedrooms and a large four-piece bathroom with a separate walk-in shower. Externally there is a 45ft low maintenance garden with rear access and off street parking at the front of the property. Further notable points include stripped wood flooring and an abundance of fitted storage.

Tree View Close is primarily served by Crystal Palace and Gipsy Hill rail links, and also offers proximity to popular Cypress Primary School, Westow Park, Norwood Lake and grounds, and the vibrant Crystal Palace Triangle.

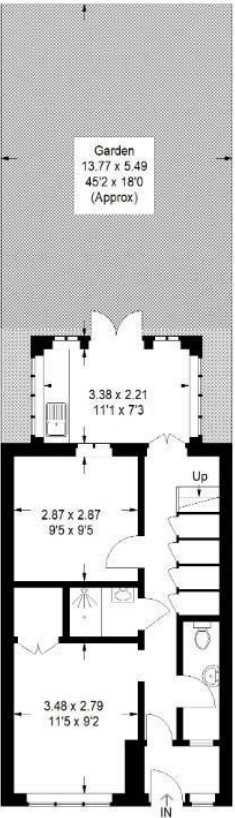
EPC : D | Council Tax Band : E



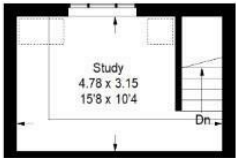
Floorplan

Tree View Close, SE19

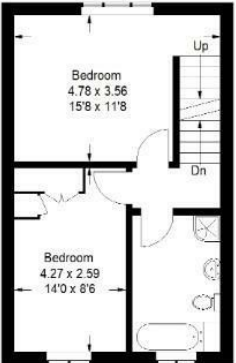
Approximate Gross Internal Area
137.4 sq m / 1479 sq ft



Ground Floor



Third Floor

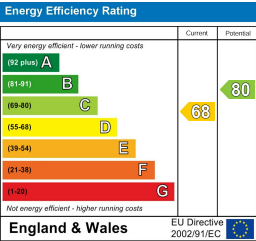


Second Floor



First Floor

Copyright www.pedderproperty.com © 2025
These plans are for representation purposes only as defined by RICS - Code of Measuring Practice.
Not drawn to Scale. Windows and door openings are approximate. Please check all dimensions,
shapes and compass bearings before making any decisions reliant upon them.



Pedder Property Ltd trading as Pedder for themselves and for the vendor/landlord of this property whose agents they are, give notice that (1) these particulars do not constitute any part of an offer or contract, (2) all statements contained within these particulars are made without responsibility on the part of Pedder or the vendor/landlord, (3) whilst made in good faith, none of the statements contained within these particulars are to be relied upon as a statement of representation or fact, (4) any intending purchaser/tenant must satisfy him/herself by inspection or otherwise as to the correctness of each of the statements contained within these particulars, (5) the vendor/landlord does not make or give either Pedder or any person in their employment any authority to make or give representation or warranty whatsoever in relation to this property.