



Lymer Avenue, SE19 | £500,000

020 8702 9333

crystalpalace@pedderproperty.com

pedder
We live local



In General

- Three bedroom apartment
- Two garages
- Long lease
- No onward chain
- Original features
- Popular location
- Lift
- Residents parking

In Detail

A rarely available three bedroom apartment forming part of the popular Dulwich Estate development on the borders of Dulwich and Crystal Palace.

Positioned on the second floor, the property has been in family ownership for many years and requires cosmetic modernisation to suit. There are original features such as solid wood flooring and a mid-century design fireplace. Also, a bright square bay in the reception room and fitted storage throughout. Unusually, there are two garages with this property. Whilst a long lease, gas central heating (instead of original warm air), a lift, and meticulously maintained common grounds make for an attractive market offering.

This location enables ease of access to Gipsy Hill, Crystal Palace, or Sydenham Hill rail links, as well as key bus routes to central London. There are an abundance of leisure and shopping options also nearby at the Crystal Palace Triangle, Gipsy Parade, or Dulwich Village.

No onward chain.

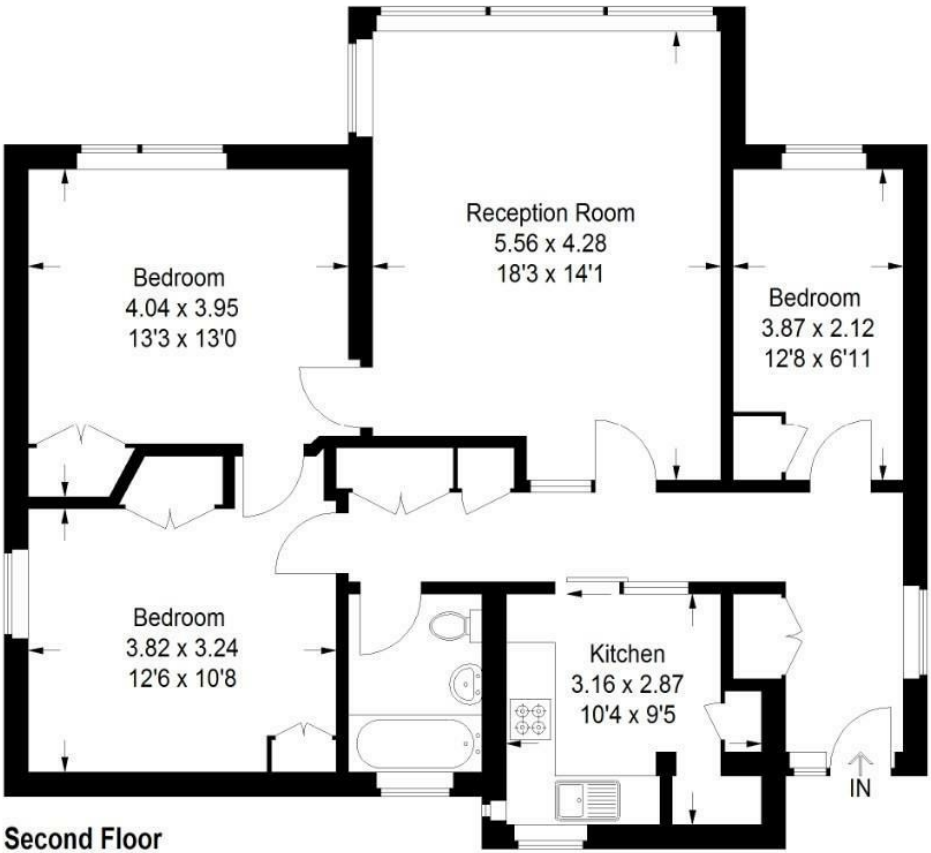
EPC: C | Council Tax Band: C | Lease: 124 years remaining | SC: TBC | GR: TBC | BI: TBC



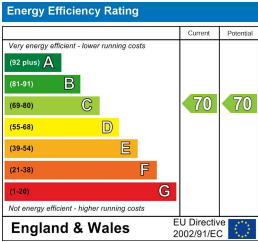
Floorplan

Raleigh Court, SE19

Approximate Gross Internal Area
89.6 sq m / 964 sq ft



Copyright www.pedderproperty.com © 2025
These plans are for representation purposes only as defined by RICS - Code of Measuring Practice. Not drawn to Scale. Windows and door openings are approximate. Please check all dimensions, shapes and compass bearings before making any decisions reliant upon them.



Pedder Property Ltd trading as Pedder for themselves and for the vendor/landlord of this property whose agents they are, give notice that (1) these particulars do not constitute any part of an offer or contract, (2) all statements contained within these particulars are made without responsibility on the part of Pedder or the vendor/landlord, (3) whilst made in good faith, none of the statements contained within these particulars are to be relied upon as a statement of representation or fact, (4) any intending purchaser/tenant must satisfy him/herself by inspection or otherwise as to the correctness of each of the statements contained within these particulars, (5) the vendor/landlord does not make or give either Pedder or any person in their employment any authority to make or give representation or warranty whatsoever in relation to this property.