



Anerley Park, SE20 | £1,650 Per Calendar Month

02087029333

crystalpalace@pedderproperty.com

pedder
We live local



In General

- Maisonette / Private entrance
- Two bedrooms
- Private front Garden
- Ground floor
- Close to Penge West train station
- Close to Crystal Palace Park
- Available immediately
- Unfurnished

In Detail

A ground floor two bedroom garden flat which is well placed for multiple transport links in Anerley to rent.

The property comprises contemporary kitchen, separate living room, two double bedrooms and bathroom with shower above bath. Complete with a large private front garden, including a large shed which can accommodate bicycles and other items for storage purposes, and private entrance.

Anerley Park, SE20 is ideally located near Penge West, Penge East, Anerley and Crystal Palace rail links, as well as the iconic Crystal Palace Park and shopping and leisure amenities such as Penge High Street and the Crystal Palace Triangle.

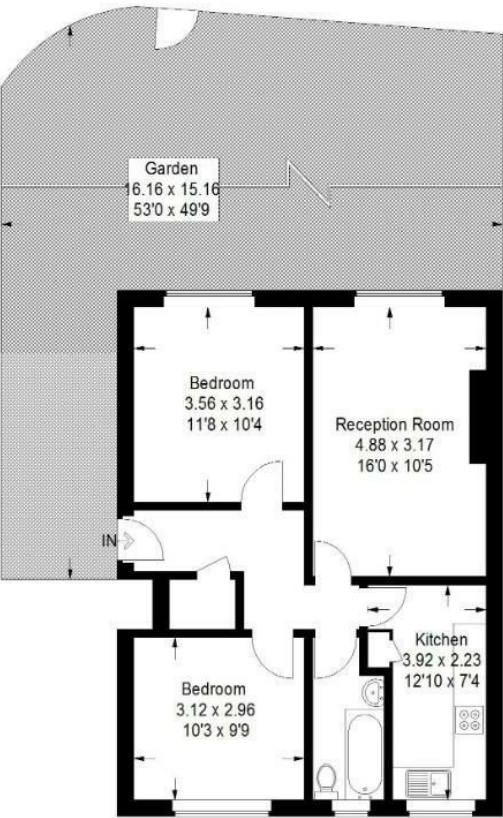
EPC: C | Council Tax Band: C | Offered unfurnished | Available immediately | HD: £307.67 | SD: £1,903.84



Floorplan

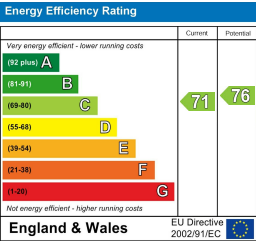
Rosebank, SE20

Approximate Gross Internal Area
56.7 sq m / 610 sq ft



Ground Floor

Copyright www.pedderproperty.com © 2017
These plans are for representation purposes only as defined by RICS - Code of Measuring Practice.
Not drawn to Scale. Windows and door openings are approximate. Please check all dimensions, shapes
and compass bearings before making any decisions reliant upon them.



Pedder Property Ltd trading as Pedder for themselves and for the vendor/landlord of this property whose agents they are, give notice that (1) these particulars do not constitute any part of an offer or contract, (2) all statements contained within these particulars are made without responsibility on the part of Pedder or the vendor/landlord, (3) whilst made in good faith, none of the statements contained within these particulars are to be relied upon as a statement of representation or fact, (4) any intending purchaser/tenant must satisfy him/herself by inspection or otherwise as to the correctness of each of the statements contained within these particulars, (5) the vendor/landlord does not make or give either Pedder or any person in their employment any authority to make or give representation or warranty whatsoever in relation to this property.