



Crown Dale, SE19 | Offers In Excess Of £800,000

02087029333

[crystalpalace@pedderproperty.com](mailto:crystalpalace@pedderproperty.com)

**pedder**  
We live local



# In General

- Four bedroom semi-detached house
- No onward chain
- Large main bedroom with en suite and balcony
- Luxury bathroom
- Off street parking
- Sunny rear garden

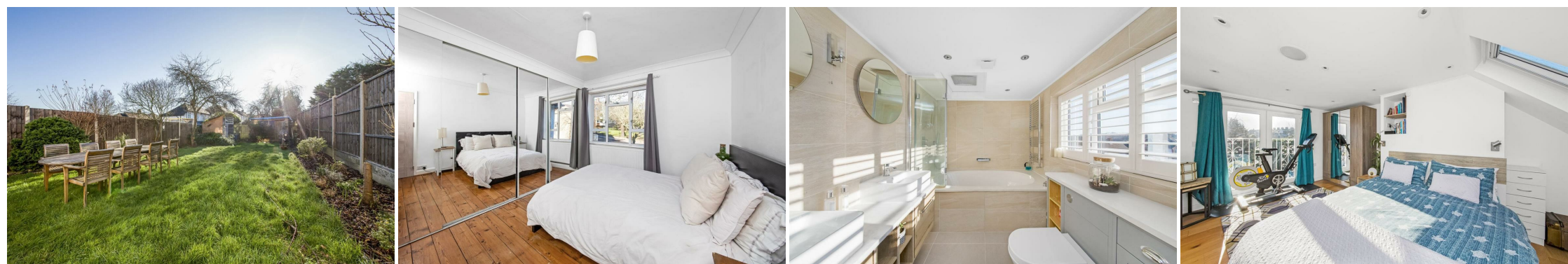
# In Detail

A spacious four bedroom semi-detached house conveniently positioned for local amenities and available for sale in Crown Dale, SE19 with no onward chain.

This well presented property is arranged over three levels and has been remodelled and upgraded to offer a well proportioned and comfortable family home. The ground floor comprises of a 21ft reception room which is socially open plan to a contemporary kitchen with quartz surfaces, integrated appliances, and an island breakfast bar. Also, a downstairs cloakroom. The first floor is three bedrooms and a luxury four piece bathroom with a freestanding tub and a walk-in shower, whilst the top floor houses a light and bright main bedroom with a Juliette balcony and an en suite with a large bath and double vanity sinks. Other notable features include a surround sound speaker system, a 58ft lawned garden with a southerly aspect, and off street parking.

Crown Dale is primarily served by both West Norwood and Gipsy Hill rail links (as well as bus routes along the road) and is within close proximity or Norwood Park and popular schools.

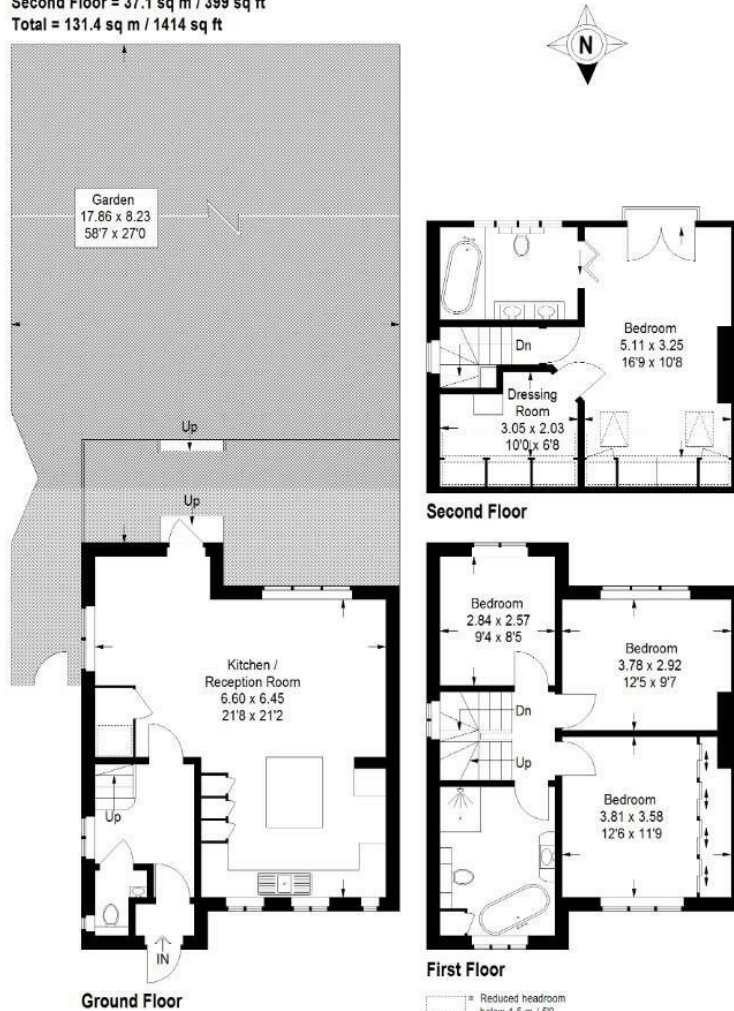
EPC: D | Council Tax Band: D



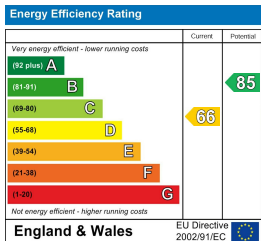
# Floorplan

## Crown Dale SE19

Approximate Gross Internal Area  
 Ground Floor = 47.2 sq m / 508 sq ft  
 First Floor = 47.1 sq m / 507 sq ft  
 Second Floor = 37.1 sq m / 399 sq ft  
 Total = 131.4 sq m / 1414 sq ft



Copyright www.pedderproperty.com © 2022  
 These plans are for representation purposes only as defined by RICS - Code of Measuring Practice.  
 Not drawn to Scale. Windows and door openings are approximate. Please check all dimensions, shapes and compass bearings before making any decisions reliant upon them.



Pedder Property Ltd trading as Pedder for themselves and for the vendor/landlord of this property whose agents they are, give notice that (1) these particulars do not constitute any part of an offer or contract, (2) all statements contained within these particulars are made without responsibility on the part of Pedder or the vendor/landlord, (3) whilst made in good faith, none of the statements contained within these particulars are to be relied upon as a statement of representation or fact, (4) any intending purchaser/tenant must satisfy him/herself by inspection or otherwise as to the correctness of each of the statements contained within these particulars, (5) the vendor/landlord does not make or give either Pedder or any person in their employment any authority to make or give representation or warranty whatsoever in relation to this property.