



Stodart Road, SE20 | £850,000

020 8702 9333

crystalpalace@pedderproperty.com

pedder
We live local



In General

- Three bedroom semi detached house
- Characterful features
- Kitchen/diner
- Four piece bathroom with exposed brick detail
- Quiet residential road
- Summerhouse/home office
- Off street parking

In Detail

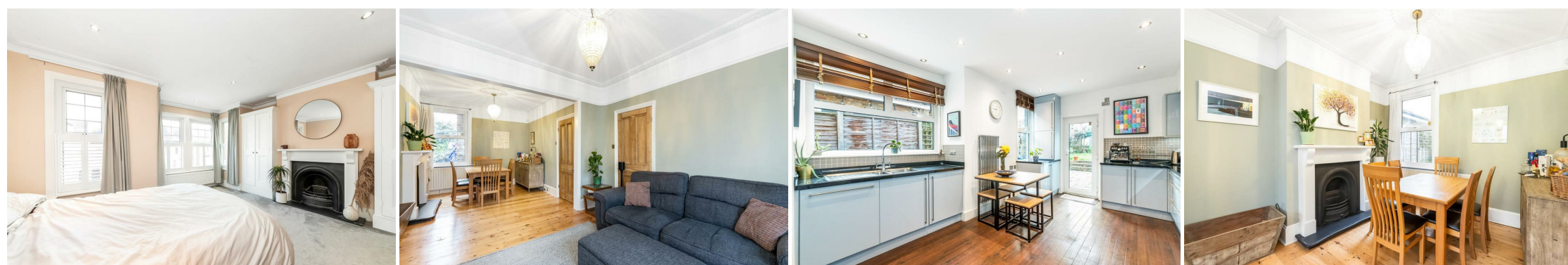
A beautifully finished three double bedroom Victorian semi detached house forming part of a quiet residential road in Penge.

This attractive brick fronted property offers warm and inviting accommodation over two levels and a characterful feel throughout. The ground floor comprises of a 26ft through reception room with two fireplaces (one open), ornate coving, stripped wood flooring, and a shuttered box bay window. Beyond is a spacious kitchen/diner with granite countertops and ample storage - a great space for enjoying a morning coffee overlooking the garden. Upstairs there are three well proportioned bedrooms, the largest extending to 16ft and boasting a feature fireplace and bespoke fitted cabinetry. The bathroom features exposed brickwork, a freestanding bath, and a separate walk-in shower. There is also a separate WC and ample loft space which could lend to conversion (STP) if desired.

Externally there is a low maintenance rear garden with side access and a sunny southerly aspect. Additionally, a summerhouse makes an ideal home office and has power and light, and there is off street parking at the front.

Stodart Road is predominantly made up of Victorian family houses and is conveniently situated for Anerley, Birkbeck, and Penge East/West rail links, as well as Crystal Palace Park, and an array of amenities nearby on the High Street.

EPC: E | Council Tax Band: D



Floorplan

Stodart Road, SE20

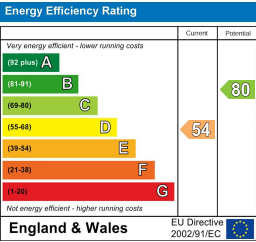
Approximate Gross Internal Area
120.1 sq m / 1293 sq ft
Outbuilding = 7.8 sq m / 84 sq ft
Total = 127.9 sq m / 1377 sq ft



Ground Floor

First Floor

Copyright www.pedderproperty.com © 2025
These plans are for representation purposes only as defined by RICS - Code of Measuring Practice. Not drawn to Scale. Windows and door openings are approximate. Please check all dimensions, shapes and compass bearings before making any decisions reliant upon them.



Pedder Property Ltd trading as Pedder for themselves and for the vendor/landlord of this property whose agents they are, give notice that (1) these particulars do not constitute any part of an offer or contract, (2) all statements contained within these particulars are made without responsibility on the part of Pedder or the vendor/landlord, (3) whilst made in good faith, none of the statements contained within these particulars are to be relied upon as a statement of representation or fact, (4) any intending purchaser/tenant must satisfy him/herself by inspection or otherwise as to the correctness of each of the statements contained within these particulars, (5) the vendor/landlord does not make or give either Pedder or any person in their employment any authority to make or give representation or warranty whatsoever in relation to this property.